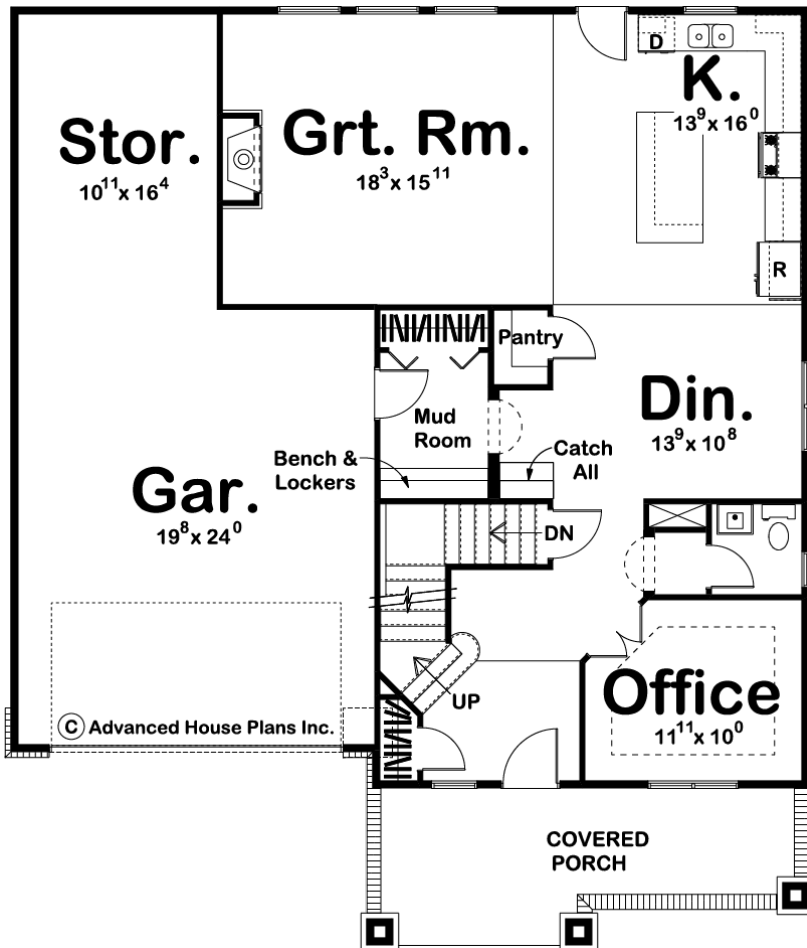


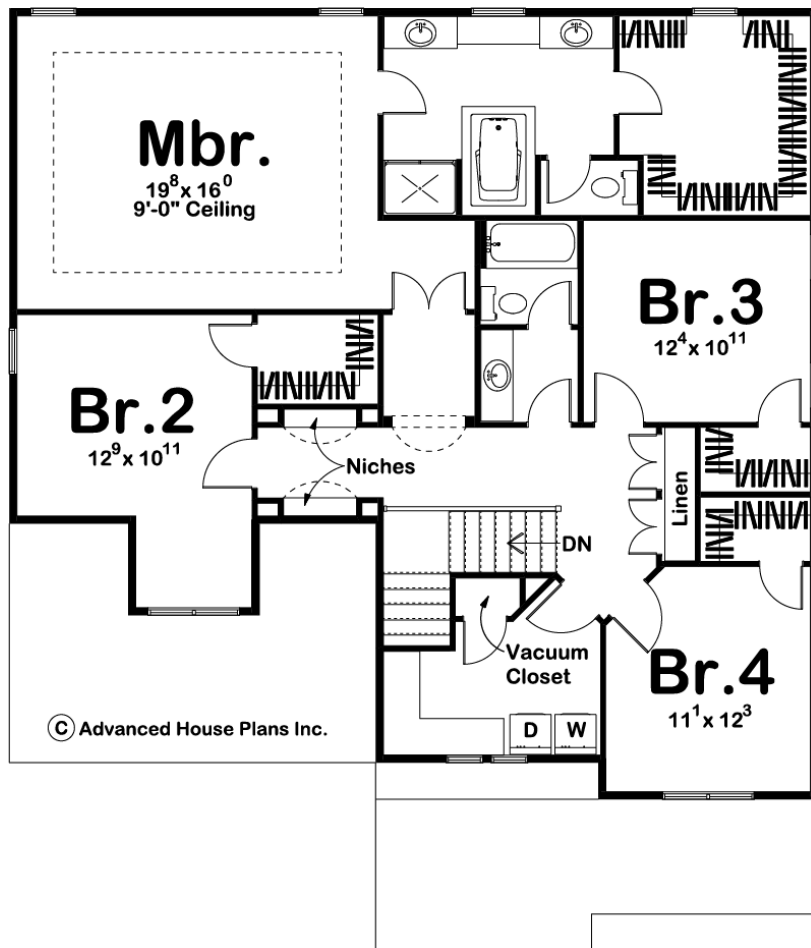
ADVANCED
HOUSE PLANS



29300 - Windrush Data Sheet

2732 SQ FT	4 BEDS	3 BATHS	2 BAYS	44' 0" WIDE	52' 0" DEEP
---------------	-----------	------------	-----------	----------------	----------------





Construction Specs

Layout

Bedrooms	4
Bathrooms	3
Garage Bays	2

Square Footage

Main Level	1176 Sq. Ft.
Second Level	1556 Sq. Ft.
Garage	677 Sq. Ft.
Total Finished Area	2732 Sq. Ft.

Exterior Dimensions

Width	44' 0"
Depth	52' 0"
Ridge Height	34'
<i>Calculated from main floor line</i>	

Default Construction Stats

Stats are unique to the individual plan.

Foundation Type	Basement
Exterior Wall Construction	2x4
Roof Pitches	8/12 Primary, 12/12 Secondary
Foundation Wall Height	9'
Main Wall Height	9'
Second Wall Height	8'

Plan Description

A cluster of gables, tastefully arranged above a stout front porch, harken the sense of simpler times in this family-friendly 2-story house plan. An uncomplicated, cost-efficient foundation "footprint" enhances the design's overall appeal. Inside, the entry hall with convenient coat closet presents an adjacent office and powder bath. Farther in, the dining area uniquely accesses a walk-in pantry and handy catch-all, while maintaining an open arrangement with the island kitchen. Also open to the kitchen is the great room, with fireplace and sunny views to the outdoors. A practical mud room with bench, lockers and closet, accesses the 2-car garage that is extended with a generous storage area to the rear. Upstairs, a sprawling master suite includes a pampering bath area with his-and-her vanities, soaking tub, shower, compartmented toilet and large walk-in closet with window. All secondary bedrooms have walk-in closets and share a central hall bath. The second-level landing and hallway features display niches and a sizeable linen closet. A laundry room, with ample counter space and a vacuum closet, conveniently serves all bedrooms.