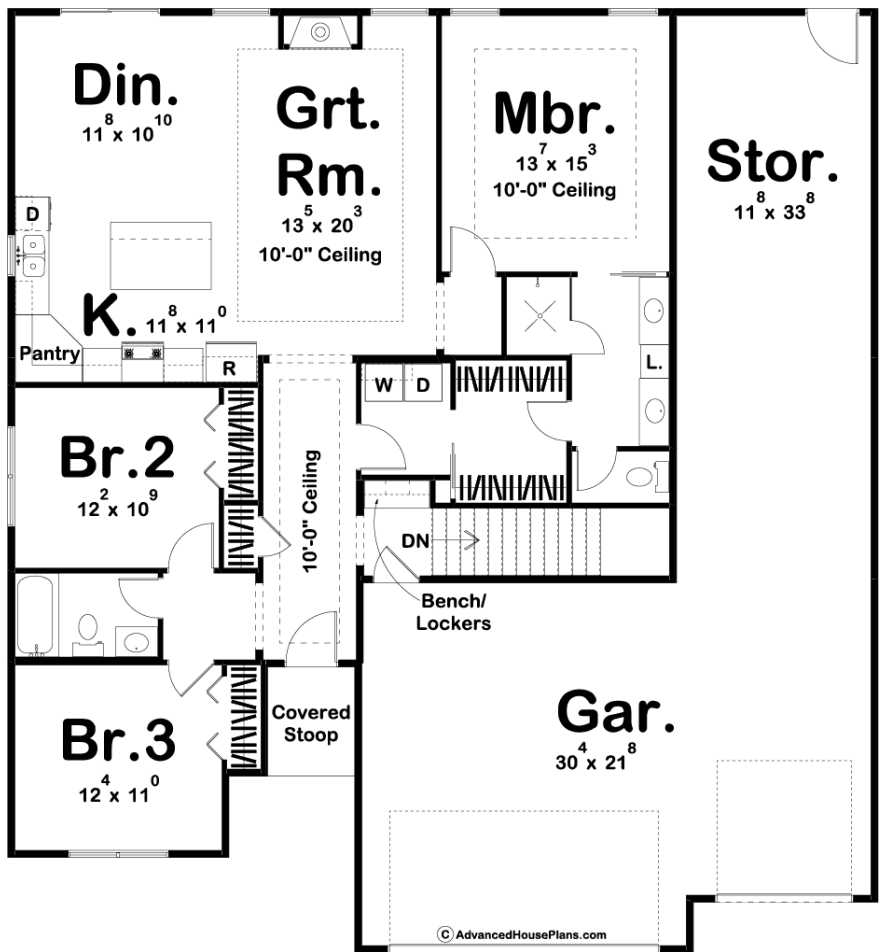




**29679 - Willow Grove Data Sheet**

|               |           |            |           |                |                |
|---------------|-----------|------------|-----------|----------------|----------------|
| 1617<br>SQ FT | 3<br>BEDS | 2<br>BATHS | 4<br>BAYS | 51' 8"<br>WIDE | 66' 0"<br>DEEP |
|---------------|-----------|------------|-----------|----------------|----------------|



**Construction Specs**

Layout

Bedrooms

|             |   |
|-------------|---|
| Bathrooms   | 2 |
| Garage Bays | 4 |

### Square Footage

|                     |              |
|---------------------|--------------|
| Main Level          | 1617 Sq. Ft. |
| Garage              | 1056 Sq. Ft. |
| Total Finished Area | 1617 Sq. Ft. |

### Exterior Dimensions

|       |        |
|-------|--------|
| Width | 51' 8" |
| Depth | 66' 0" |

### Default Construction Stats

*Stats are unique to the individual plan.*

|                            |                              |
|----------------------------|------------------------------|
| Foundation Type            | Basement                     |
| Exterior Wall Construction | 2x4                          |
| Roof Pitches               | 6/12 Primary, 4/12 Secondary |
| Foundation Wall Height     | 9'                           |
| Main Wall Height           | 9'                           |

## Plan Description

A seemingly endless array of enticing amenities are found in this 1 story, Craftsman-style house plan. A covered front stoop greets guests, who upon entering the home, are treated to views of the great room. The great room captivates its occupants with a trayed ceiling and is warmed by a fireplace. The kitchen, with an island workspace and pantry, flows seamlessly into the dining room. The master suite includes a master bath with his and her vanities and a walk-in closet with access to the laundry room. Bedrooms 2 and 3 share a centrally located hall bathroom. This homes massive garage has enough room for a 4th car or storage. As always any Advanced House Plans home plan can be customized to fit your needs with our alteration department. Whether you need to add another garage stall, change the front elevation, stretch the home larger or just make the home plan more affordable for your budget we can do that and more for you at Ahp.