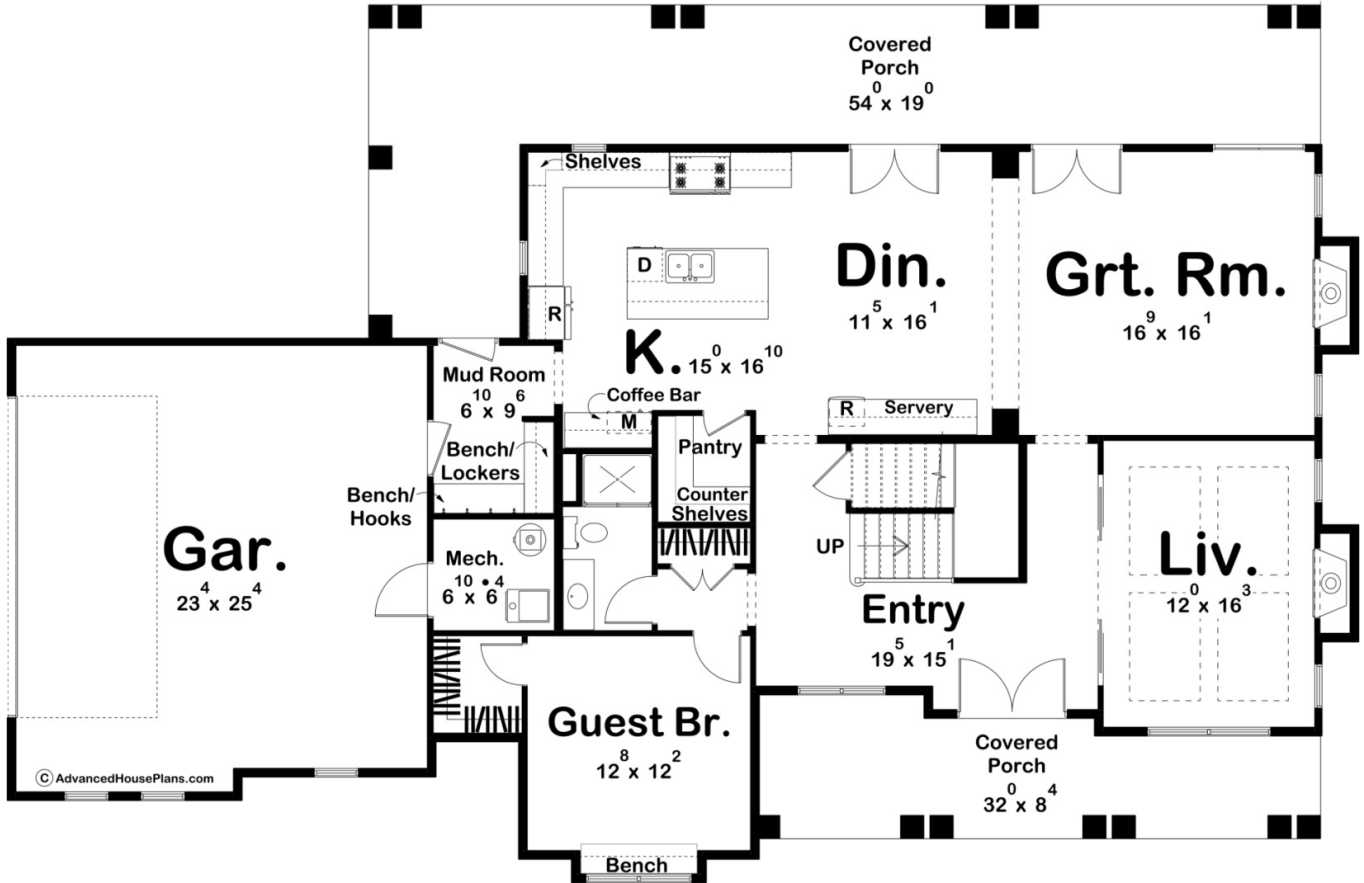
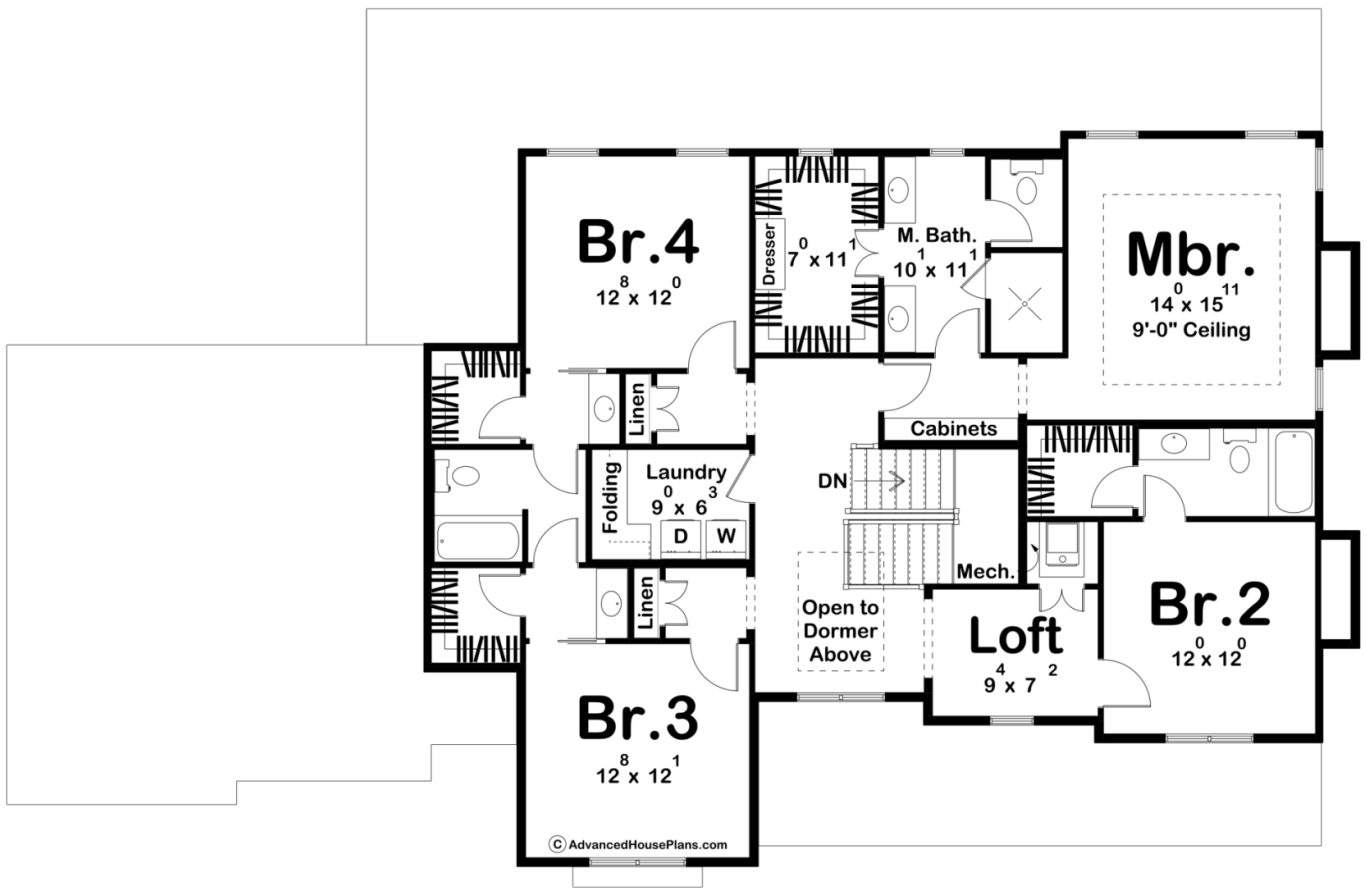




30323 - Wharton Data Sheet

3257 SQ FT	5 BEDS	4 BATHS	2 BAYS	76' 4" WIDE	49' 8" DEEP
---------------	-----------	------------	-----------	----------------	----------------





Construction Specs

Layout

Bedrooms	5
Bathrooms	4
Garage Bays	2

Square Footage

Main Level	1659 Sq. Ft.
Second Level	1598 Sq. Ft.
Covered Area	751 Sq. Ft.
Garage	602 Sq. Ft.
Total Finished Area	3257 Sq. Ft.

Exterior Dimensions

Width	76' 4"
Depth	49' 8"

Default Construction Stats

Stats are unique to the individual plan.

Foundation Type	Slab
Exterior Wall Construction	2x4
Roof Pitches	Primary 10/12, Secondary 12/12, 4/12, 6/12
Main Wall Height	9'
Second Wall Height	8'

Plan Description

Welcome to your dream home! This two-story house plan offers the perfect blend of elegance and functionality, providing ample space for your family and guests. With five bedrooms, including a convenient guest bedroom on the main floor, this house is designed to accommodate all your needs. The exterior of this home exudes classic charm with a large covered porch gracing both the front and rear entrances. These inviting spaces offer a perfect setting for relaxation, outdoor gatherings, or simply enjoying the fresh air. Upon entering the home, you'll find yourself in a welcoming foyer that opens up to the main living areas on either side of the stairs. To your right, you'll discover a spacious living room, filled with natural light from large windows that overlook the front porch. There is a tray ceiling and fireplace to set the mood. To your left is the guest bedroom, complete with a hall bathroom, ensuring that your visitors have a comfortable and private stay. The heart of the home lies in the open-concept kitchen, dining area, and great room. The kitchen boasts modern amenities, ample counter space, and a central island, making it a chef's delight. The dining area is well-lit and spacious, perfect for family meals or entertaining. It also includes a large servery for all your hosting needs. The great room, with its cozy fireplace and access to the rear porch, offers a warm and inviting space for relaxation and gatherings. Heading upstairs, you'll find four generously sized bedrooms, each with its own character and charm. Two bedrooms share access to a jack-and-jill bathroom, and walk-in closets ensure that everyone has room for their belongings. One bedroom has its own ensuite with a walk-in closet as well. The final bedroom is the master. It has a large walk-in closet and an ensuite. There is a double vanity and large walk-in shower. The room itself has a tray ceiling and many windows to allow in plenty of natural light. The second-floor layout provides flexibility, making it suitable for a growing family or accommodating various needs. Additional Features: A dedicated laundry room conveniently located on the second floor. Abundant storage space throughout the home, including closets, a walk-in pantry, and a two-car garage. Thoughtful design that maximizes natural light and promotes energy efficiency. Customizable finishes and interior design options to suit your personal style. This two-story house plan is not just a house; it's a place where you can create cherished memories with your loved ones. With its spacious layout, modern amenities, and charming exterior, it offers a warm and inviting atmosphere that you'll be proud to call home. Whether you're enjoying a quiet evening on the front porch or hosting a lively gathering in the great room, this house is designed to meet your family's needs and exceed your expectations.