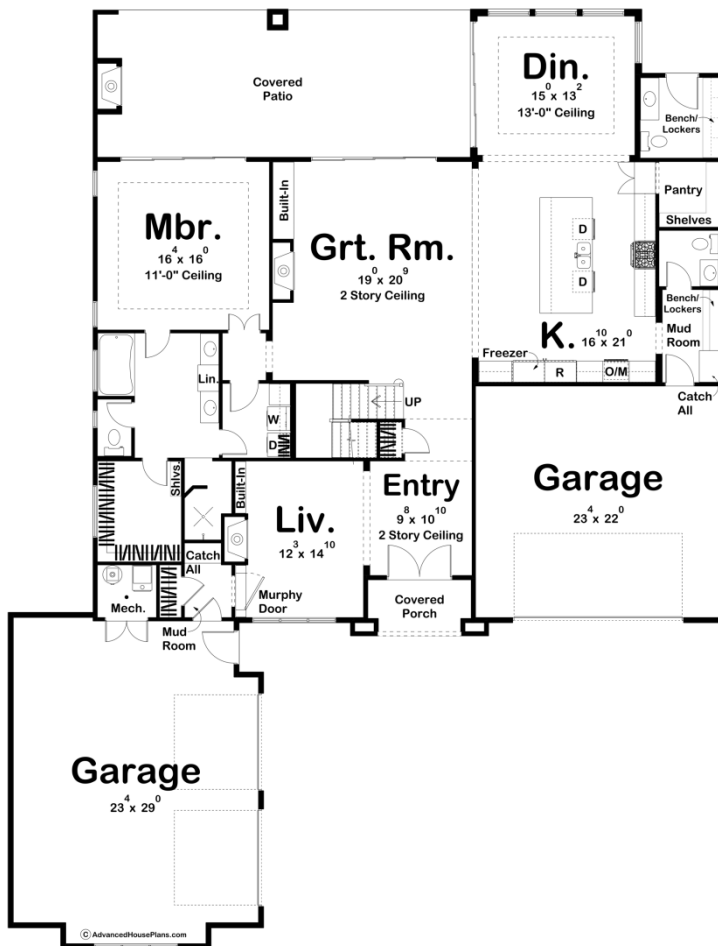
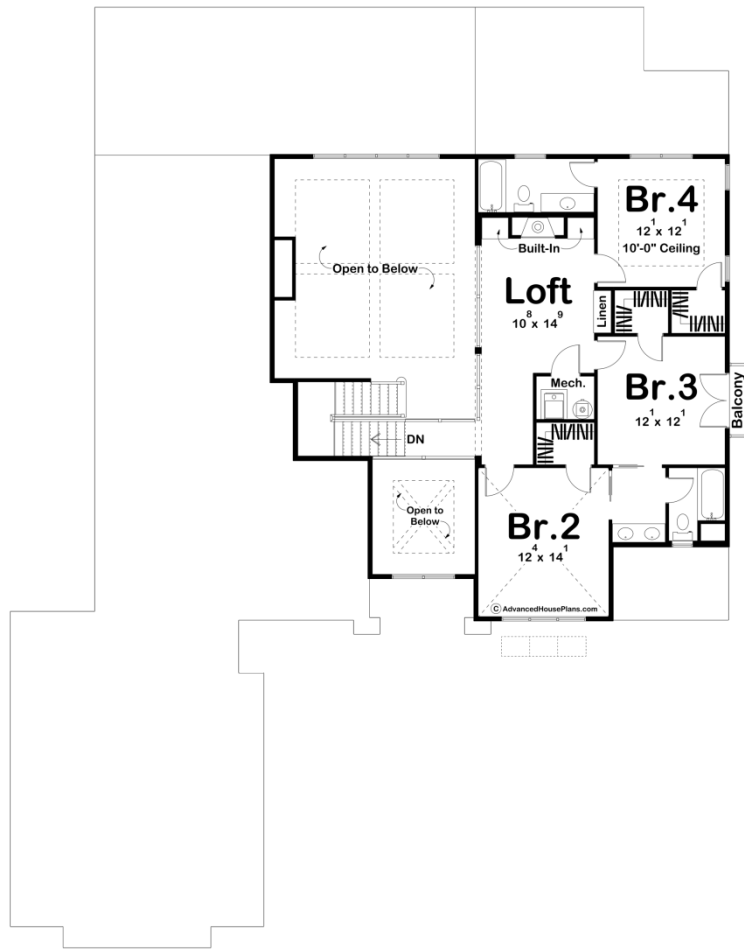




**30135 - West Palms Data Sheet**

3392 SQ FT	4 BEDS	5 BATHS	4 BAYS	68' 0" WIDE	89' 0" DEEP
---------------	-----------	------------	-----------	----------------	----------------





## Construction Specs

### Layout

Bedrooms	4
Bathrooms	5
Garage Bays	4

### Square Footage

Main Level	2358 Sq. Ft.
Second Level	1034 Sq. Ft.
Covered Area	561 Sq. Ft.
Garage	1286 Sq. Ft.
Total Finished Area	3392 Sq. Ft.

### Exterior Dimensions

Width	68' 0"
Depth	89' 0"

### Default Construction Stats

*Stats are unique to the individual plan.*

Foundation Type	Slab
Exterior Wall Construction	2x4
Roof Pitches	4/12 Primary, Flat Secondary
Main Wall Height	10'
Second Wall Height	9'

## Plan Description

The West Palms plan is a stunning 1.5 Story, Mediterranean style house plan. The exterior of the home features a 4-car split garage and stucco siding. A low 4/12 pitch tile roof gives the home the distinct Mediterranean look. Just inside the home, a large 2-story entry way is immediately adjacent to the formal living room that is warmed by a fireplace and features a cool hidden murphy door that leads to the garage. Further inside the home, the main living area is arranged in a beautiful open layout. The kitchen is a chef's dream that features a large island with dual dishwashers and a snack bar. A large walk-in pantry features built-in shelves. The great room features a soaring 2-story ceiling and is warmed by a fireplace that includes a built-in bookshelf. A massive sliding glass door leads outside to the rear covered patio. The dining room also has its own sliding glass door with access to the patio. The master suite is conveniently located on the main floor. The master bathroom includes an oversized tub, his/her vanities, a walk-in shower, and a massive walk-in closet. The master bedroom lies under a decorative trayed ceiling and has its own access to the patio through a sliding glass door. On the second floor, a loft provides the kids a perfect place to play. The loft is warmed by a fireplace with built-in shelves. You will also find 3 additional bedrooms on the second floor. Each bedroom has its own walk-in closet. Bedrooms 2 and 3 share a jack and jill bathroom.