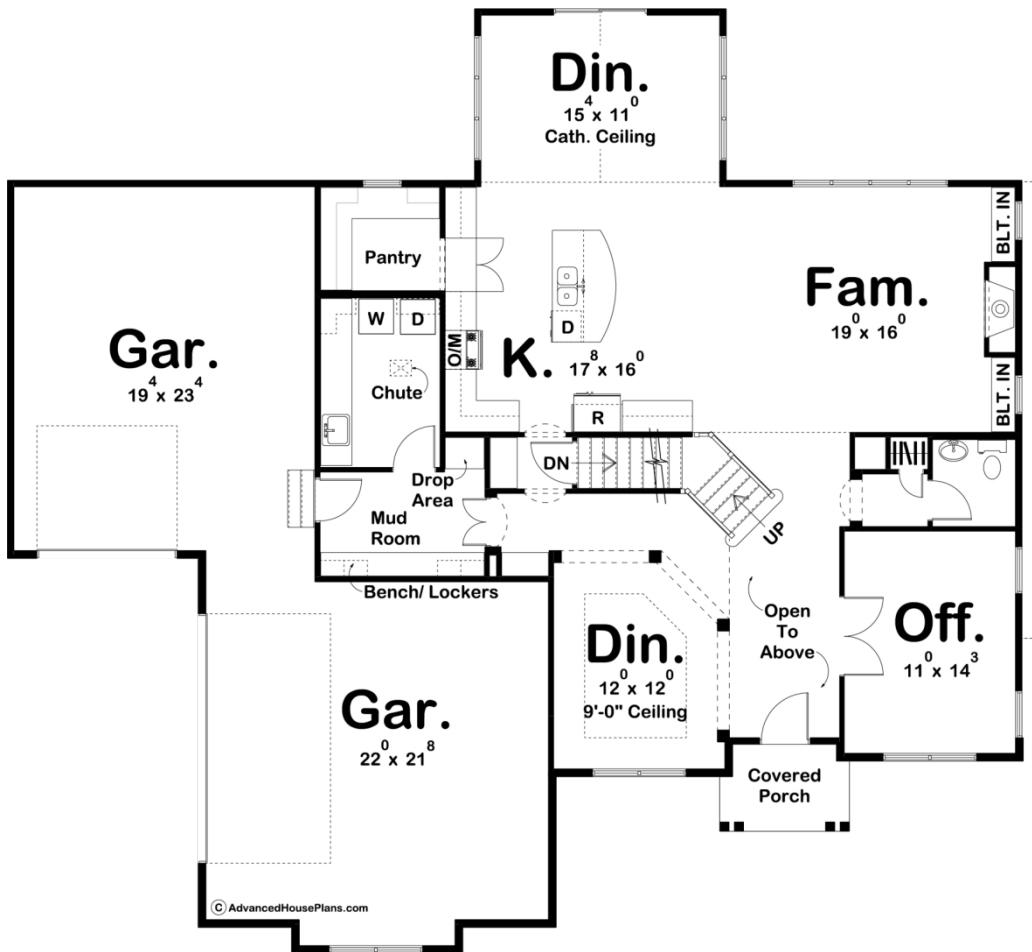
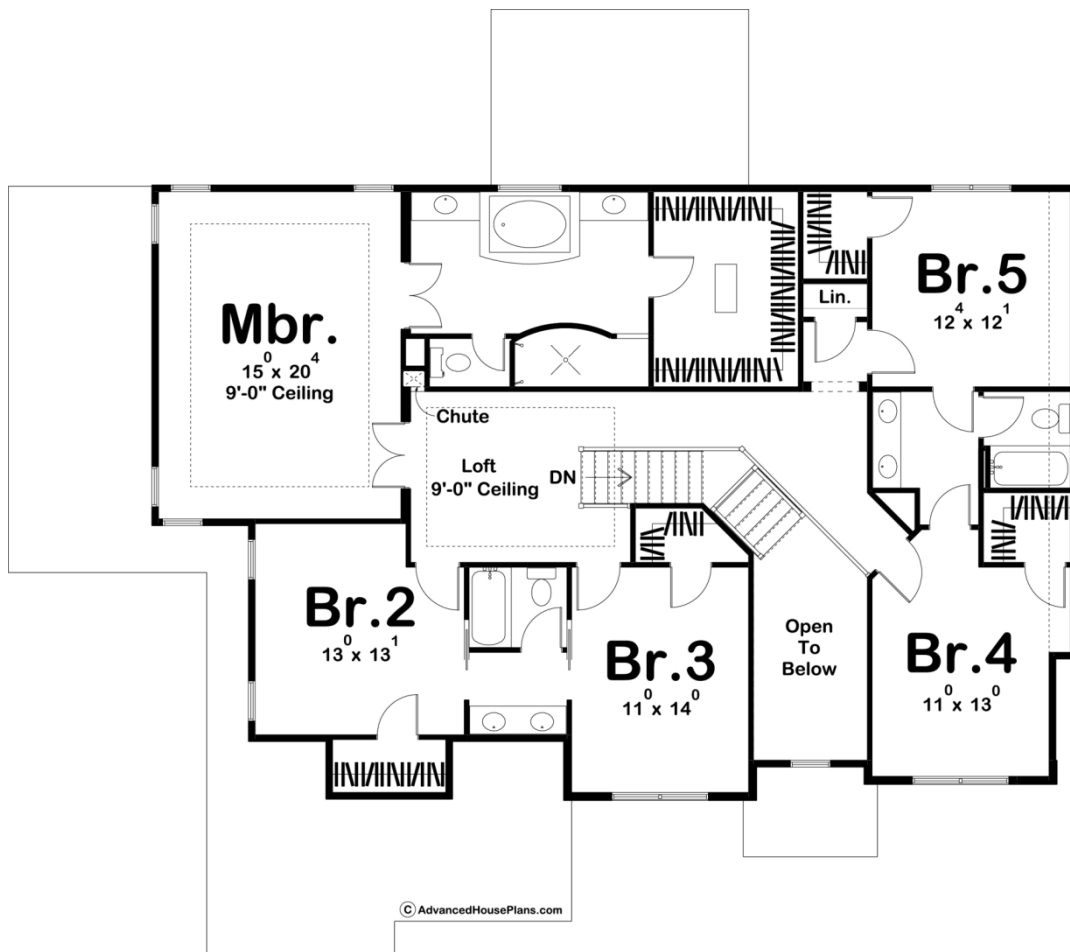




**29725 - Wellington Data Sheet**

3617 SQ FT	5 BEDS	4 BATHS	3 BAYS	67' 0" WIDE	61' 0" DEEP
---------------	-----------	------------	-----------	----------------	----------------





## Construction Specs

### Layout

Bedrooms	5
Bathrooms	4
Garage Bays	3

### Square Footage

Main Level	1688 Sq. Ft.
Second Level	1929 Sq. Ft.
Garage	957 Sq. Ft.
Total Finished Area	3617 Sq. Ft.

### Exterior Dimensions

Width	67' 0"
Depth	61' 0"

### Default Construction Stats

*Stats are unique to the individual plan.*

Foundation Type	Basement
-----------------	----------

Exterior Wall Construction	2x4
Roof Pitches	8/12 Primary, 12/12 Secondary
Foundation Wall Height	9'
Main Wall Height	9'
Second Wall Height	8'

## Plan Description

The Wellington is sure to impress in your neighborhood with its beautiful Modern Farmhouse style exterior. The combination of wood, board and batten siding, and brick gives this home great curb appeal. Upon entering the home through its front covered porch you will walk into a grand 2 story entry. The entry leads to a formal dining room on one side and an office with french doors on the other. Further, into the home, the large family room is warmed by a fireplace that is flanked by built-in bookshelves. The family room flows into the kitchen that includes a large kitchen island and a large walk-in pantry. Upstairs, you'll find 5 bedrooms. The master suite is perfectly situated with a large walk-in closet and a bath with his/her vanities and a large walk-in shower. Bedrooms 2 and 3 share a jack and jill bath and bedrooms 4 and 5 share a jack and jill bath. Back on the main floor, the homes 3 car garage accesses the home through a convenient mudroom. A convenient laundry room is accessed from the mudroom and includes a laundry chute from upstairs.