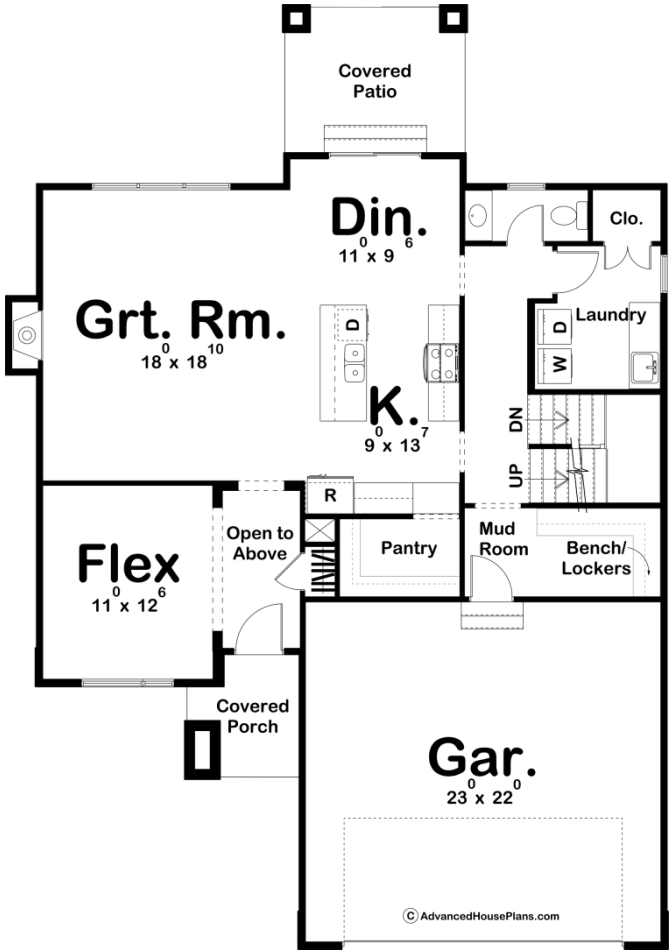
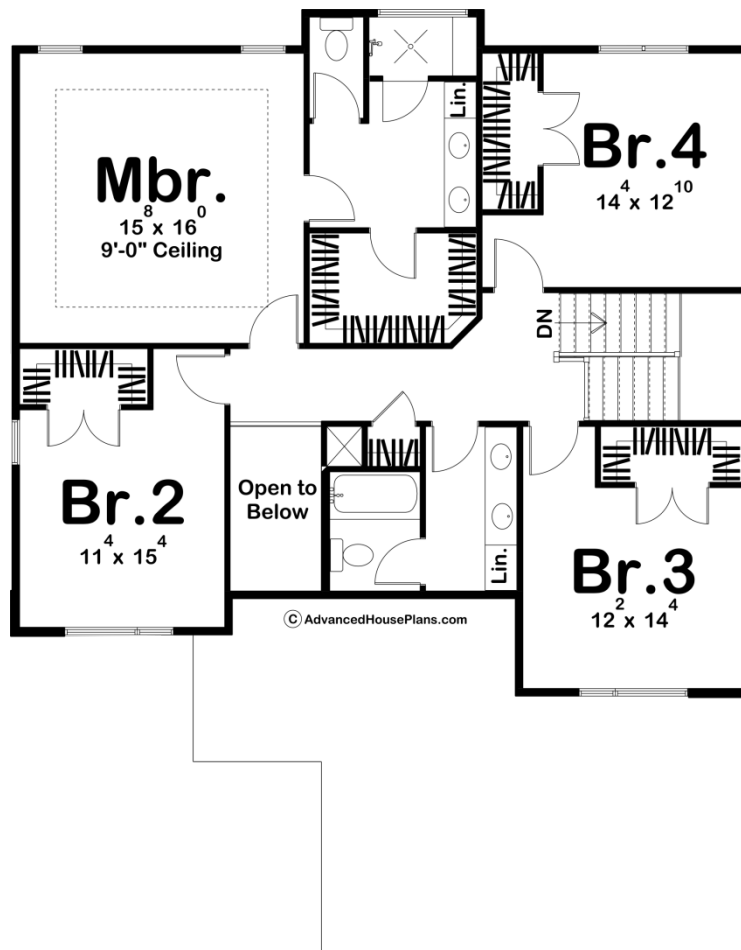




29690 - Watkins Data Sheet

2443 SQ FT	4 BEDS	3 BATHS	2 BAYS	43' 0" WIDE	61' 0" DEEP
---------------	-----------	------------	-----------	----------------	----------------





Construction Specs

Layout

Bedrooms	4
Bathrooms	3
Garage Bays	2

Square Footage

Main Level	1203 Sq. Ft.
Second Level	1240 Sq. Ft.
Garage	527 Sq. Ft.
Total Finished Area	2443 Sq. Ft.

Exterior Dimensions

Width	43' 0"
Depth	61' 0"

Default Construction Stats

Stats are unique to the individual plan.

Foundation Type	Basement
-----------------	----------

Exterior Wall Construction	2x4
Roof Pitches	4/12 Primary
Foundation Wall Height	9'
Main Wall Height	9'
Second Wall Height	8'

Plan Description

The Watkins is a 2 story Modern Prairie-style masterpiece! Along with a gorgeous facade, this house plan has many great Family-Centered features that make this an excellent plan for builders and homeowners alike. This house plan is designed with deep overhangs and a contemporary nod to the famous prairie-style home. The elevation combines the use of stone, stucco, and cedar to give it an ultra-modern look. The main floor features a well-designed kitchen with walk-in pantry, flex room, and covered patio out back. The stairs are tucked away from the public areas of the house, giving it a private feel and more conveniently accessed from the garage entrance which has bench and lockers integrated into the wall for a simple, efficient drop zone. The second floor features a generously-sized master suite, with tray ceiling, walk-in shower, and large walk-in closet. Each of the secondary bedrooms has a walk-in closet and share a centrally located bath.