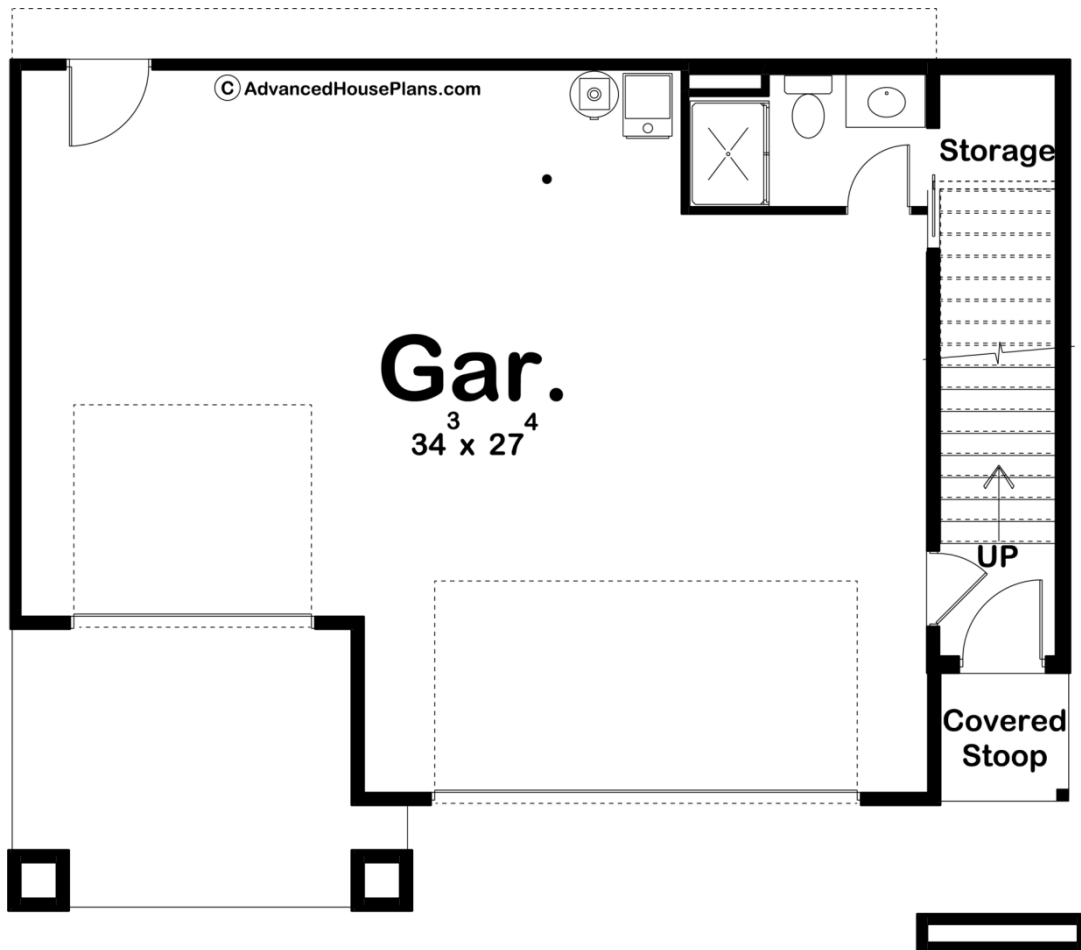
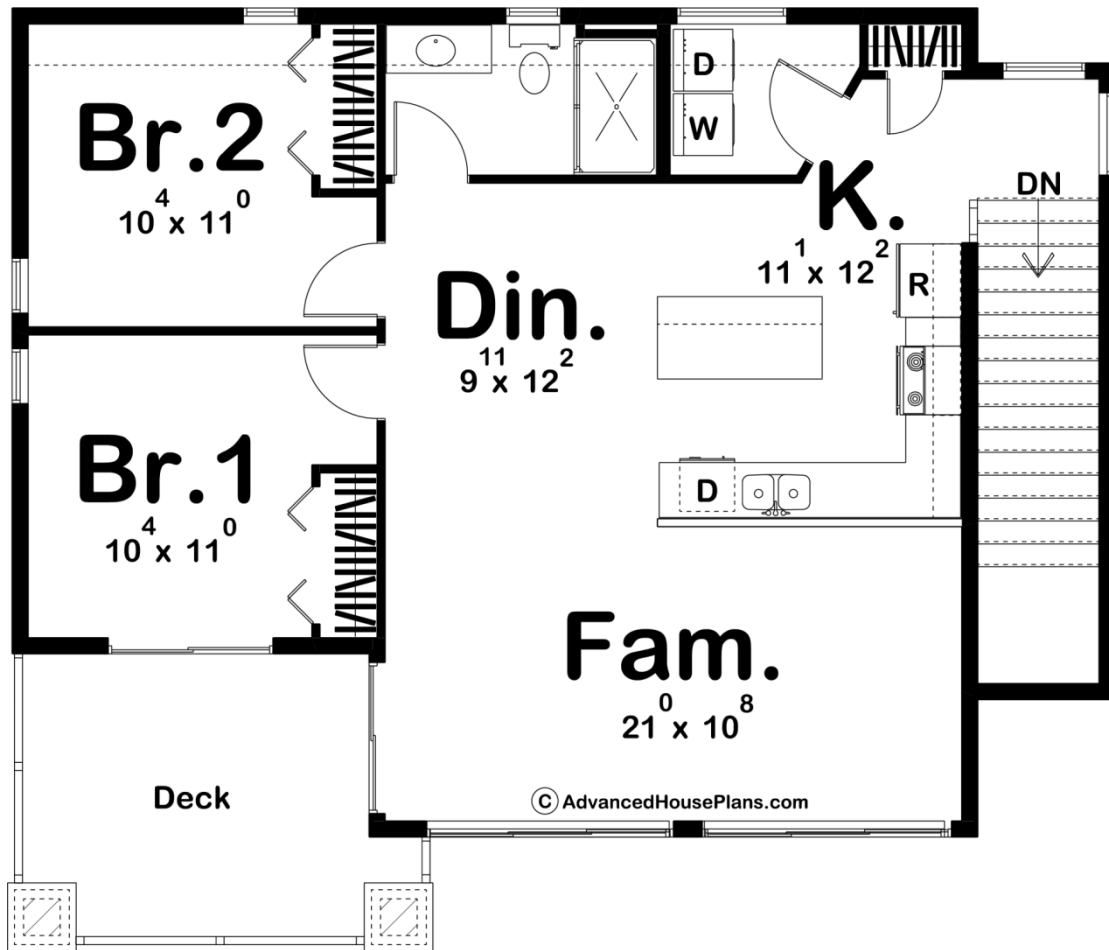




### 29823 - Timber Valley Data Sheet

1161 SQ FT	2 BEDS	2 BATHS	3 BAYS	41' 0" WIDE	34' 0" DEEP
---------------	-----------	------------	-----------	----------------	----------------





## Construction Specs

### Layout

Bedrooms	2
Bathrooms	2
Garage Bays	3

### Square Footage

Main Level	165 Sq. Ft.
Second Level	996 Sq. Ft.
Garage	834 Sq. Ft.
Total Finished Area	1161 Sq. Ft.

### Exterior Dimensions

Width	41' 0"
Depth	34' 0"

### Default Construction Stats

*Stats are unique to the individual plan.*

Foundation Type	Slab
-----------------	------

Exterior Wall Construction	2x6
Roof Pitches	4/12 Primary, 6/12 Secondary
Main Wall Height	9'
Second Wall Height	8'

## Plan Description

The Timber Valley is a modern carriage house plan that has excellent curb appeal. The exterior features a mixture of wood, stone, and glass. The main floor has 3 garage bays and a bathroom. Upstairs there is a full apartment that includes a full kitchen and 2 bedrooms.