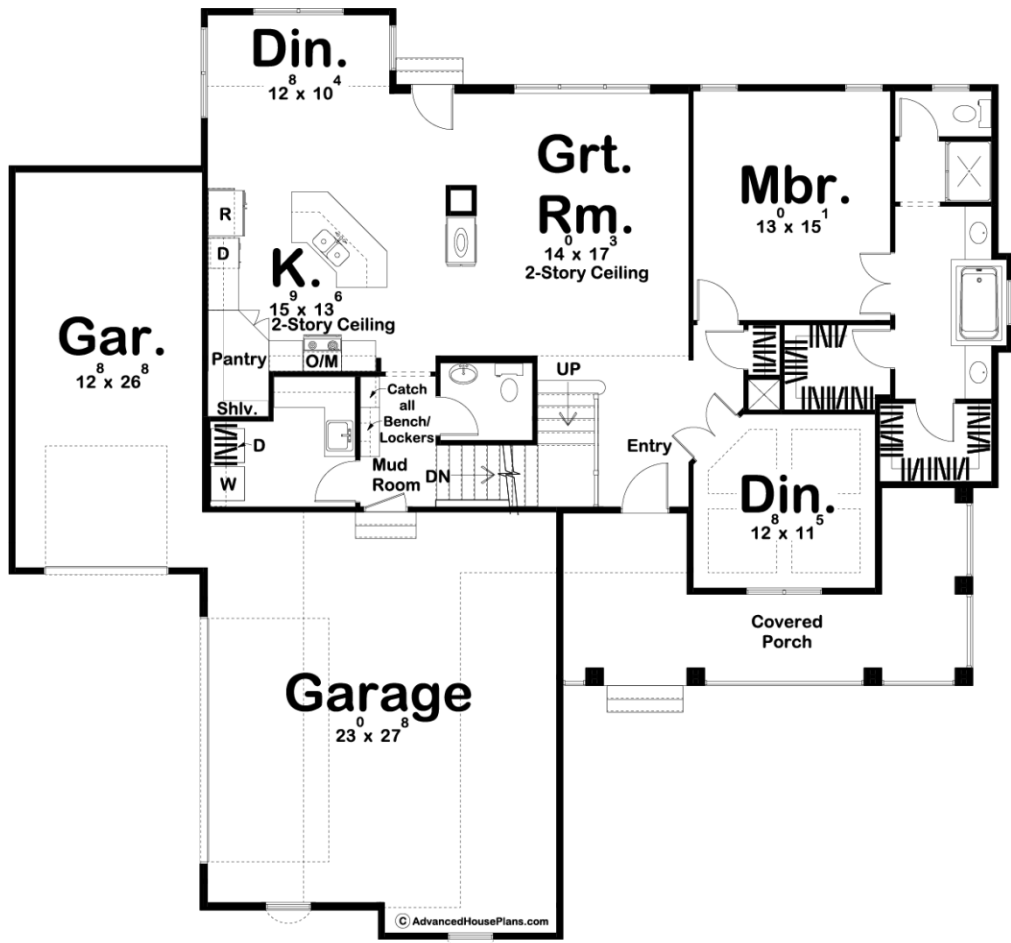
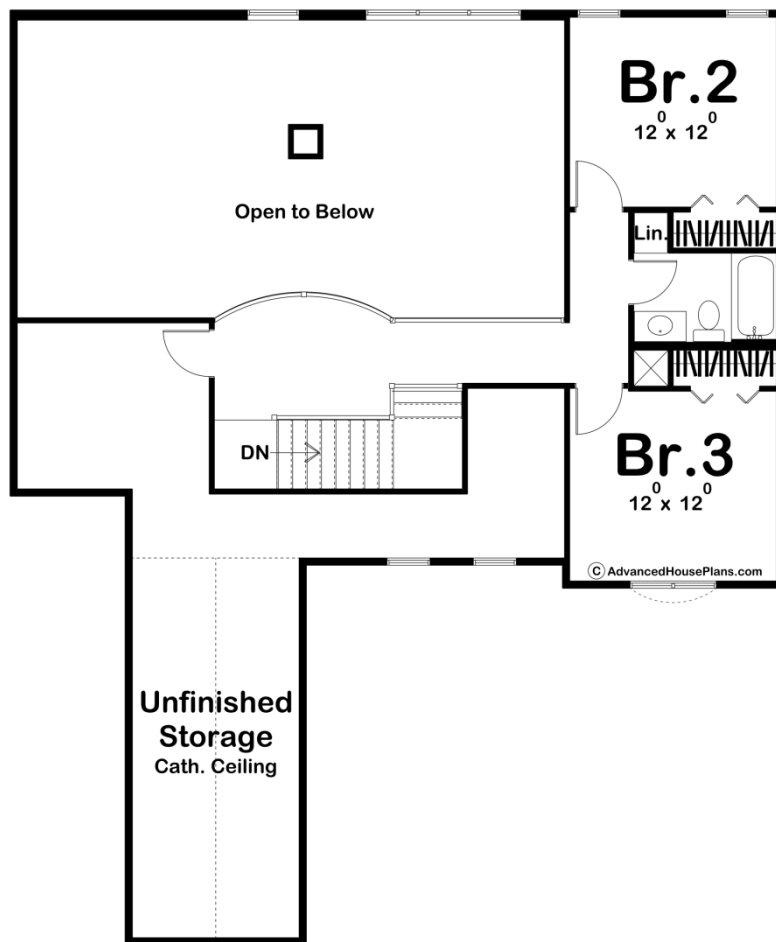




29140 - Thompson Data Sheet

2150 SQ FT	3 BEDS	3 BATHS	3 BAYS	65' 0" WIDE	61' 0" DEEP
---------------	-----------	------------	-----------	----------------	----------------





Construction Specs

Layout

Bedrooms	3
Bathrooms	3
Garage Bays	3

Square Footage

Main Level	1590 Sq. Ft.
Second Level	560 Sq. Ft.
Garage	975 Sq. Ft.
Total Finished Area	2150 Sq. Ft.

Exterior Dimensions

Width	65' 0"
Depth	61' 0"
Ridge Height	28'
<i>Calculated from main floor line</i>	

Default Construction Stats
Stats are unique to the individual plan.

Foundation Type	Basement
Exterior Wall Construction	2x4
Roof Pitches	Primary 7/12, Secondary 10/12
Foundation Wall Height	9'
Main Wall Height	9'
Second Wall Height	8'

Plan Description

A wrapping front porch chimes in with a trio of soaring gables on this Traditional-Style, 1.5-story house plan. Just inside, double doors reveal the presence of a private den that resides beneath a boxed beam ceiling. A few steps further lead guests into the great room, which shares a 2-story-high ceiling with the kitchen and a portion of the breakfast area. Also shared with the kitchen area is a fireplace, open on three sides for optimal enjoyment. The kitchen itself is smartly designed with an island work area and walk-in pantry. Just off the kitchen, a utility area includes a laundry room, powder bath, and mudroom with built-in bench. This area accesses the home's 3-car garage, which is comprised of a 2-car, side-load garage and a 1-car, front-load garage. On the opposite side of the home, the master suite enjoys its solitude and is graced by a bath area that features his-and-her vanities, soaking tub, shower, compartmented toilet, and two separate walk-in closets. Upstairs, bedrooms 2 and 3 share a central hall bath. The upper-level landing offers views to the great room below and provides access to a large unfinished storage area.