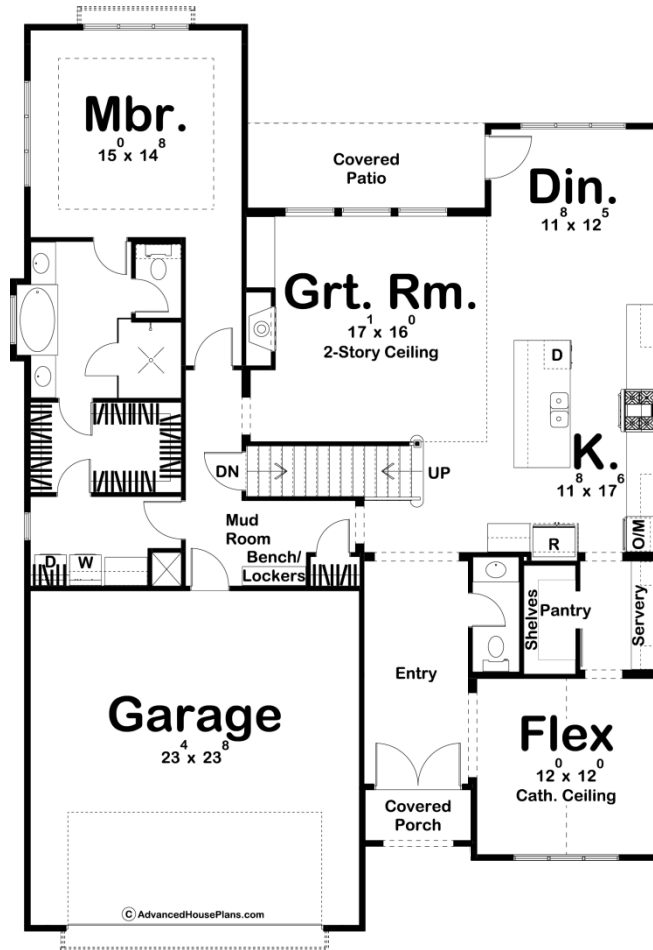
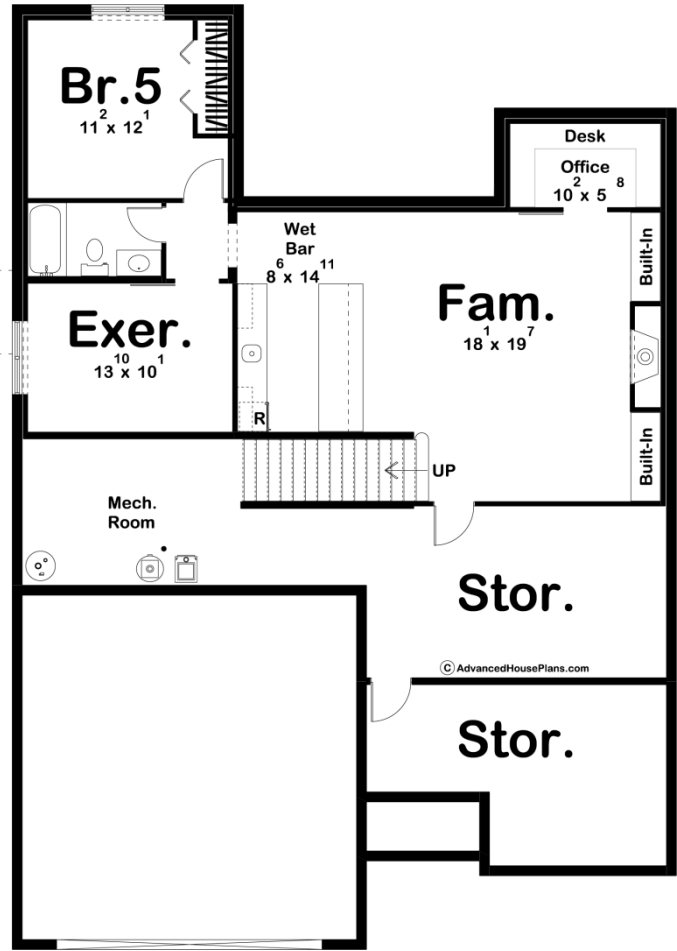
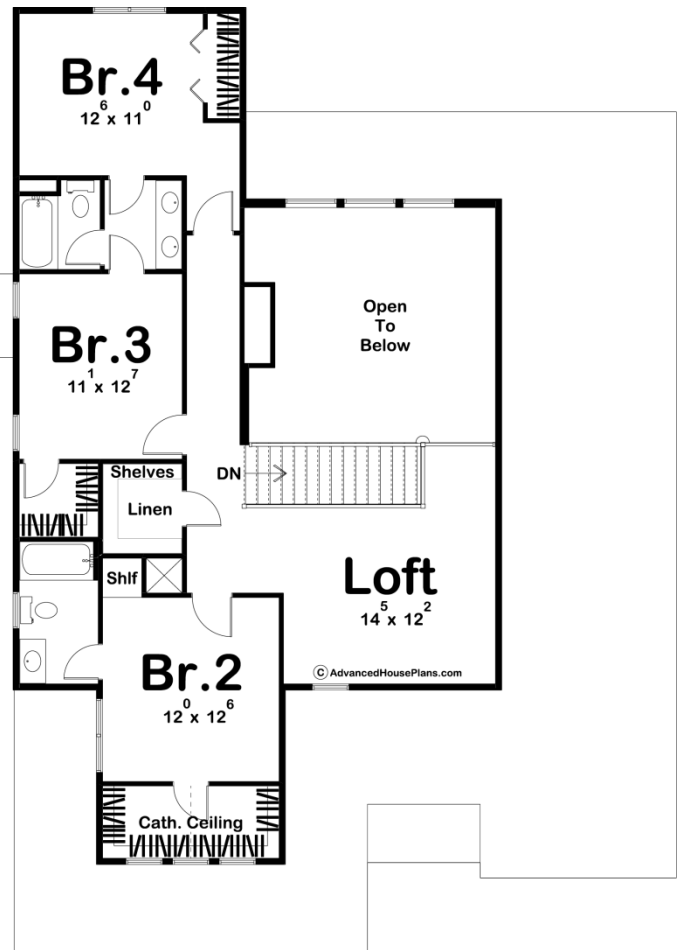




29859 - Stockton Data Sheet

2983 SQ FT	4 BEDS	4 BATHS	2 BAYS	46' 0" WIDE	64' 0" DEEP
---------------	-----------	------------	-----------	----------------	----------------





Construction Specs

Layout

Bedrooms	4
Bathrooms	4
Garage Bays	2

Square Footage

Main Level	1864 Sq. Ft.
Second Level	1119 Sq. Ft.
Garage	571 Sq. Ft.
Total Finished Area	2983 Sq. Ft.

Exterior Dimensions

Width	46' 0"
Depth	64' 0"
Ridge Height <i>Calculated from main floor line</i>	27' 1"

Default Construction Stats

Stats are unique to the individual plan.

Foundation Type	Basement
Exterior Wall Construction	2x4
Roof Pitches	6/12 Primary
Foundation Wall Height	9'
Main Wall Height	9'
Second Wall Height	8'

Plan Description

The Stockton plan combines the timeless farmhouse look with the contemporary style. The outside is highlighted by contrasting siding and a large glass garage door. Just inside the home, you'll find a great flex room that would be great for an office or a formal dining room. The flex room accesses the kitchen through a hallway that includes the large walk-in pantry and server. The kitchen includes a large island and looks out into the great room. The great room is warmed by a soaring fireplace and lies under a 2 story ceiling. The dining room accesses the rear patio for your outdoor entertainment. On the left side of the main floor, you'll find the amazing master suite. The master bedroom lies under a tray ceiling and includes a soaking tub, his/her vanities, and enclosed toilet area, and a walk-in closet that conveniently accesses the laundry room. On the second floor, there are 3 bedrooms. Bedrooms 3 and 4 share a jack and jill bathroom while bedroom 2 has access to its own bathroom. A wonderful loft area makes a great play space for kids. An optional finished basement adds 1067 sq ft and includes a large family room with a fireplace, an exercise room, an additional bedroom, a pocket office, and ample storage space.