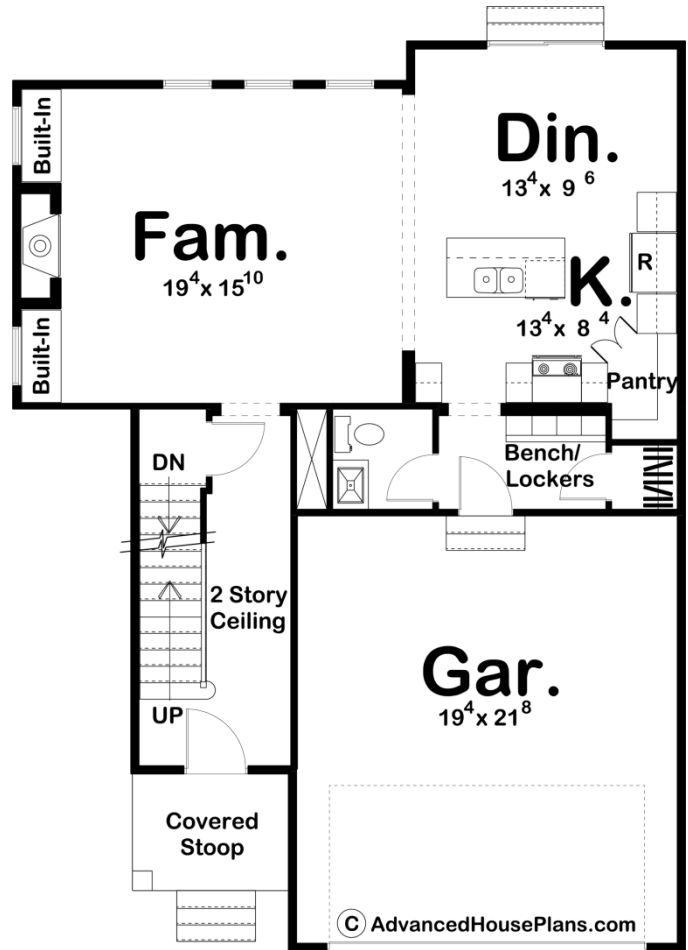
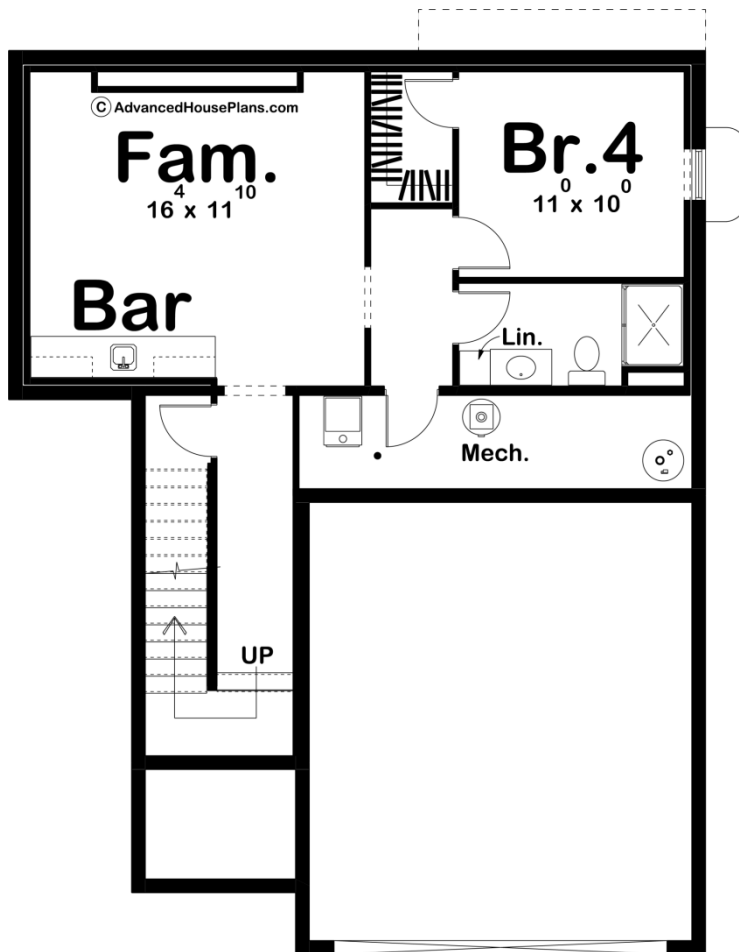
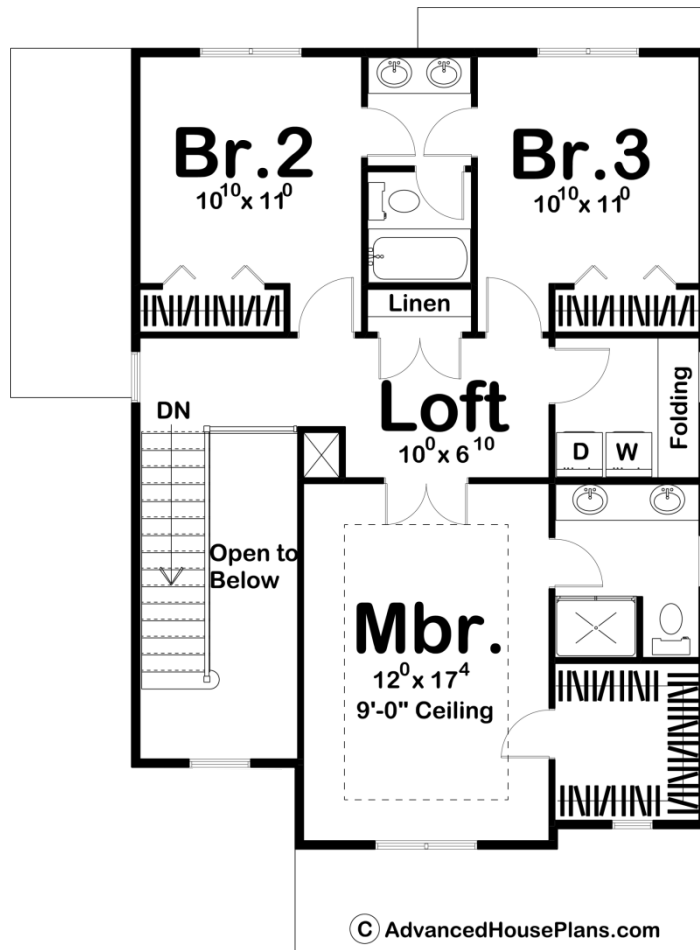




29794 - Stalbird Data Sheet

1777 SQ FT	3 BEDS	3 BATHS	2 BAYS	34' 4" WIDE	46' 0" DEEP
---------------	-----------	------------	-----------	----------------	----------------





Construction Specs

Layout

Bedrooms	3
Bathrooms	3
Garage Bays	2

Square Footage

Main Level	858 Sq. Ft.
Second Level	919 Sq. Ft.
Garage	425 Sq. Ft.
Total Finished Area	1777 Sq. Ft.

Exterior Dimensions

Width	34' 4"
Depth	46' 0"
Ridge Height <i>Calculated from main floor line</i>	28' 0"

Default Construction Stats

Stats are unique to the individual plan.

Foundation Type	Basement
Exterior Wall Construction	2x4
Roof Pitches	6/12 Primary, 8/12 4/12 Secondary
Foundation Wall Height	9'
Main Wall Height	9'
Second Wall Height	8'

Plan Description

The Stalbird plan is a beautiful, cost effective Modern Farmhouse plan. The exterior blends board and batten siding with stone to give it that highly sought after Modern Farmhouse curb appeal. Inside this efficient home is a wonderful, well thought out floorplan. The main floor includes a family room that is warmed by a fireplace that is flanked by built-in bookshelves. The kitchen includes a large island with a snack bar and a hidden walk-in pantry. Upstairs, you will find 3 bedrooms. The master bedroom has its own bathroom with his/her vanities and a large walk-in closet. Bedrooms 2 and 3 share a jack and jill bathroom. An optional finished basement adds 584 sq ft and includes an additional bedroom and a family room with a bar.