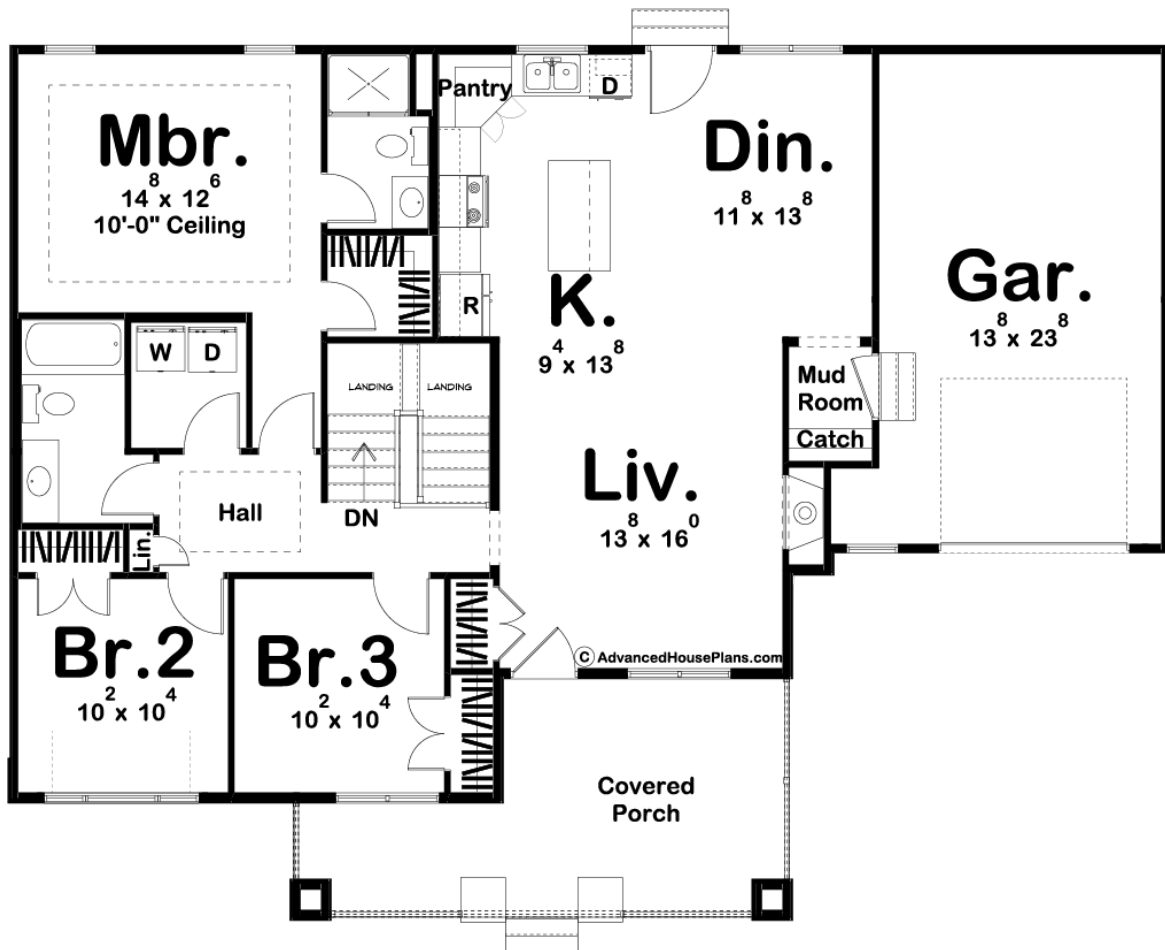




**29763 - Spaulding Data Sheet**

1365 SQ FT	3 BEDS	2 BATHS	1 BAYS	55' 0" WIDE	42' 0" DEEP
---------------	-----------	------------	-----------	----------------	----------------



**Construction Specs**

Layout

Bedrooms

Bathrooms	2
-----------	---

Garage Bays	1
-------------	---

### Square Footage

Main Level	1365 Sq. Ft.
------------	--------------

Garage	359 Sq. Ft.
--------	-------------

Total Finished Area	1365 Sq. Ft.
---------------------	--------------

### Exterior Dimensions

Width	55' 0"
-------	--------

Depth	42' 0"
-------	--------

### Default Construction Stats

*Stats are unique to the individual plan.*

Foundation Type	Basement
-----------------	----------

Exterior Wall Construction	2x4
----------------------------	-----

Roof Pitches	8/12 Primary, 12/12 Secondary
--------------	-------------------------------

Foundation Wall Height	9'
------------------------	----

Main Wall Height	9'
------------------	----

## Plan Description

If you love old-world charm, the Spaulding plan is perfect for you. This charming cottage style plan has an exterior that features shake siding and lap siding along with sturdy columns on the front covered porch. Once inside the home, you'll see the home's great open floor plan. The kitchen includes a walk-in pantry and a large kitchen island with a snack bar. The master suite featured a walk-in closet and a tray ceiling. Bedrooms 2 and 3 share a conveniently located hall bathroom. The Spaulding's 1 car garage accesses the home through a convenient mudroom that includes a wonderful catchall. This home's simple yet elegant floor plan is a dream for both homeowners and builders alike. Be sure to check out our other small house plans.