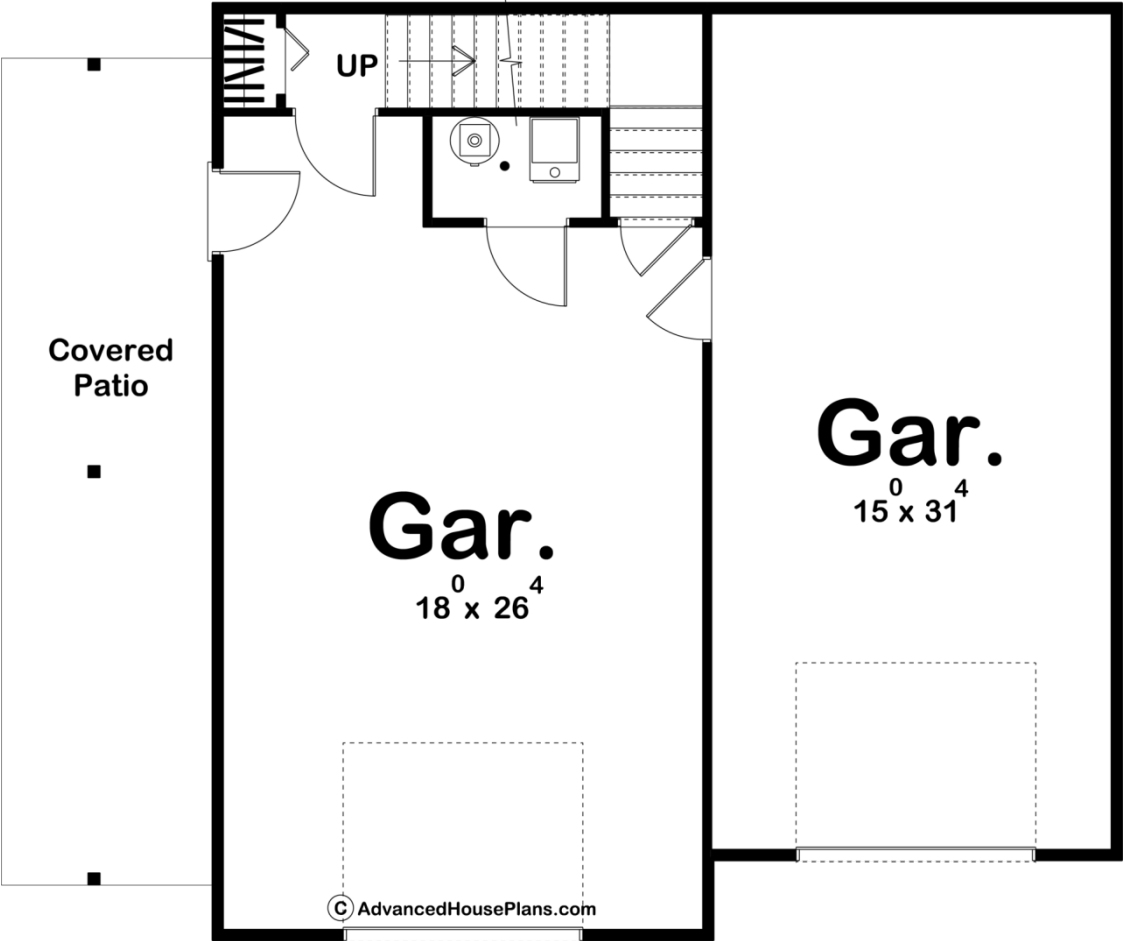
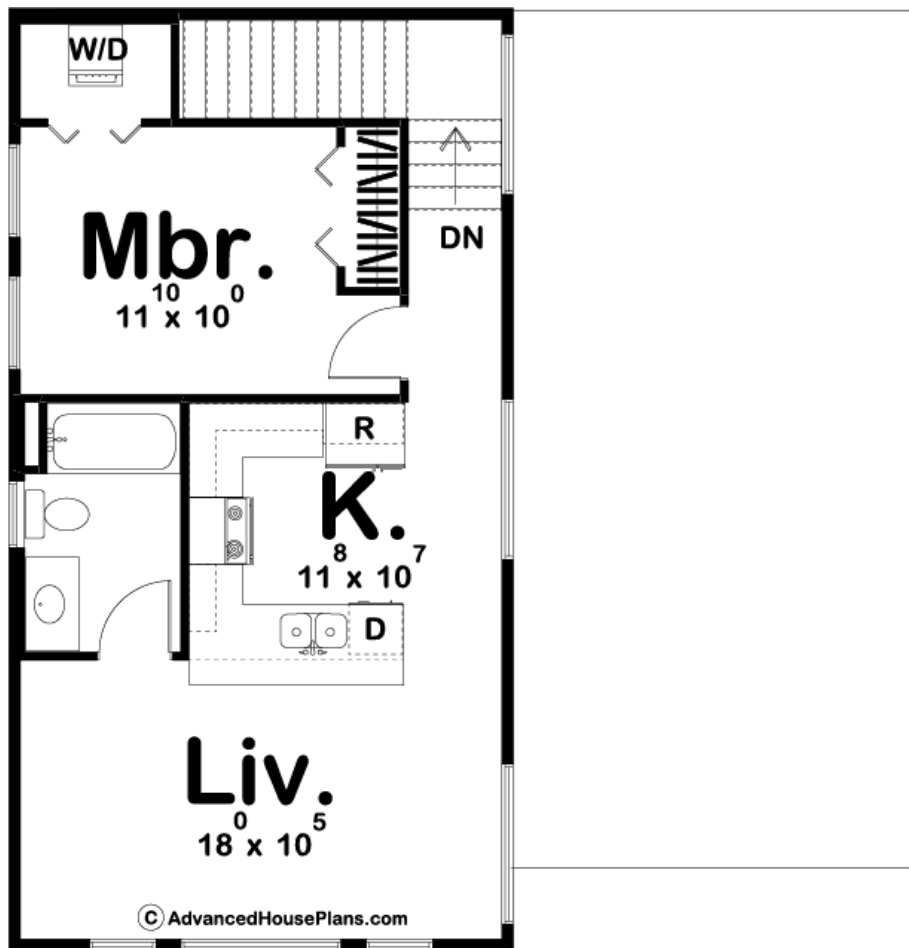




29751 - Sparrows Point Data Sheet

589 SQ FT	1 BEDS	1 BATHS	2 BAYS	42' 0" WIDE	35' 0" DEEP
--------------	-----------	------------	-----------	----------------	----------------





Construction Specs

Layout

Bedrooms	1
Bathrooms	1
Garage Bays	2

Square Footage

Second Level	589 Sq. Ft.
Garage	914 Sq. Ft.
Total Finished Area	589 Sq. Ft.

Exterior Dimensions

Width	42' 0"
Depth	35' 0"

Default Construction Stats

Stats are unique to the individual plan.

Foundation Type	Slab
Exterior Wall Construction	2x4

Roof Pitches	6/12 Primary, 3/12 Secondary
Main Wall Height	9'
Second Wall Height	9'

Plan Description

Modern Mountain styling gives the Sparrows Point Carriage House excellent curb appeal. On the garage level, you will find 2 deep garage bays that are separated by a wall. Upstairs, there is a great efficient 1 bedroom apartment. The kitchen in the apartment has a bar-height counter. On the left side of the Sparrows Point Carriage House, there is an excellent covered patio that provides a space for outdoor entertainment.