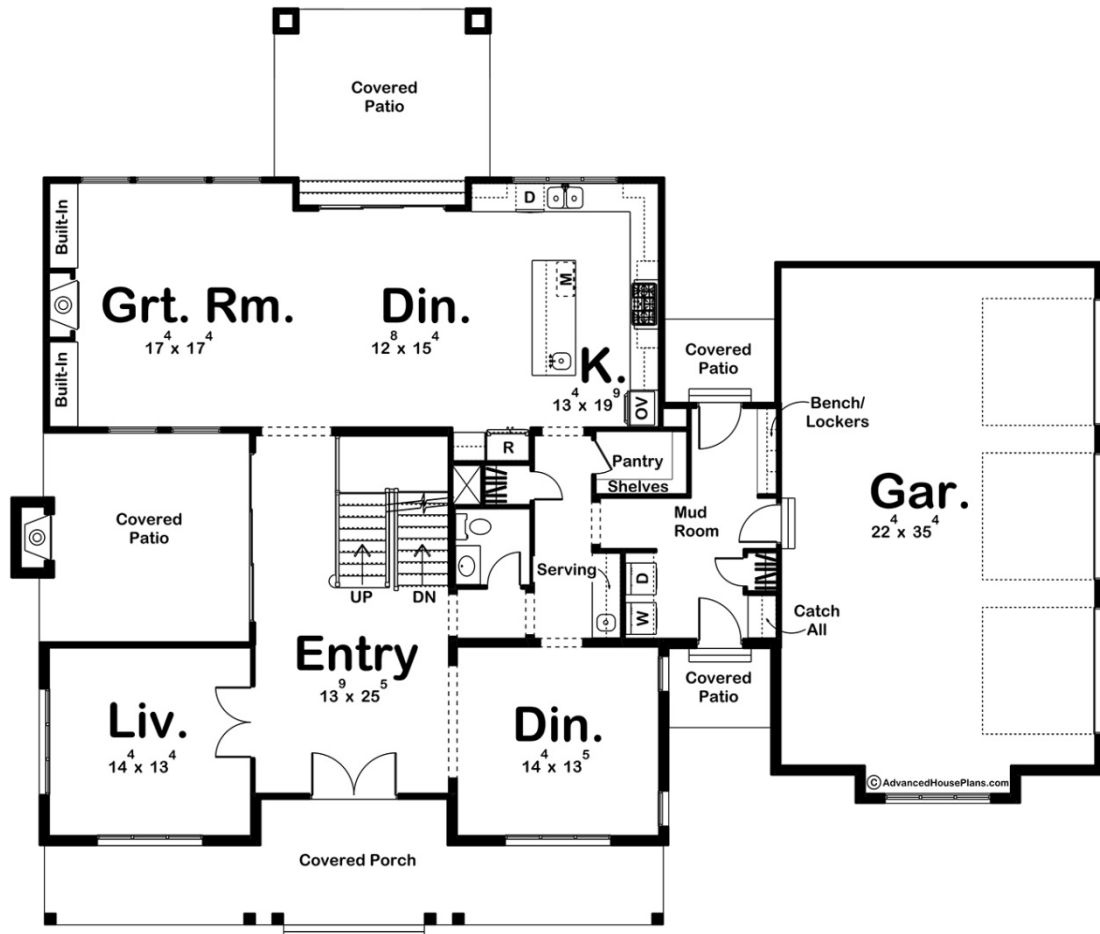
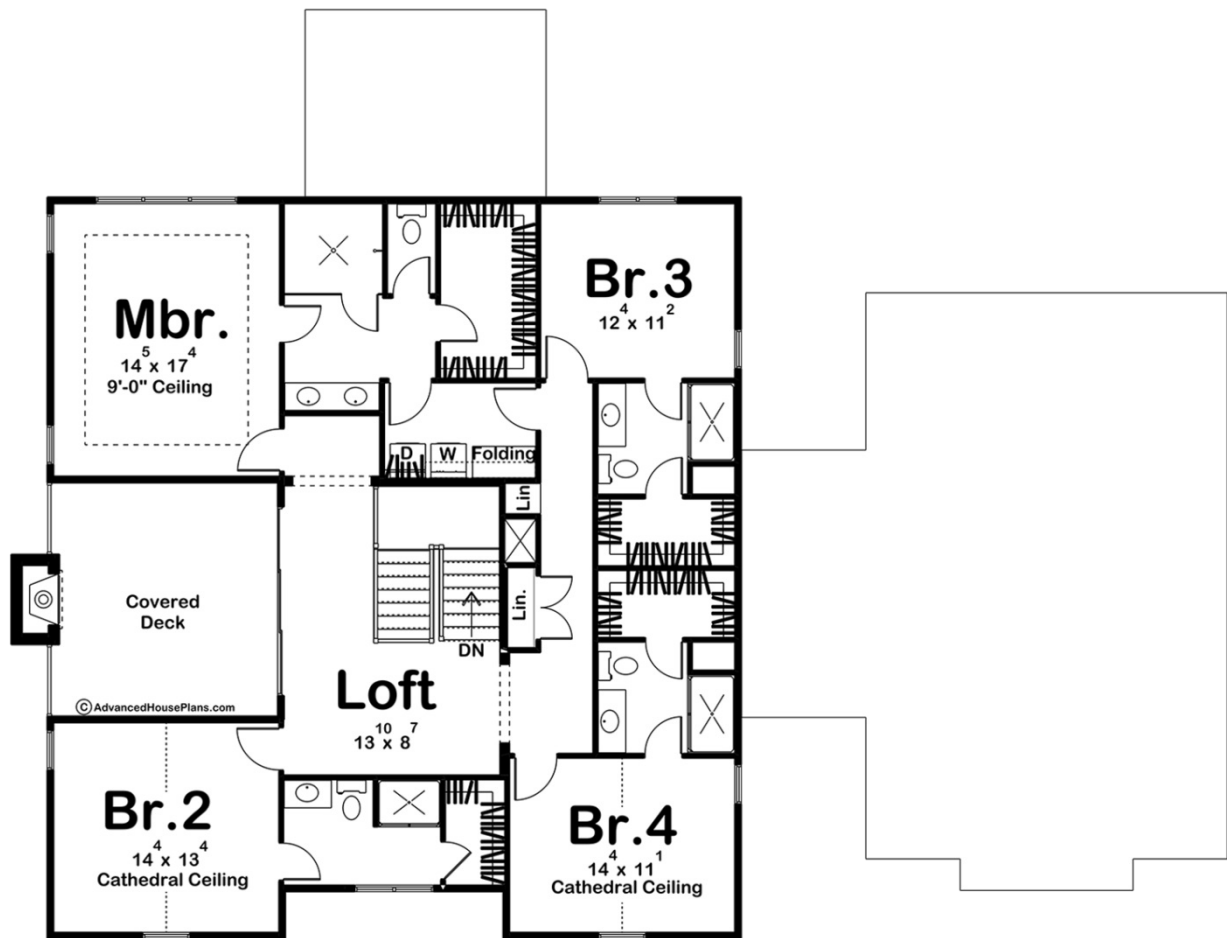




**30177 - Southbend Data Sheet**

3748 SQ FT	4 BEDS	5 BATHS	3 BAYS	77' 8" WIDE	65' 0" DEEP
---------------	-----------	------------	-----------	----------------	----------------





## Construction Specs

### Layout

Bedrooms	4
Bathrooms	5
Garage Bays	3

### Square Footage

Main Level	1924 Sq. Ft.
Second Level	1824 Sq. Ft.
Garage	848 Sq. Ft.
Total Finished Area	3748 Sq. Ft.

### Exterior Dimensions

Width	77' 8"
Depth	65' 0"

### Default Construction Stats

*Stats are unique to the individual plan.*

Foundation Type	Basement
-----------------	----------

Exterior Wall Construction	2x4
Roof Pitches	8/12 Primary, 12/12 4/12 Secondaries
Foundation Wall Height	9'
Main Wall Height	10'
Second Wall Height	8'

## Plan Description

The Southbend is a stunning 2-story modern farmhouse plan. The exterior combines board and batten siding with wood accents, brick, and metal roofing to give the home wonderful curb appeal. A large front covered porch invites guests into the home. One step through a set of french doors, and you'll find yourself in the home's entry. To the left of the entryway, you'll find a formal living room. To the right of the entryway, you'll find a large formal dining room with access to the kitchen through a hallway with a serving area. The kitchen, a second dining area, and the great room are arranged in a wide-open layout. The kitchen includes a large island with a microwave, a snack bar, and a prep sink. A large walk-in pantry is situated out of sight behind the kitchen. The great room is warmed by a fireplace flanked by built-in bookshelves. A triple glass sliding door leads to the rear covered patio from the dining area. The second floor is where you will find all of your bedrooms. The master suite includes a bedroom that lies under a decorative trayed ceiling. The master bathroom has a massive walk-in shower, a walk-in closet, and his/her vanities. The master bathroom also includes access to the laundry room. Bedrooms 2, 3, and 4 all have access to their very own bathroom and walk-in closet. A convenient loft creates a great place for the kids to play. The loft opens up to a covered deck through a triple glass sliding door. Back on the main floor, the home's side-load 3-car garage accesses the home through a convenient mud room that includes a bench and lockers.