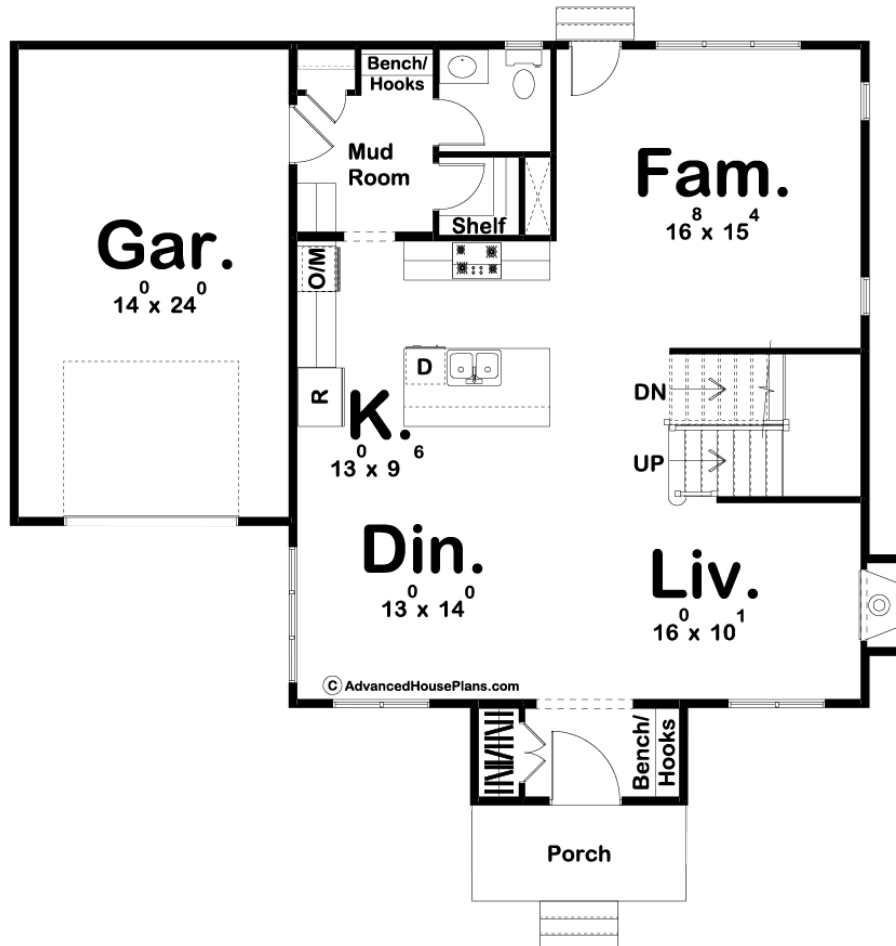
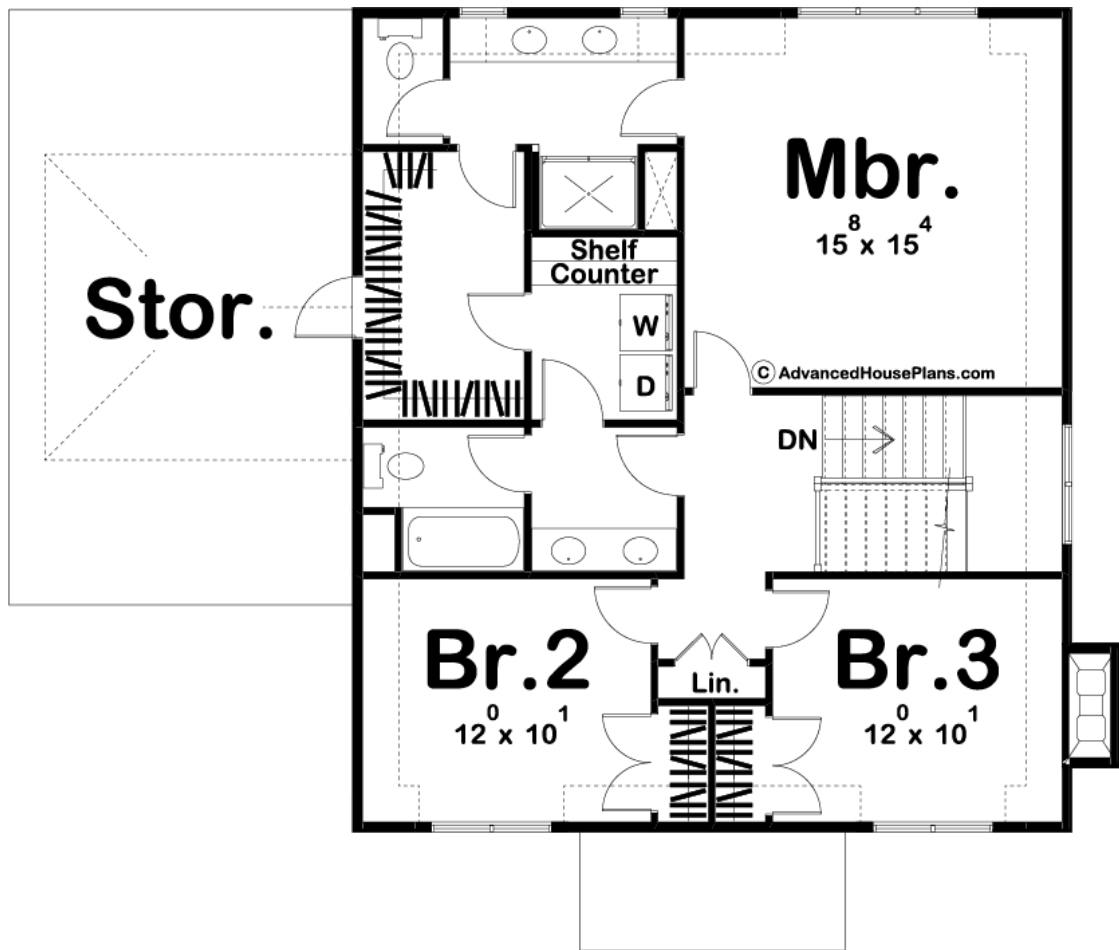




## 29754 - Sorensen Data Sheet

1990 SQ FT	3 BEDS	3 BATHS	1 BAYS	46' 0" WIDE	39' 0" DEEP
---------------	-----------	------------	-----------	----------------	----------------





## Construction Specs

### Layout

Bedrooms	3
Bathrooms	3
Garage Bays	1

### Square Footage

Main Level	1058 Sq. Ft.
Second Level	932 Sq. Ft.
Garage	353 Sq. Ft.
Total Finished Area	1990 Sq. Ft.

### Exterior Dimensions

Width	46' 0"
Depth	39' 0"

### Default Construction Stats

*Stats are unique to the individual plan.*

Foundation Type	Basement
-----------------	----------

Exterior Wall Construction	2x4
Roof Pitches	10/12 Primary, 16/12 Secondary
Foundation Wall Height	9'
Main Wall Height	9'
Second Wall Height	8'

## Plan Description

The Sorensen plan is a charming Cottage style plan that takes you back to a time when houses were built with uniqueness and character. The high pitched roof and stucco give this plan an old-world look with modern amenities. As you step into the home, you'll find yourself in an excellent entryway that includes a coat closet and a bench. Just off the entryway is a living room that is warmed by a fireplace and flows seamlessly to the kitchen and dining room. The kitchen has a wonderful walk-in pantry and an island with a snack bar. Upstairs, you will find the home's bedrooms. The master bathroom includes his/her vanities and a wonderful walk-in closet with access to the home's laundry room. Bedrooms 2 and 3 share a centrally located hall bathroom that also has access to the laundry room. Back on the main floor, the house's 1 car garage accesses the home through a convenient mudroom with a bench and lockers.