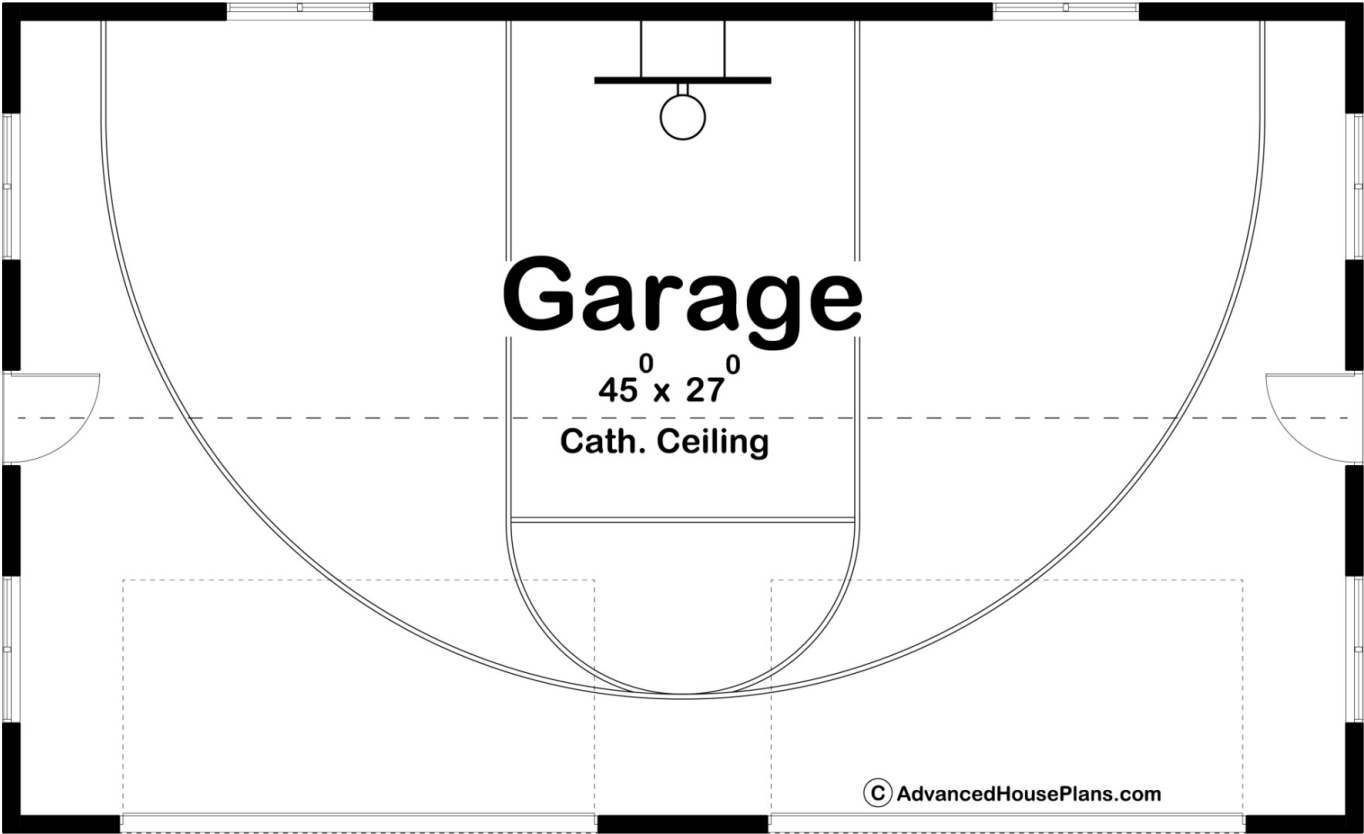




29364 - Sooter Data Sheet

0	0	0	4	46' 0"	28' 0"
SQ FT	BEDS	BATHS	BAYS	WIDE	DEEP



Construction Specs

Layout

Garage Bays

Square Footage	
Garage	1288 Sq. Ft.
Exterior Dimensions	
Width	46' 0"
Depth	28' 0"
Ridge Height	26'
<i>Calculated from main floor line</i>	
Default Construction Stats	
<i>Stats are unique to the individual plan.</i>	
Foundation Type	Slab
Exterior Wall Construction	2x6
Roof Pitches	8/12 Primary
Main Wall Height	16'

Plan Description

Sooter is a 4 car garage on slab with 16' tall walls. The space is perfect for a half-court sized basketball court but works just as well as a workshop where tall spaces are required. The plan has clerestory windows all around to let in plenty of daylight.