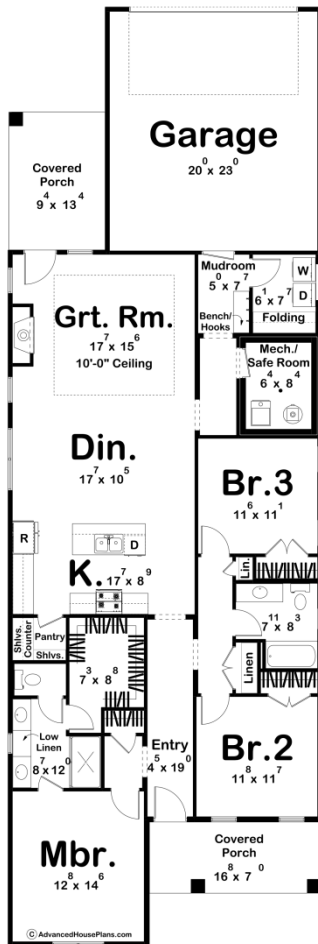




30553 - Silverbridge Data Sheet

1729 SQ FT	3 BEDS	2 BATHS	2 BAYS	30' 0" WIDE	90' 0" DEEP
---------------	-----------	------------	-----------	----------------	----------------



Construction Specs

Layout

Bedrooms

Bathrooms	2
Garage Bays	2
Square Footage	
Main Level	1729 Sq. Ft.
Covered Area	241 Sq. Ft.
Garage	482 Sq. Ft.
Total Finished Area	1729 Sq. Ft.
Exterior Dimensions	
Width	30' 0"
Depth	90' 0"
Ridge Height <i>Calculated from main floor line</i>	24' 0"
Default Construction Stats <i>Stats are unique to the individual plan.</i>	
Foundation Type	Slab
Exterior Wall Construction	2x4
Roof Pitches	Primary 10/12, Secondary 6/12
Main Wall Height	9'

Plan Description

Imagine a charming modern farmhouse with a mix of board and batten siding, natural stone accents, and a welcoming covered porch on the front elevation. Large windows and a glass front door adorn the exterior, flooding the interior with natural light. The simple yet elegant gable roof adds to the cozy aesthetic of the Silverbridge. Upon entering, a spacious foyer greets you, leading into the open concept main area. The great room, bright and airy with a cozy fireplace, seamlessly flows into the kitchen and dining areas, creating an ideal space for both entertaining and daily living. The modern, functional kitchen boasts a large island doubling as a breakfast bar and a walk-in pantry. Adjacent to the kitchen, the dining area offers ample space for a large dining table. The master suite serves as a spacious retreat with a large bedroom overlooking the front yard. The en-suite bathroom includes dual vanities, a walk-in shower, and a walk-in closet. Two additional bedrooms provide flexibility for use as guest rooms, children's rooms, or even a home office. A shared bathroom, conveniently located between the secondary bedrooms, features a tub/shower combo and a single vanity. The 2-car rear garage preserves the curb appeal of the front elevation. This home also includes a mudroom space connecting to the main living area. Ideal for those with a narrow lot, the Silverbridge perfectly balances style, comfort, and functionality, making it an ideal choice for modern living.