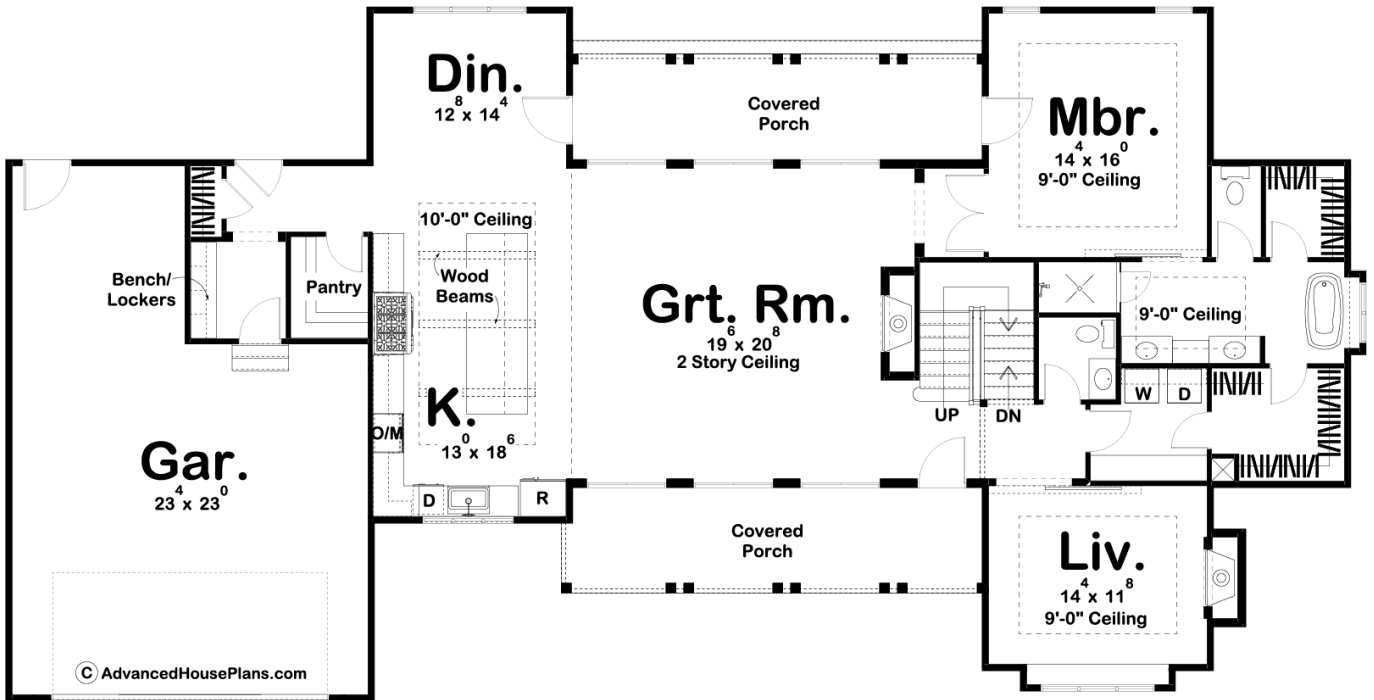
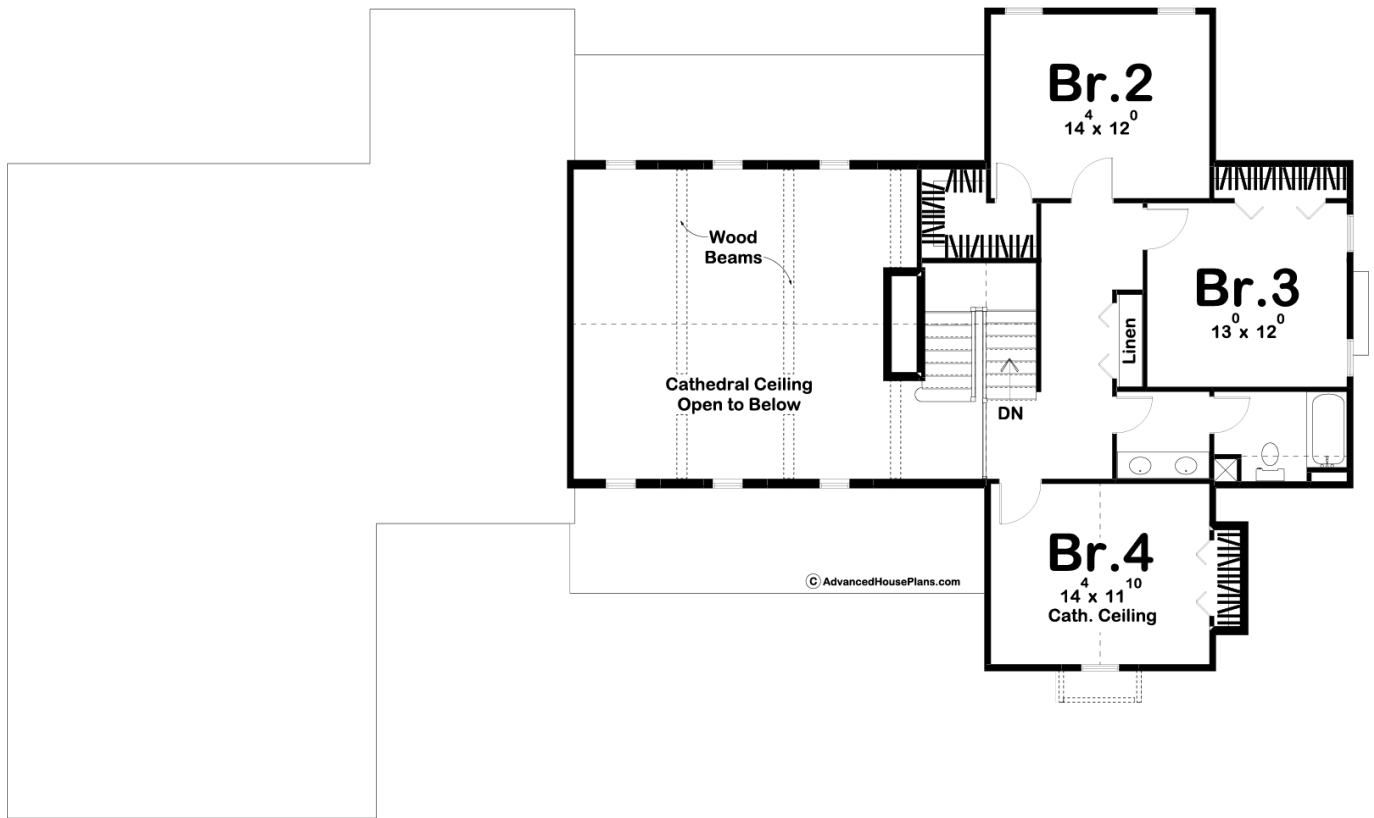




**29652 - Rosewood Data Sheet**

2857 SQ FT	4 BEDS	3 BATHS	2 BAYS	89' 0" WIDE	46' 0" DEEP
---------------	-----------	------------	-----------	----------------	----------------





## Construction Specs

### Layout

Bedrooms	4
Bathrooms	3
Garage Bays	2

### Square Footage

Main Level	2009 Sq. Ft.
Second Level	848 Sq. Ft.
Garage	700 Sq. Ft.
Total Finished Area	2857 Sq. Ft.

### Exterior Dimensions

Width	89' 0"
Depth	46' 0"
Ridge Height	30'
<i>Calculated from main floor line</i>	

## Default Construction Stats

*Stats are unique to the individual plan.*

Foundation Type	Basement
Exterior Wall Construction	2x4
Roof Pitches	12/12 Primary
Foundation Wall Height	9'
Main Wall Height	9'
Second Wall Height	8'

## Plan Description

The curb appeal of this 1.5 story house plan is highlighted by a covered front porch, board and batten siding and a metal roof giving this plan a Modern Farmhouse look. Inside, immediate impressions are made by a soaring 2-story-high, wood-beamed cathedral ceiling in the great room. A trio of tall windows complements both the front and rear walls of the great room, offering views through the front porch and rear porch. The kitchen, with expansive work island, lies beneath its own beamed ceiling and is open to the dining area. Away from the living areas, the main floor's master suite features his and her walk-in closets, and his and her vanities in the bath. The suite can be entered either through an alcove off the great room or through a more circuitous route from the laundry area. Upstairs, bedroom 2, 3 and 4 share a centrally located bath. Bedroom 4 receives an added sense of space from a tall cathedral ceiling. Back on the main level, the generously proportioned 2-car garage includes ample space for a workshop. It accesses the home through a mudroom, complete with a bench and lockers.