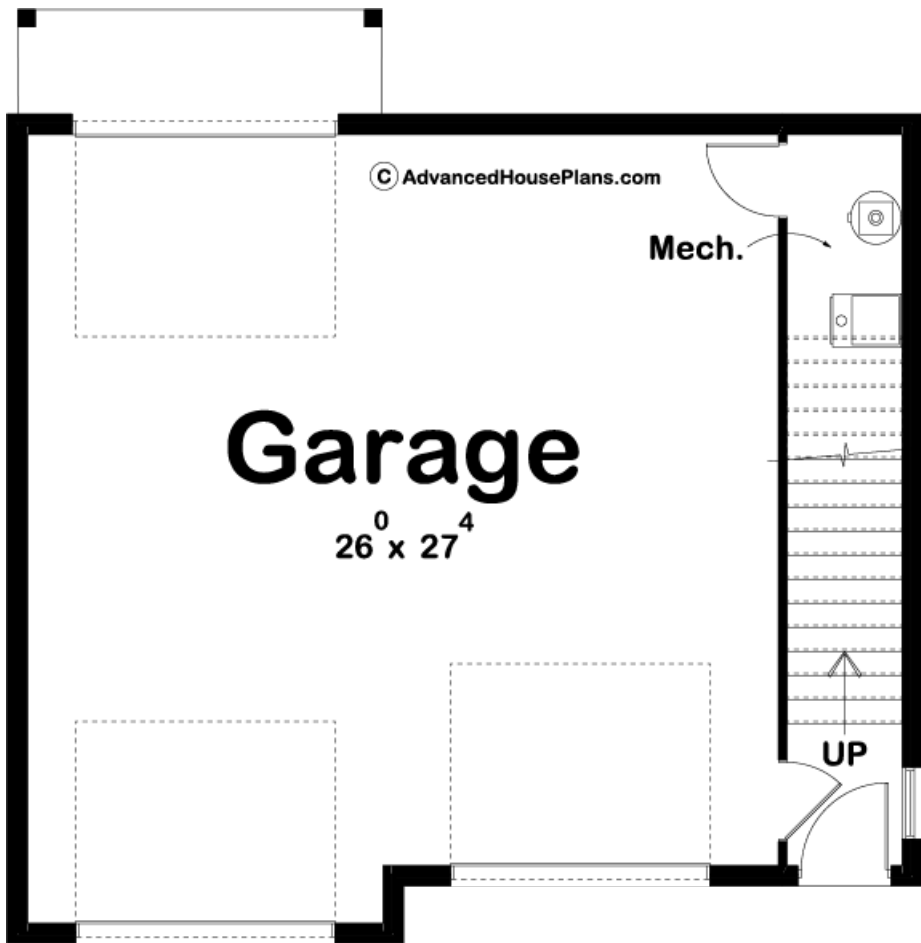
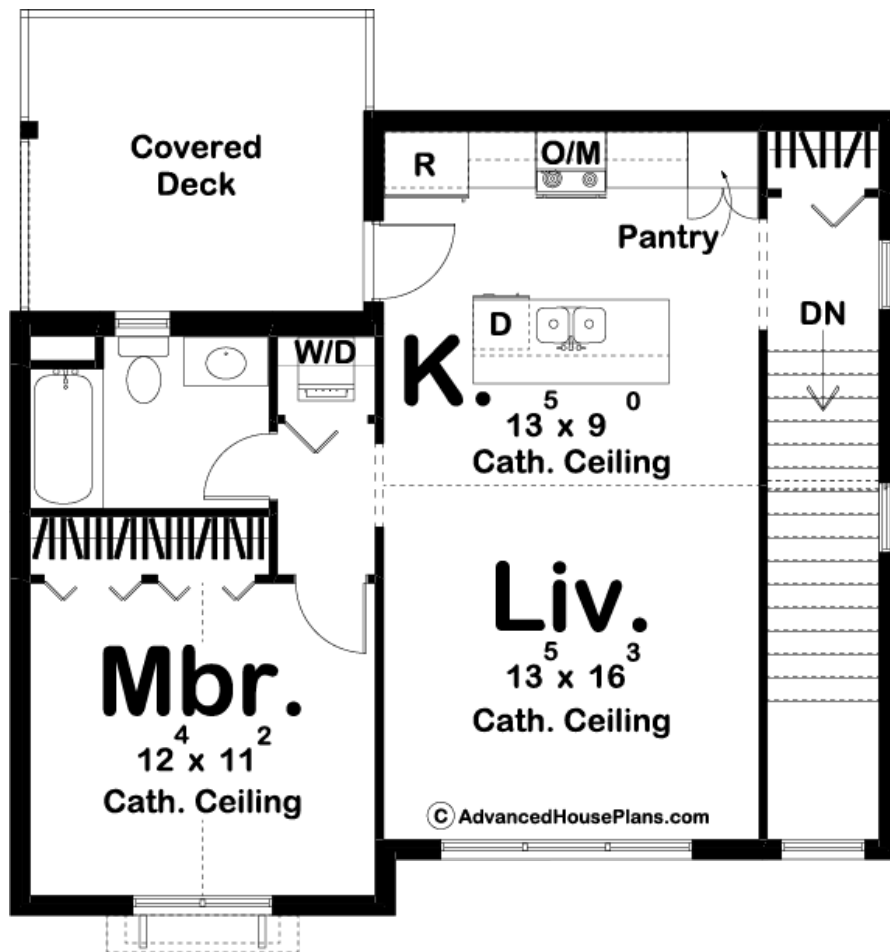




29749 - Riesling Data Sheet

716 SQ FT	1 BEDS	1 BATHS	2 BAYS	31' 0" WIDE	32' 0" DEEP
--------------	-----------	------------	-----------	----------------	----------------





Construction Specs

Layout

Bedrooms	1
Bathrooms	1
Garage Bays	2

Square Footage

Second Level	716 Sq. Ft.
Garage	832 Sq. Ft.
Total Finished Area	716 Sq. Ft.

Exterior Dimensions

Width	31' 0"
Depth	32' 0"

Default Construction Stats

Stats are unique to the individual plan.

Foundation Type	Slab
Exterior Wall Construction	2x4

Roof Pitches	6/12 Primary, 10/12 Secondary
Main Wall Height	9'
Second Wall Height	8'

Plan Description

On the main level of this beautiful Carriage House, you will find a 2 car garage that includes a drive-through stall. Upstairs, there is a fantastic 1 bedroom apartment. The cathedral ceilings make the living space and master bedroom feel open. The kitchen includes a pantry and a kitchen island with a snack bar. There is a perfect rear covered deck for outdoor entertainment.