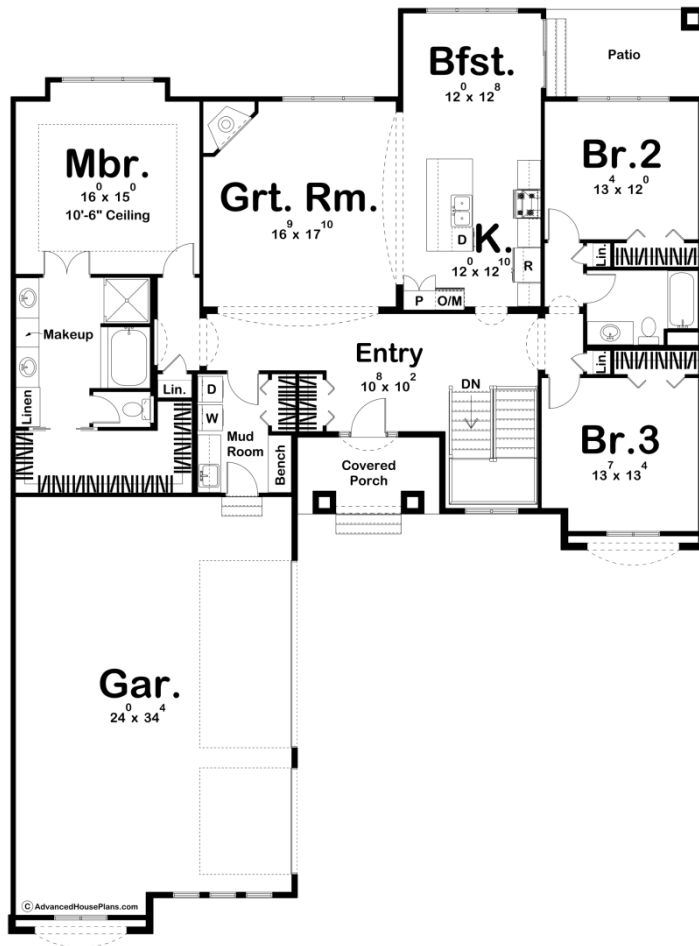




29079 - Prescott Data Sheet

2165 SQ FT	3 BEDS	2 BATHS	3 BAYS	60' 0" WIDE	79' 0" DEEP
---------------	-----------	------------	-----------	----------------	----------------



Construction Specs

Layout

Bedrooms

Bathrooms	2
Garage Bays	3
Square Footage	
Main Level	2165 Sq. Ft.
Garage	877 Sq. Ft.
Total Finished Area	2165 Sq. Ft.
Exterior Dimensions	
Width	60' 0"
Depth	79' 0"
Ridge Height <i>Calculated from main floor line</i>	19'
Default Construction Stats <i>Stats are unique to the individual plan.</i>	
Foundation Type	Basement
Exterior Wall Construction	2x4
Roof Pitches	6/12
Foundation Wall Height	9'
Main Wall Height	10'

Plan Description

A tasteful blend of textures enhances the classic Mediterranean styling of this 2,165 sq. ft., 1-story house plan. Columns flank the covered front porch, where upon entrance, guests are treated to expansive views into the great room, with its corner fireplace and trio of windows to the rear. Just off the great room, the kitchen and breakfast area lie open for unimpeded entertaining. The kitchen features a sizeable island work area and pantry, while the sunny breakfast area accesses a rear deck. An alcove off of the reception area conceals the entrance to the master suite, where the bedroom is flooded with light from three large windows to the rear. The bath area includes his-and-her vanities, soaking tub, shower, compartmented toilet and roomy walk-in closet. Bedrooms 2 and 3 reside on the opposite side of the home and share a hall bath. A laundry room/mud room, complete with sink, built-in bench, and coat closet, intercepts foot traffic from the home's deep, interior side-load, 3-car garage.