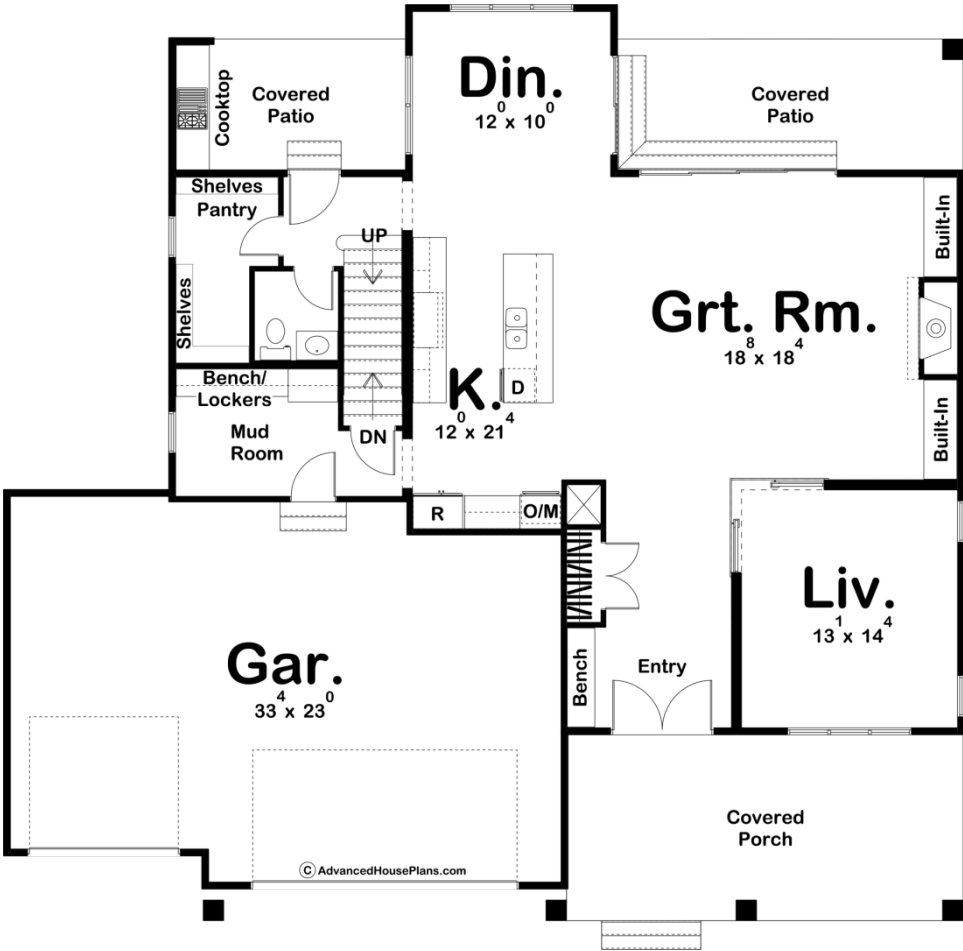
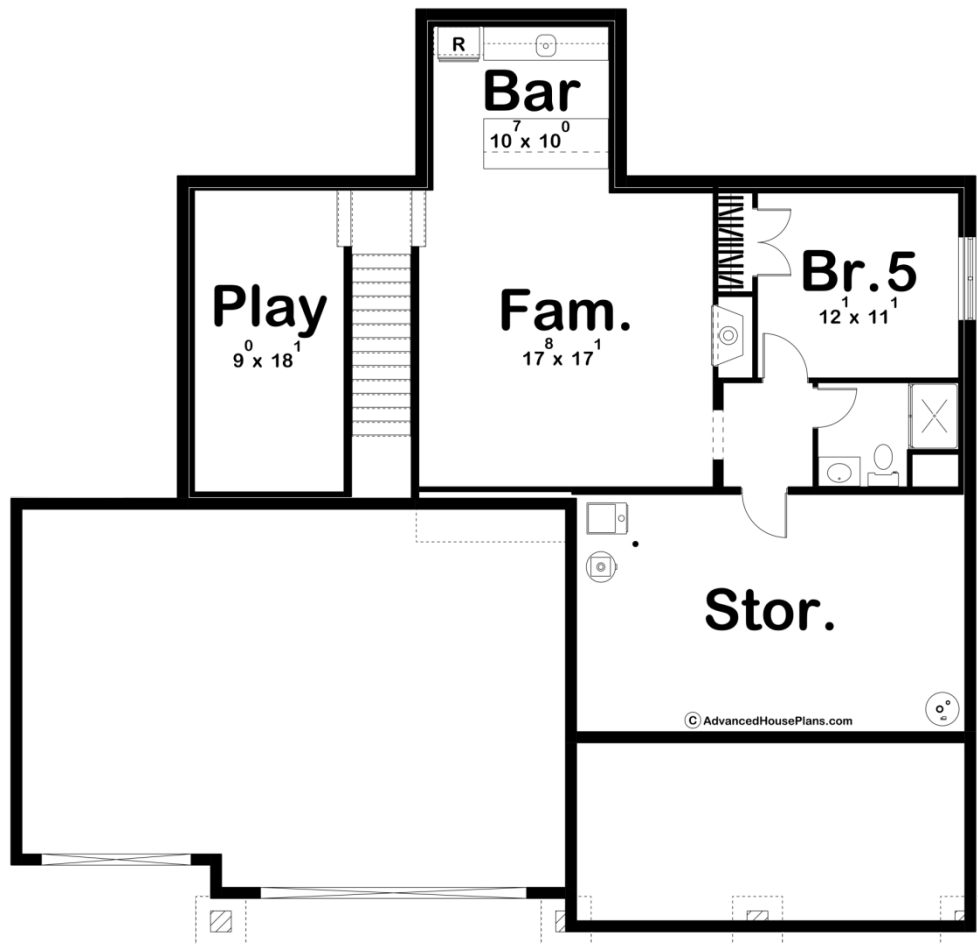
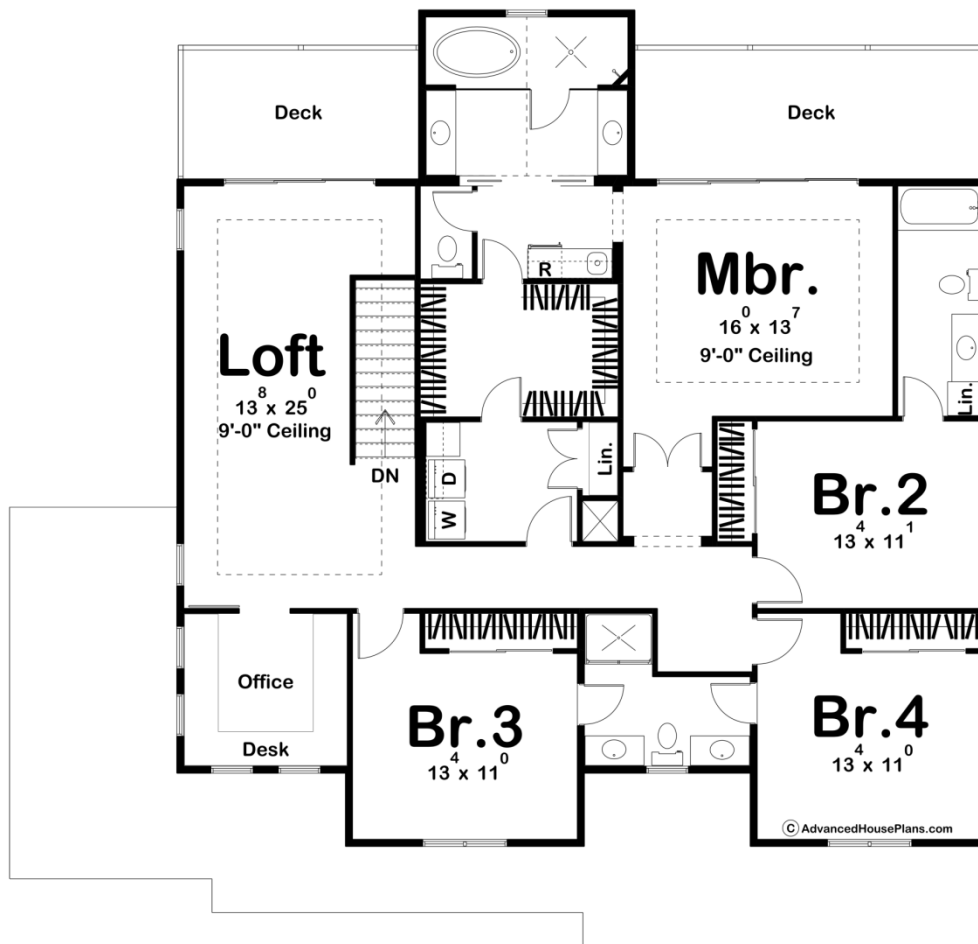




29910 - Poplar View Data Sheet

3327 SQ FT	4 BEDS	4 BATHS	3 BAYS	58' 0" WIDE	56' 0" DEEP
---------------	-----------	------------	-----------	----------------	----------------





Construction Specs

Layout	
Bedrooms	4
Bathrooms	4
Garage Bays	3
Square Footage	
Main Level	1441 Sq. Ft.
Second Level	1886 Sq. Ft.
Garage	753 Sq. Ft.
Total Finished Area	3327 Sq. Ft.
Exterior Dimensions	
Width	58' 0"
Depth	56' 0"
Ridge Height <i>Calculated from main floor line</i>	28'
Default Construction Stats	
<i>Stats are unique to the individual plan.</i>	
Foundation Type	Basement
Exterior Wall Construction	2x4
Roof Pitches	10/12 Primary, 6/12 Secondary
Foundation Wall Height	9'
Main Wall Height	9'
Second Wall Height	8'

Plan Description

A beautiful contrast of board and batten siding on the exterior gives the Poplar View a beautiful Modern Farmhouse curb appeal. This stunning home includes a ton of outdoor space including a front covered porch, 2 rear covered patios, an outdoor kitchen, and 2 decks on the upper level. The interior layout of this plan is equally amazing. As soon as you step foot in this home, you'll be blown away by the floorplan. A living room lies to the right of the entry and has a jaw-dropping corner door that allows you to keep the room wide open to the main living area or close it for complete privacy. The massive great room is warmed by a fireplace that is flanked by built-in bookshelves and is well lit with natural light from the beautiful door that leads to the covered patio. This homes amazing kitchen includes a large island and a large walk-in pantry. A door on the rear of the kitchen leads to an outdoor kitchen with a cooktop.Upstairs, you will find a stunning master bedroom that includes a wetroom with a soaking tub and shower, his/her vanities, and a large walk-in closet with access to the laundry room. A large sliding door leads from the master bedroom to a private deck. A loft area on the second floor also has a sliding door that leads to a deck. 3 additional bedrooms can be found on the second floor as well. Bedroom 2 has

its own bathroom while bedroom 3 and 4 share a bathroom. An optional finished basement adds 936 sq ft to the floor plan and includes a playroom, a bar, a large storage area, and an additional bedroom.