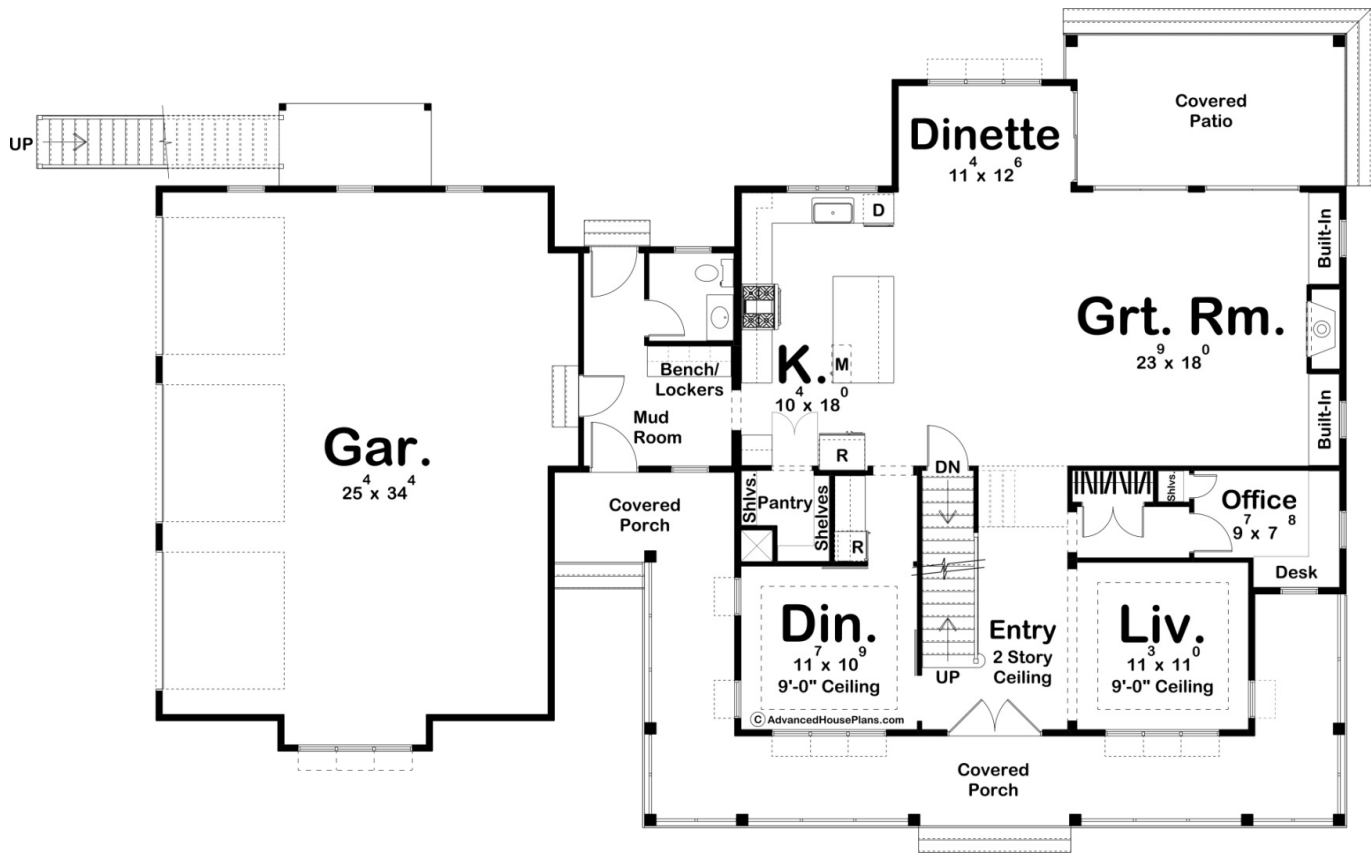
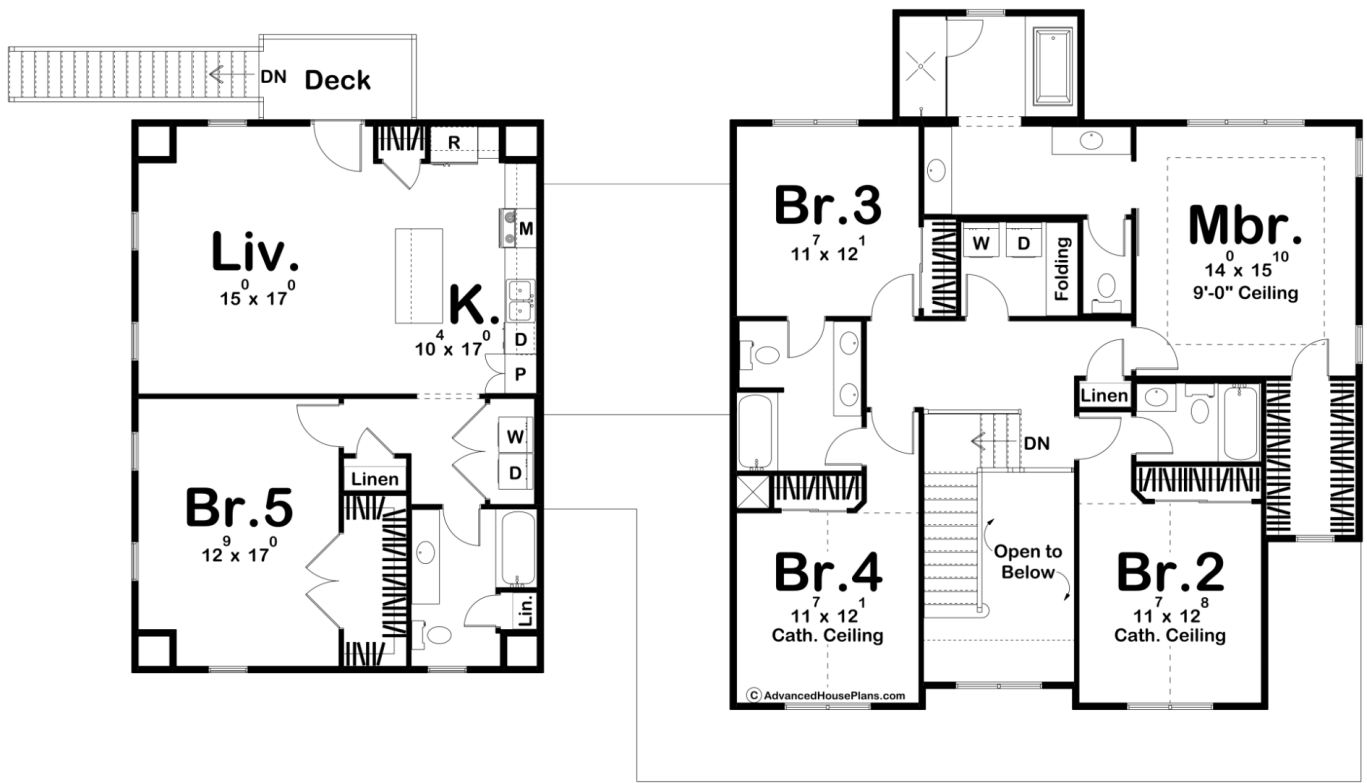




30104 - Pine Ridge Data Sheet

3880 SQ FT	5 BEDS	5 BATHS	3 BAYS	78' 0" WIDE	52' 0" DEEP
---------------	-----------	------------	-----------	----------------	----------------





Construction Specs

Layout

Bedrooms	5
Bathrooms	5
Garage Bays	3

Square Footage

Main Level	1620 Sq. Ft.
Second Level	2260 Sq. Ft.
Covered Area	618 Sq. Ft.
Garage	954 Sq. Ft.
Total Finished Area	3880 Sq. Ft.

Exterior Dimensions

Width	78' 0"
Depth	52' 0"
Ridge Height	31'
<i>Calculated from main floor line</i>	

Default Construction Stats

Stats are unique to the individual plan.

Foundation Type	Basement
Exterior Wall Construction	2x4
Roof Pitches	8/12 Primary, 4/12 6/12 Secondary
Foundation Wall Height	9'
Main Wall Height	9'
Second Wall Height	8'

Plan Description

If you are looking for curb appeal, look no further than the Pine Ridge plan. The exterior screams modern farmhouse with its wrap-around porch and attached side-load garage. Inside, the entryway is flanked by both the dining room and living room and has a 2 story ceiling. Further, into the home, an open kitchen and great room provide a great space for entertaining guests. The kitchen includes a farm sink, an island with a flush snack bar, and a walk-in pantry. The great room is warmed by a beautiful brick fireplace that is flanked by built-in cabinets. A wonderful dinette leads to a covered patio that is perfect for outdoor entertainment. On the upper level of this 2 story house, you will find 4 amazing bedrooms. The master suite includes a beautiful master bathroom complete with a walk-in shower, his/her vanities, and a whirlpool tub. Bedroom 2 has its own bathroom while bedrooms 3 and 4 share a convenient Jack and Jill bath. Back on the main level, the absolutely beautiful 3-car garage includes ample space. It accesses the home through a mudroom, complete with bench, lockers and a coat closet. A full 1 bedroom apartment can be found above the garage. The apartment includes a living area, a full kitchen with an island, a laundry room, a full bathroom, and a walk-in closet.