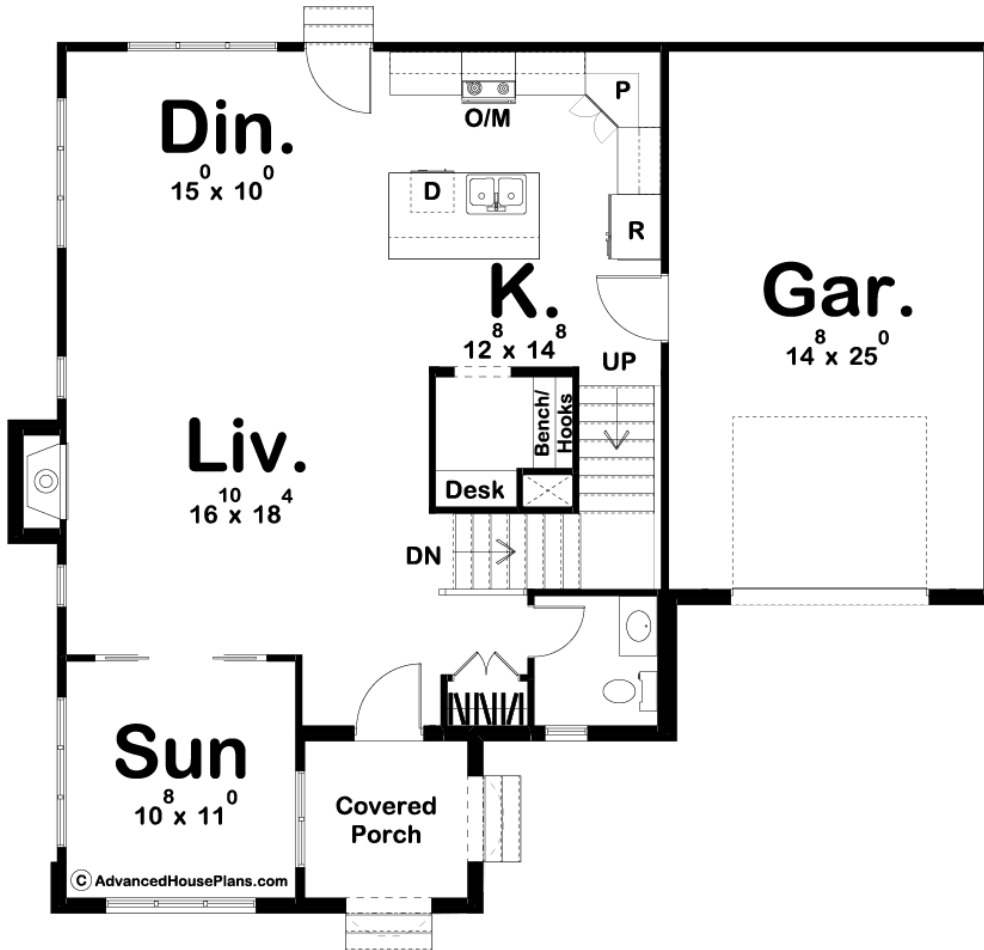
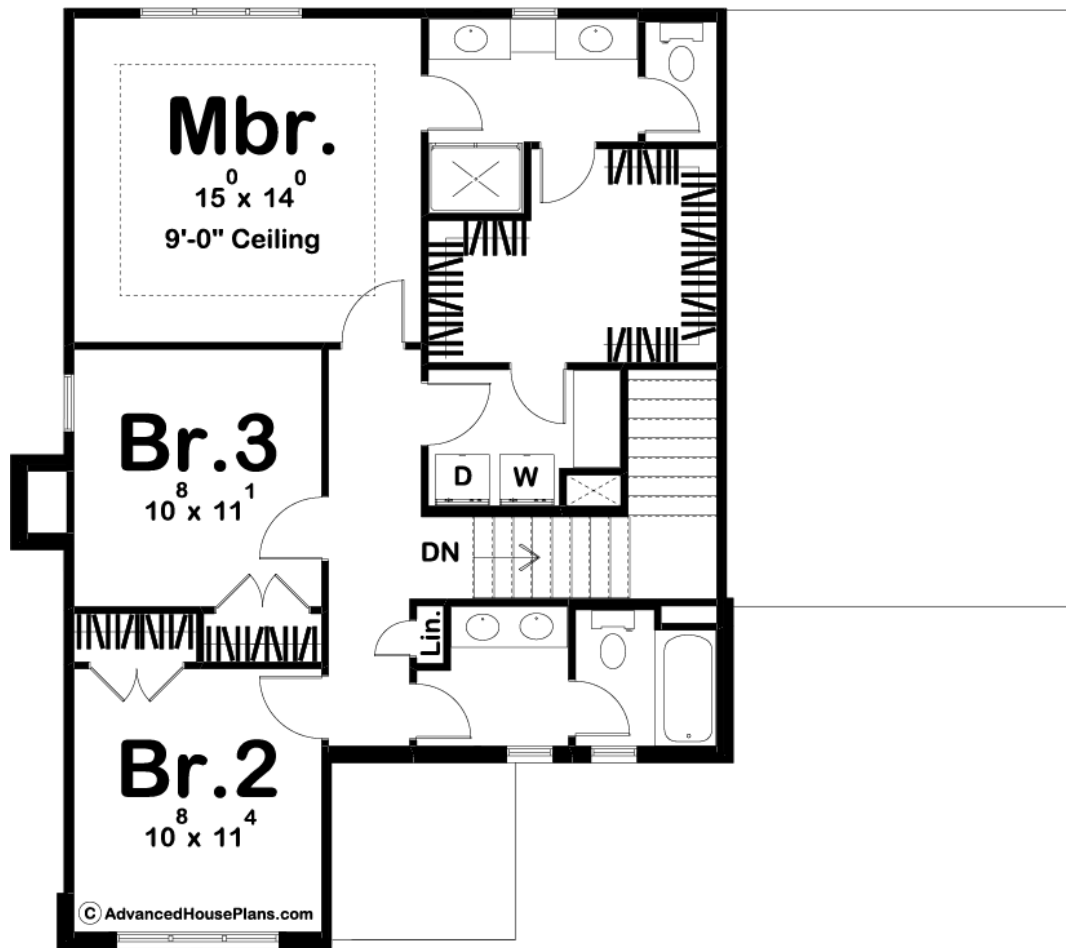




**29756 - Pershing Data Sheet**

1936 SQ FT	3 BEDS	3 BATHS	1 BAYS	46' 0" WIDE	40' 0" DEEP
---------------	-----------	------------	-----------	----------------	----------------





## Construction Specs

### Layout

Bedrooms	3
Bathrooms	3
Garage Bays	1

### Square Footage

Main Level	998 Sq. Ft.
Second Level	938 Sq. Ft.
Garage	394 Sq. Ft.
Total Finished Area	1936 Sq. Ft.

### Exterior Dimensions

Width	46' 0"
Depth	40' 0"

### Default Construction Stats

*Stats are unique to the individual plan.*

Foundation Type	Basement
-----------------	----------

Exterior Wall Construction	2x4
Roof Pitches	8/12 Primary, 16/12 6/12 Secondary
Foundation Wall Height	9'
Main Wall Height	9'
Second Wall Height	8'

## Plan Description

The Pershing plan gives off a cozy and inviting Tudor cottage look and has wonderful curb appeal. Inside the home, the floorplan feels larger than it is with its open concept. The living room, dining room, and kitchen flow seamlessly together. The living room is warmed by a fireplace. The kitchen includes a large island with a snack bar. There is also a sunroom on the front of the house to increase your homes entertainment space. Upstairs, you will find the bedrooms. The master suite includes his/her vanities and a large walk-in closet with access to the laundry room. Bedrooms 2 and 3 share a conveniently located hall bathroom that has a dual vanity.