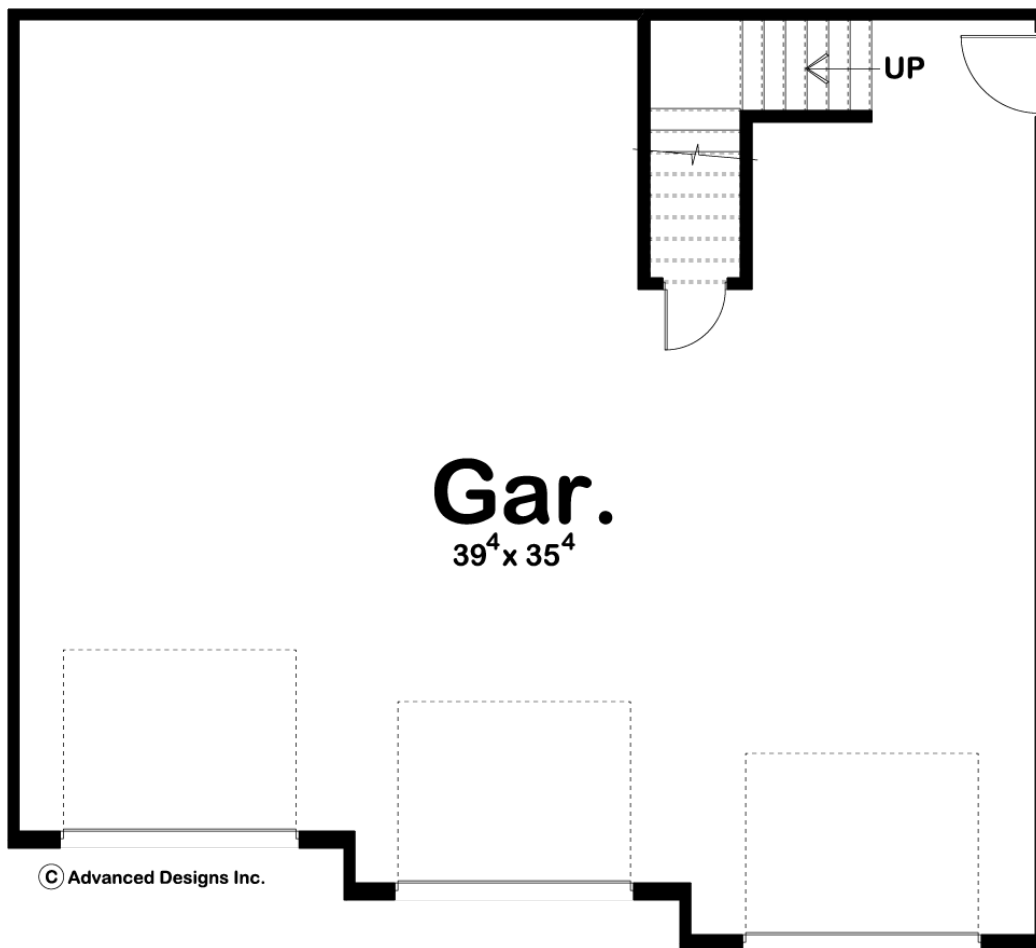
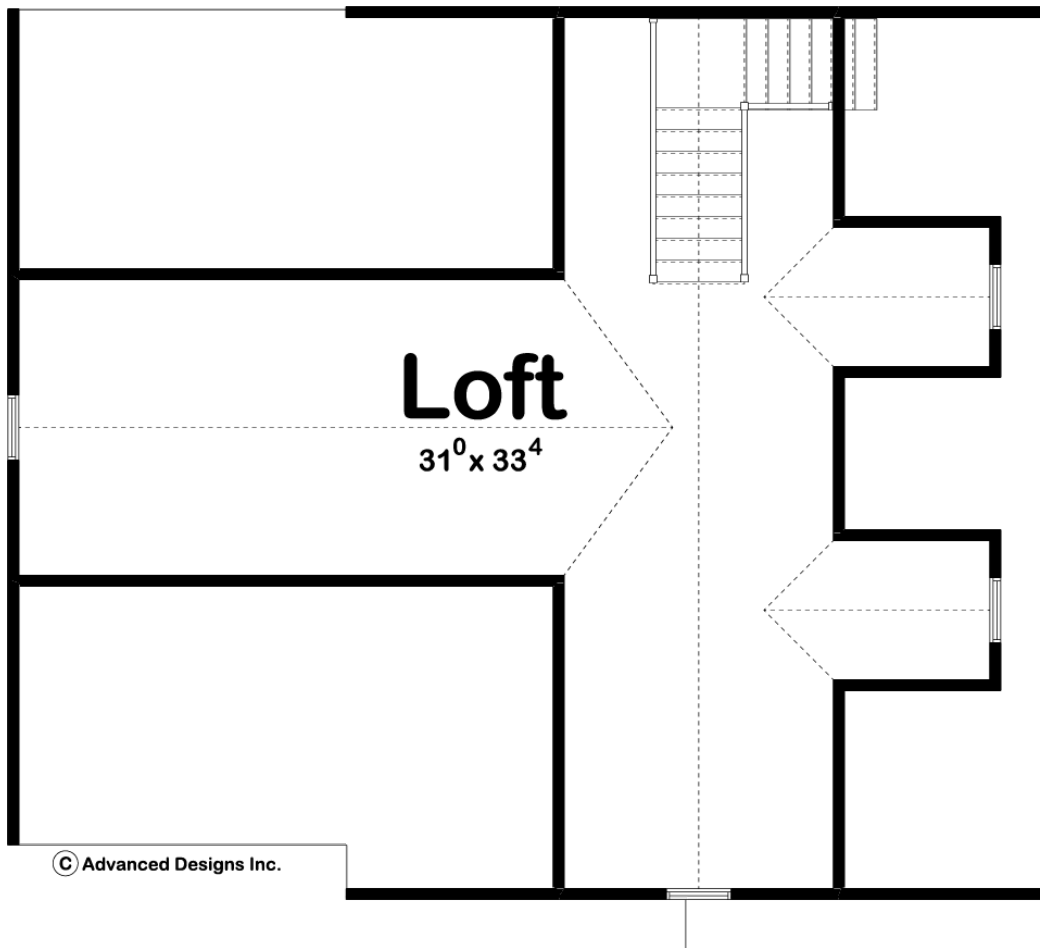




### 29236 - Perry Data Sheet

0 SQ FT	0 BEDS	0 BATHS	3 BAYS	40' 0" WIDE	36' 0" DEEP
------------	-----------	------------	-----------	----------------	----------------





## Construction Specs

### Layout

Garage Bays 3

### Square Footage

Garage 1362 Sq. Ft.

### Exterior Dimensions

Width 40' 0"

Depth 36' 0"

Ridge Height 24'  
*Calculated from main floor line*

### Default Construction Stats

*Stats are unique to the individual plan.*

Foundation Type Slab

Exterior Wall Construction 2x4

Roof Pitches 12/12 Primary

Main Wall Height 9'

## Plan Description

This is a 2 story traditional garage built on slab foundation. There is a spacious loft on the upper level.