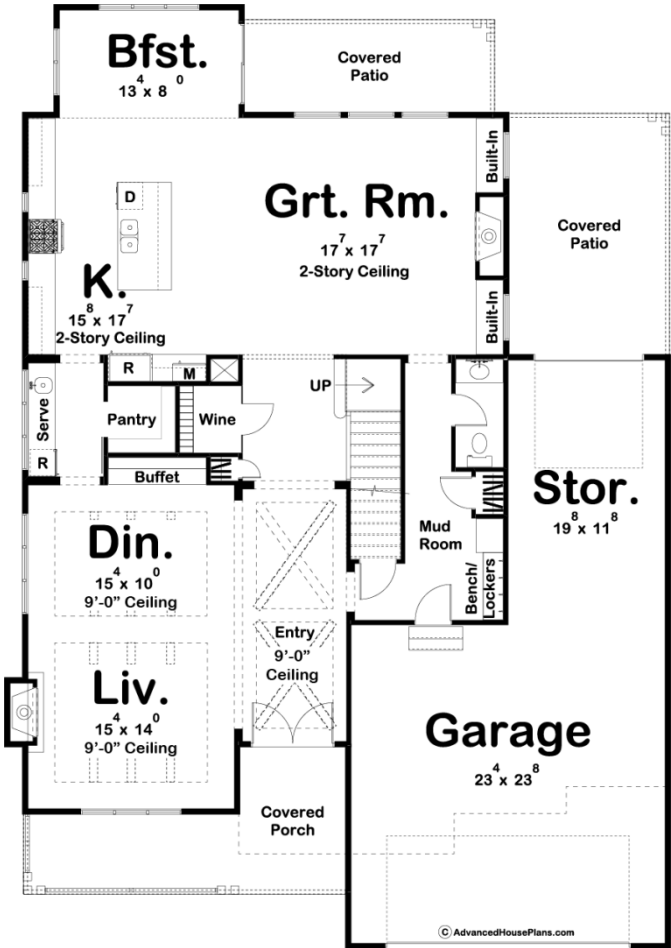
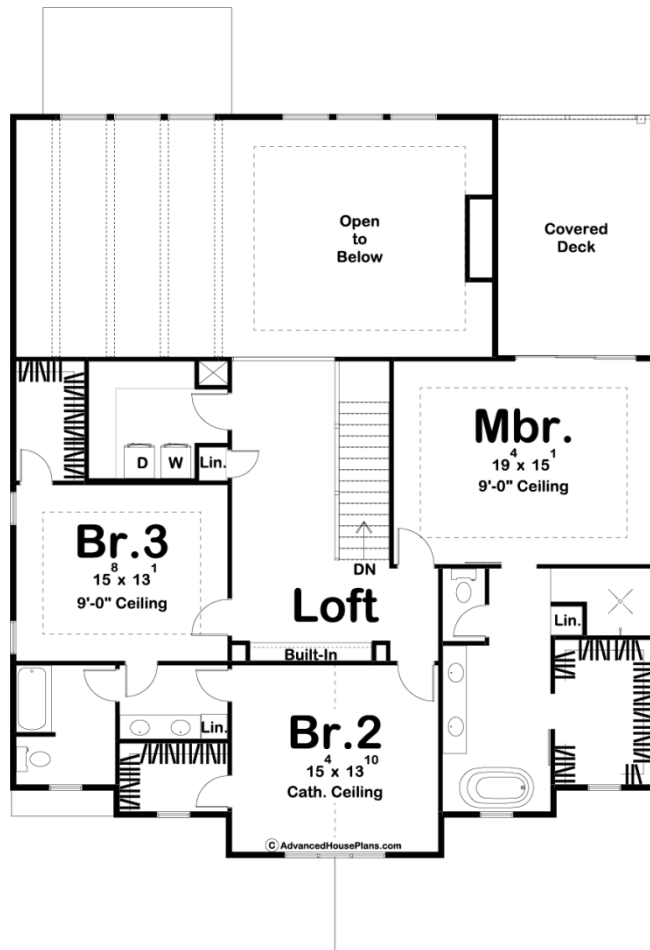




29799 - Pasadena Flats Data Sheet

| | | | | | |
|---------------|-----------|------------|-----------|----------------|----------------|
| 3378 SQ FT | 3 BEDS | 3 BATHS | 2 BAYS | 49' 4" WIDE | 70' 0" DEEP |
|---------------|-----------|------------|-----------|----------------|----------------|





Construction Specs

Layout

| | |
|-------------|---|
| Bedrooms | 3 |
| Bathrooms | 3 |
| Garage Bays | 2 |

Square Footage

| | |
|---------------------|--------------|
| Main Level | 1781 Sq. Ft. |
| Second Level | 1597 Sq. Ft. |
| Garage | 815 Sq. Ft. |
| Total Finished Area | 3378 Sq. Ft. |

Exterior Dimensions

| | |
|-------|--------|
| Width | 49' 4" |
| Depth | 70' 0" |

Default Construction Stats

Stats are unique to the individual plan.

| | |
|-----------------|----------|
| Foundation Type | Basement |
|-----------------|----------|

| | |
|----------------------------|------------------------------|
| Exterior Wall Construction | 2x4 |
| Roof Pitches | 5/12 Primary, 4/12 Secondary |
| Foundation Wall Height | 9' |
| Main Wall Height | 9' |
| Second Wall Height | 8' |

Plan Description

Our Pasadena Flats plan blends the classic farmhouse style with modern elements to create excellent curb appeal. The exterior blends natural wood elements with the classic board and batten siding and a lot of glass to finish off the unique look. You will be blown away when you step into the house as you stand in an excellent entryway under the exposed wood beams. Just off the entryway, you'll find the living room and dining room. The living room is warmed by a fireplace and also lies under exposed wood beams. Towards the rear of the main floor, you will be amazed by the kitchen and great room that feel massive with its soaring 2 story ceilings. The great room is warmed by a fireplace that is flanked by built-in bookshelves. The kitchen includes a large kitchen island and a walk-in pantry. Also on the main floor, is an amazing wine room. The bedrooms all reside on the second floor. The master suite includes his/her vanities, a soaking tub, and a large walk-in closet. Bedrooms 2 and 3 share a jack and jill bath and each has its own walk-in closet. Back on the main floor, the oversized 2 car garage includes a large storage area with an overhead door that leads to the rear covered patio. The garage accesses the home through a convenient mudroom that includes a bench and lockers as well as a coat closet.