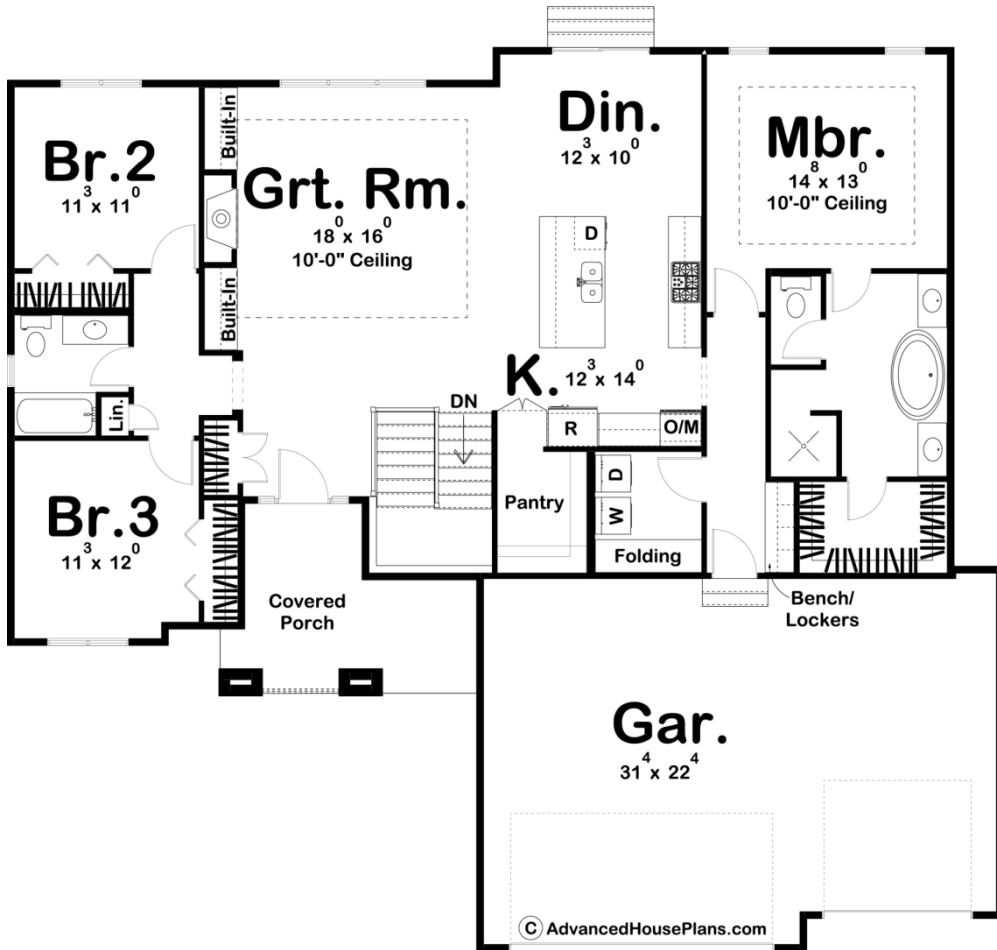




29676 - Pacific Woods Data Sheet

1824 SQ FT	3 BEDS	2 BATHS	3 BAYS	60' 8" WIDE	55' 0" DEEP
---------------	-----------	------------	-----------	----------------	----------------



Construction Specs

Layout

Bedrooms

Bathrooms	2
-----------	---

Garage Bays	3
-------------	---

Square Footage

Main Level	1824 Sq. Ft.
------------	--------------

Garage	703 Sq. Ft.
--------	-------------

Total Finished Area	1824 Sq. Ft.
---------------------	--------------

Exterior Dimensions

Width	60' 8"
-------	--------

Depth	55' 0"
-------	--------

Default Construction Stats

Stats are unique to the individual plan.

Foundation Type	Basement
-----------------	----------

Exterior Wall Construction	2x4
----------------------------	-----

Roof Pitches	4/12
--------------	------

Foundation Wall Height	9'
------------------------	----

Main Wall Height	9'
------------------	----

Plan Description

The Pacific Woods house plan is a Modern Prairie Ranch with a functional floor plan and unique exterior. It combines cedar and stone to create an elegant modern exterior. Doesn't it look great? The Pacific Woods features an open floor plan that feels huge! It's got a deep walk-in pantry, hidden by cabinet-faced doors, and a great laundry room with a folding counter to keep your life, and this beautiful home, organized. The Master Suite is generously sized with a shower and spa tub and spacious walk-in closet. The great room is warmed by a fireplace that is flanked by built-in bookshelves. The great room is well lit by natural light through a window to the back yard. Bedrooms 2 and 3 share a conveniently located hall bath. You also get a 3 car garage, which is hard to find on homes this size.