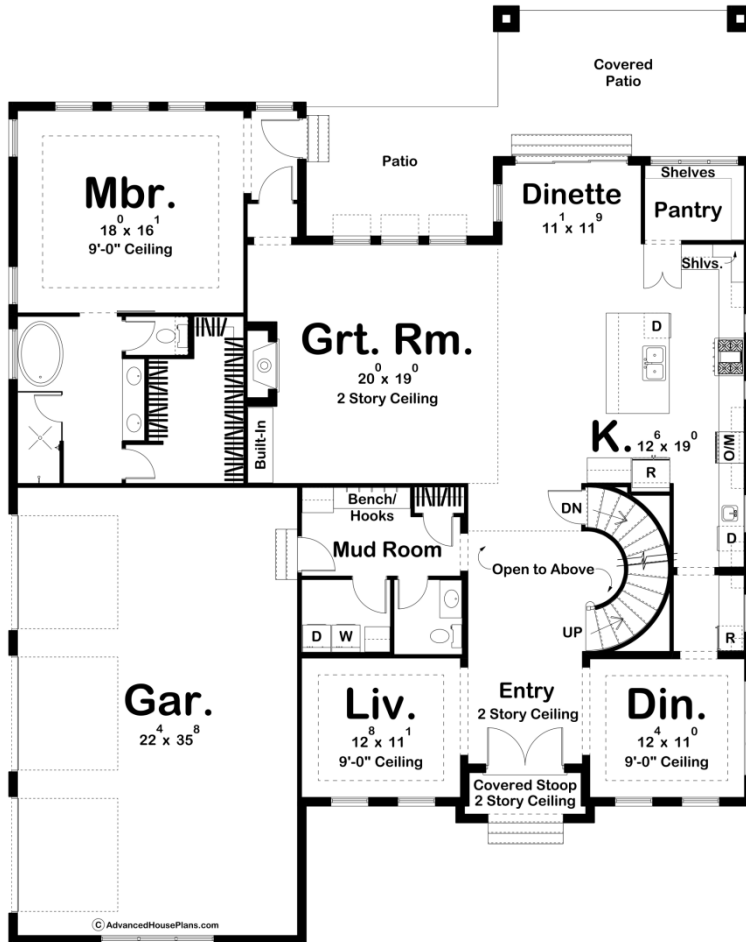
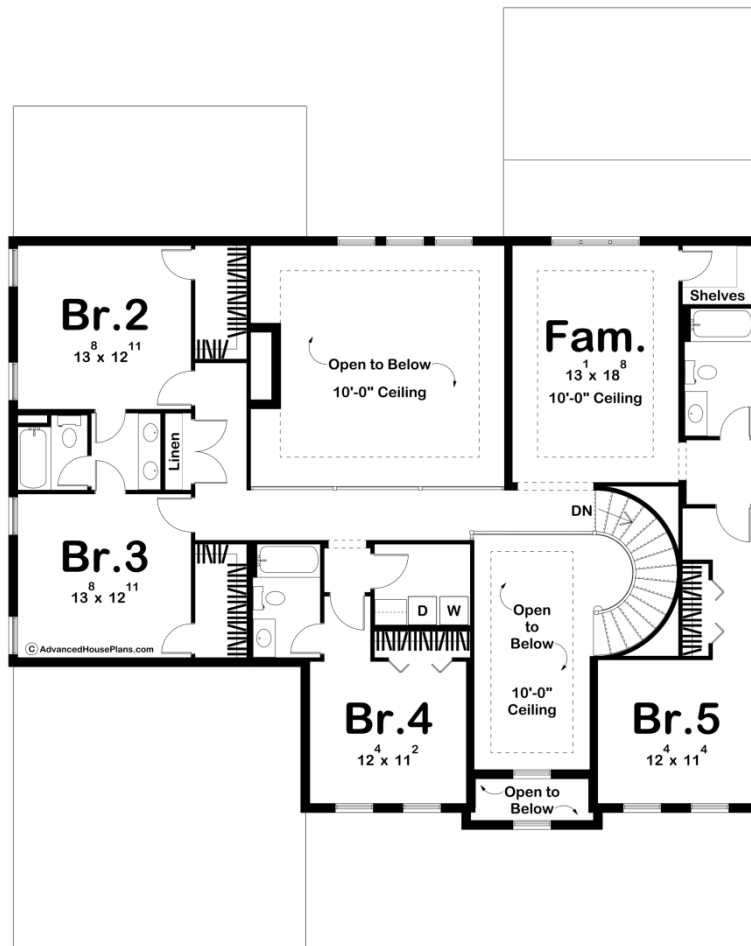




**30111 - Oakville Data Sheet**

|               |           |            |           |                |                |
|---------------|-----------|------------|-----------|----------------|----------------|
| 4094<br>SQ FT | 5<br>BEDS | 5<br>BATHS | 3<br>BAYS | 58' 8"<br>WIDE | 74' 0"<br>DEEP |
|---------------|-----------|------------|-----------|----------------|----------------|





## Construction Specs

### Layout

|             |   |
|-------------|---|
| Bedrooms    | 5 |
| Bathrooms   | 5 |
| Garage Bays | 3 |

### Square Footage

|                     |              |
|---------------------|--------------|
| Main Level          | 2400 Sq. Ft. |
| Second Level        | 1694 Sq. Ft. |
| Covered Area        | 280 Sq. Ft.  |
| Garage              | 828 Sq. Ft.  |
| Total Finished Area | 4094 Sq. Ft. |

### Exterior Dimensions

|  |        |
|--|--------|
| Width                                  | 58' 8" |
| Depth                                  | 74' 0" |
| Ridge Height                           | 32'    |
| <i>Calculated from main floor line</i> |        |

## Default Construction Stats

*Stats are unique to the individual plan.*

|                            |                                    |
|----------------------------|------------------------------------|
| Foundation Type            | Basement                           |
| Exterior Wall Construction | 2x4                                |
| Roof Pitches               | 8/12 Primary, 12/12 6/12 Secondary |
| Foundation Wall Height     | 9'                                 |
| Main Wall Height           | 9'                                 |
| Second Wall Height         | 8'                                 |

## Plan Description

The Oakville is a stunning traditional style home. The exterior symmetry lends itself to elements of the Colonial style. A front covered stoop leads into a 2 story entry way. To the left of the entry, you'll find a large formal living room. To the right of the entry, you'll find a formal dining room with a hallway to the kitchen. The kitchen, great room, and dinette flow seamlessly in an open layout. The great room lies under a 2 story ceiling and is warmed by a fireplace. A built-in bookshelf is next to the fireplace. The kitchen includes a large island with a snack bar and a massive walk-in pantry. The amazing master suite is located on the left side of the home. The large master bedroom lies under a decorative trayed ceiling and a private door leads to the rear patio. The master bathroom features a large soaking tub, a walk-in shower, an enclosed toilet area, and a large walk-in closet. On the second floor, you'll find 4 additional bedrooms and a large family room. The family room shares a centrally located hall bathroom with bedroom 5. Bedroom 4 has its own bathroom while bedrooms 2 and 3 share a Jack and Jill bathroom. Back on the main level, the home's huge 3 car side load garage accesses the home through a mud room with a bench and lockers.