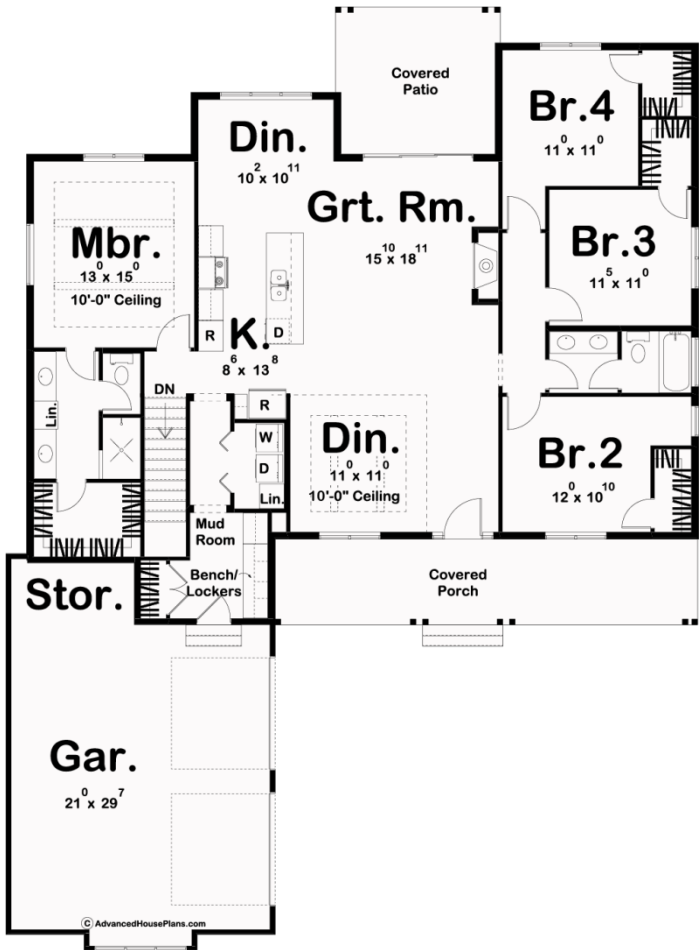




29635 - Montgomery Data Sheet

1989 SQ FT	4 BEDS	2 BATHS	2 BAYS	56' 0" WIDE	77' 0" DEEP
---------------	-----------	------------	-----------	----------------	----------------



Construction Specs

Layout

Bedrooms

Bathrooms	2
Garage Bays	2
Square Footage	
Main Level	1989 Sq. Ft.
Garage	605 Sq. Ft.
Total Finished Area	1989 Sq. Ft.
Exterior Dimensions	
Width	56' 0"
Depth	77' 0"
Ridge Height	24'
<i>Calculated from main floor line</i>	
Default Construction Stats	
<i>Stats are unique to the individual plan.</i>	
Foundation Type	Basement
Exterior Wall Construction	2x4
Roof Pitches	8/12 Primary, 10/12 Secondary
Foundation Wall Height	9'
Main Wall Height	9'

Plan Description

This beautifully configured Modern Farmhouse plan offers amenities that are usually found in much larger home designs. On the outside, board and batten siding and a covered porch put on a striking display of curb appeal. Just inside, you'll be amazed at the open floor plan including a magnificent great room, which is warmed by a fireplace and flows into a dining room with exposed beams. The kitchen boasts a spacious island with a breakfast bar. Just beyond the great room, a covered patio extends entertaining options. The master suite enjoys a luxurious bath, complete with compartmented toilet, walk-in shower, dual vanities, and a large walk-in closet. On the other side of this house plan, 3 bedrooms share a conveniently located bathroom in the hallway. The large 2 car garage accesses the home through a convenient mud room complete with a bench and lockers.