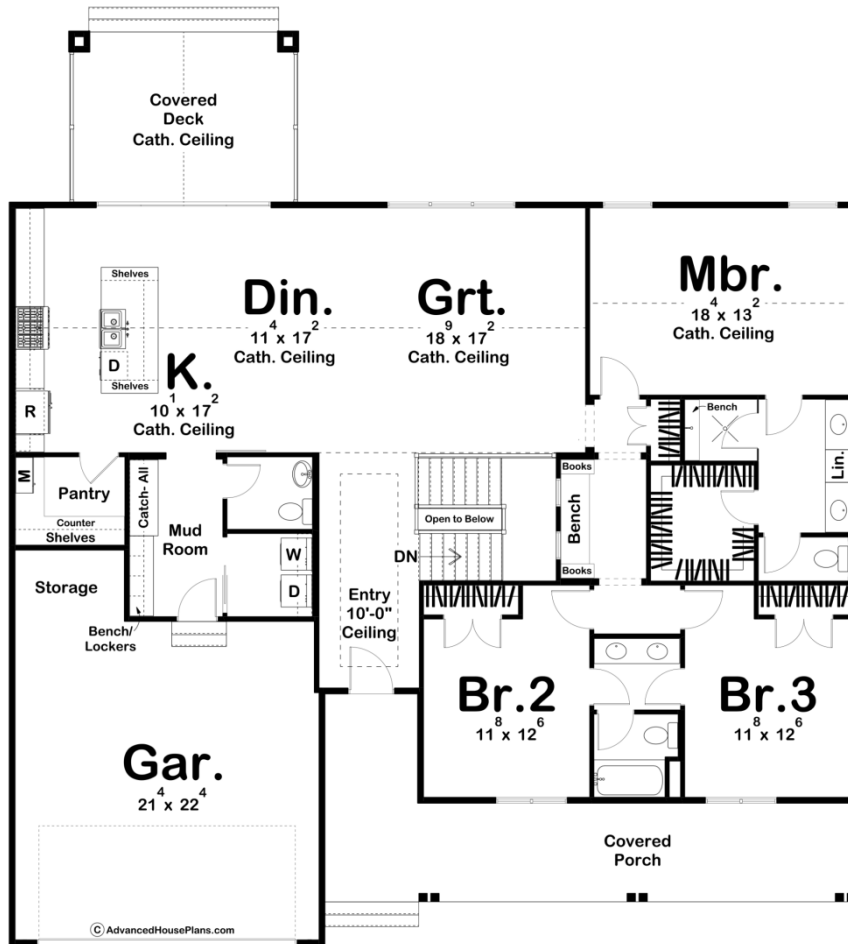




**30305 - Minderman Data Sheet**

2126 SQ FT	3 BEDS	3 BATHS	2 BAYS	59' 4" WIDE	64' 0" DEEP
---------------	-----------	------------	-----------	----------------	----------------



**Construction Specs**

**Layout**

Bedrooms

Bathrooms	3
Garage Bays	2

### Square Footage

Main Level	2126 Sq. Ft.
Covered Area	504 Sq. Ft.
Garage	540 Sq. Ft.
Total Finished Area	2126 Sq. Ft.

### Exterior Dimensions

Width	59' 4"
Depth	64' 0"
Ridge Height <i>Calculated from main floor line</i>	23' 10"

### Default Construction Stats

*Stats are unique to the individual plan.*

Foundation Type	Basement
Exterior Wall Construction	2x4
Roof Pitches	Primary 8/12, Secondary 10/12, 4/12
Foundation Wall Height	9'
Main Wall Height	9'

## Plan Description

The Minderman's deep, covered entry opens to an expansive cathedral-ceiling great room and dining area with wide open views out of the back of the home. The kitchen, resting off to one side, extends this gathering area, with a large island, walk-in pantry and an ever-practical mud room, complete with bench and lockers. Sleeping rooms maintain their privacy from the living areas. The master suite's bath includes a compartmented toilet, walk-in shower and his/hers vanities. The secondary bedrooms share a jack-and-jill bath with a double vanity. A fun library area separates the master bedroom from the others. On the outside, a large covered porch enhances the home's immediate sense of warmth and hospitality. Balancing this comfortable outdoor space at the rear of the home, is a roomy covered deck, perfect for entertaining guests, rain or shine.