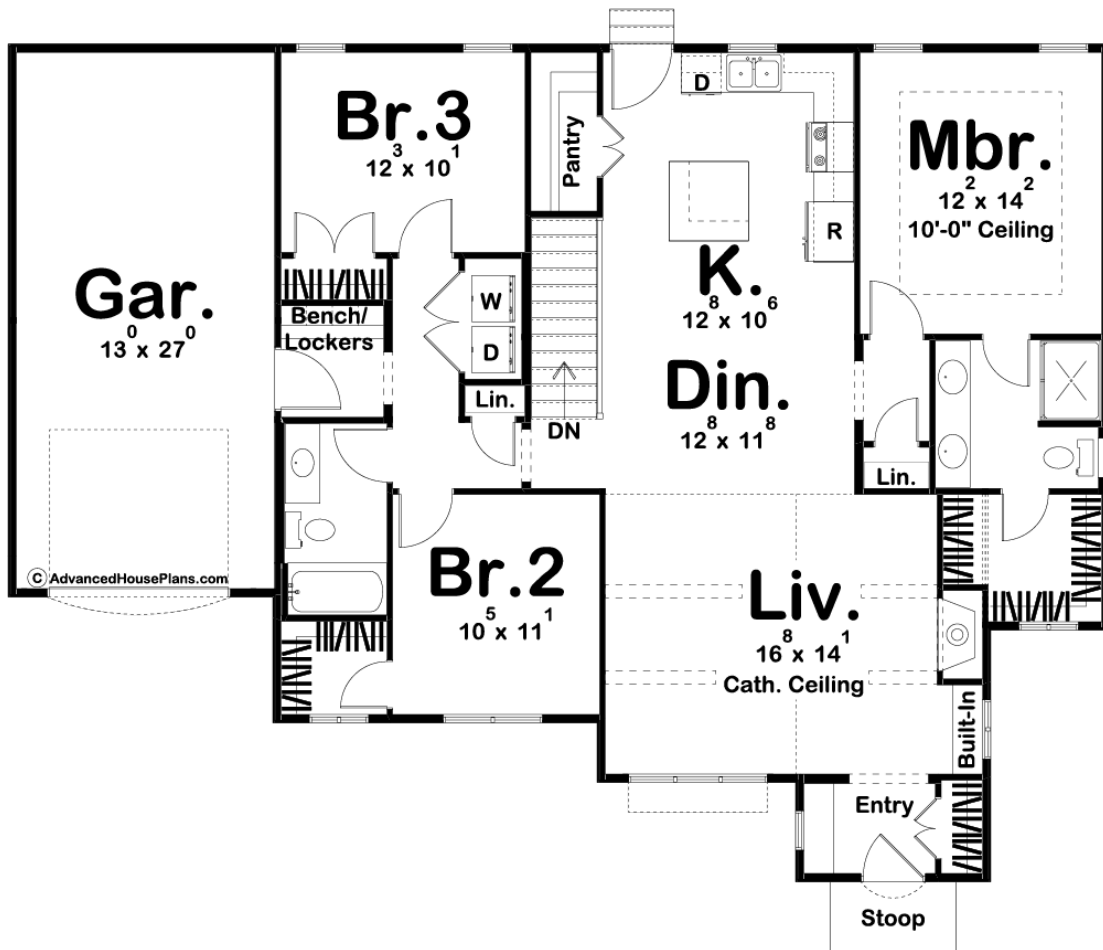




**29760 - Miller Park Data Sheet**

1507 SQ FT	3 BEDS	2 BATHS	1 BAYS	56' 0" WIDE	46' 0" DEEP
---------------	-----------	------------	-----------	----------------	----------------



**Construction Specs**

Layout

Bedrooms

Bathrooms	2
-----------	---

Garage Bays	1
-------------	---

### Square Footage

Main Level	1507 Sq. Ft.
------------	--------------

Garage	369 Sq. Ft.
--------	-------------

Total Finished Area	1507 Sq. Ft.
---------------------	--------------

### Exterior Dimensions

Width	56' 0"
-------	--------

Depth	46' 0"
-------	--------

### Default Construction Stats

*Stats are unique to the individual plan.*

Foundation Type	Basement
-----------------	----------

Exterior Wall Construction	2x4
----------------------------	-----

Roof Pitches	10/12 Primary, 16/12 Secondary
--------------	--------------------------------

Foundation Wall Height	9'
------------------------	----

Main Wall Height	9'
------------------	----

## Plan Description

If you are looking for a house with a great charming curb appeal, look no further than the Miller Park plan. This cottage style plan offers a great throwback to an old school cottage style design while including modern amenities. As you step through the home's front stoop, you'll be greeted by an excellent entryway that includes a bench and a coat closet. Another step further and you are in the cozy living room that is warmed by a wood-framed fireplace. The home's open floorplan flows into the dining room and kitchen area. The kitchen includes a large kitchen island and a pantry. On the right side of the home lies the master suite. The master bathroom includes his/her vanities and a walk-in closet. On the opposite side of the home, bedrooms 2 and 3 share a centrally located bathroom. Bedroom 2 includes a walk-in closet. The home's 1 car garage accesses the home through a convenient mudroom that includes a bench and lockers.