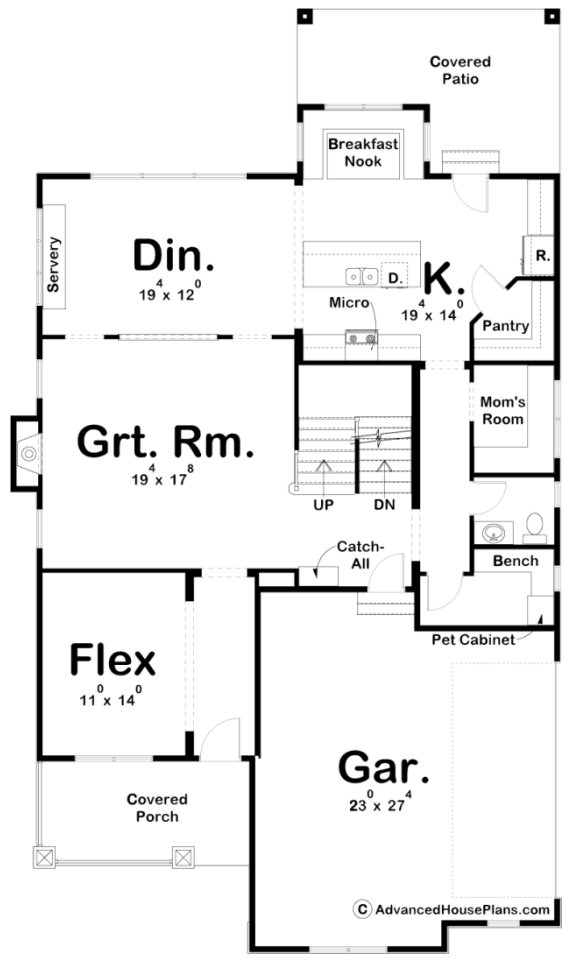
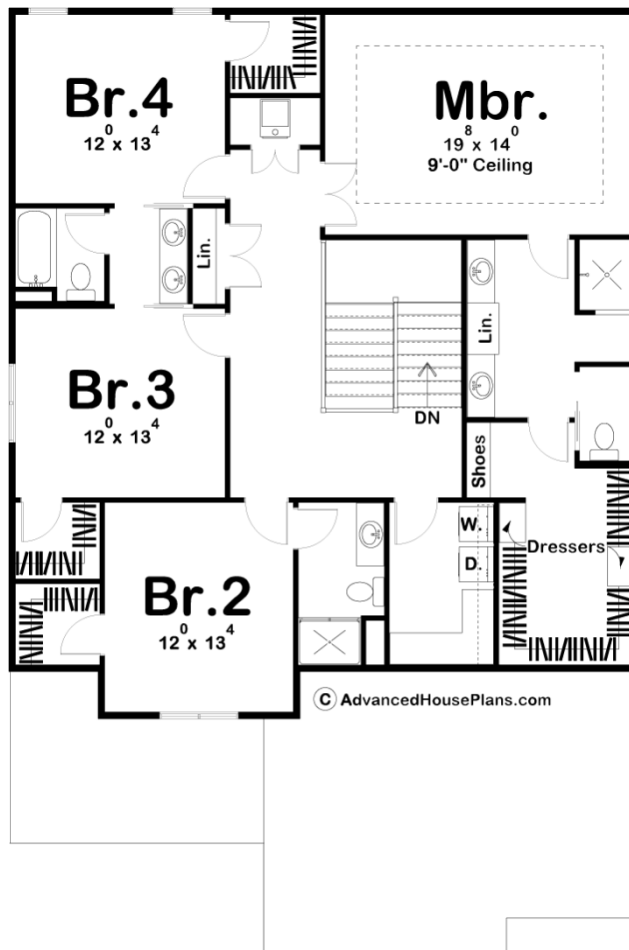




**29350 - Middleton Data Sheet**

|               |           |            |           |                |                |
|---------------|-----------|------------|-----------|----------------|----------------|
| 3208<br>SQ FT | 4<br>BEDS | 4<br>BATHS | 2<br>BAYS | 42' 0"<br>WIDE | 73' 0"<br>DEEP |
|---------------|-----------|------------|-----------|----------------|----------------|





## Construction Specs

### Layout

|             |   |
|-------------|---|
| Bedrooms    | 4 |
| Bathrooms   | 4 |
| Garage Bays | 2 |

### Square Footage

|                     |              |
|---------------------|--------------|
| Main Level          | 1587 Sq. Ft. |
| Second Level        | 1621 Sq. Ft. |
| Garage              | 596 Sq. Ft.  |
| Total Finished Area | 3208 Sq. Ft. |

### Exterior Dimensions

|  |        |
|--|--------|
| Width                                  | 42' 0" |
| Depth                                  | 73' 0" |
| Ridge Height                           | 32' 0" |
| <i>Calculated from main floor line</i> |        |

## Default Construction Stats

*Stats are unique to the individual plan.*

|                            |                               |
|----------------------------|-------------------------------|
| Foundation Type            | Basement                      |
| Exterior Wall Construction | 2x4                           |
| Roof Pitches               | 7/12 Primary, 12/12 Secondary |
| Foundation Wall Height     | 9'                            |
| Main Wall Height           | 9'                            |
| Second Wall Height         | 8'                            |

## Plan Description

Stone accents and a quartet of gables lend a sense of warmth to this charming 2 story house plan. The first steps inside reveal open views to a flexible space with unlimited options for use. The great room offers comfortable entertaining with its cozy fireplace and access to the dining area. To the rear of the home, an island kitchen, complete with walk-in pantry and breakfast nook, accesses a covered patio for dining options outside. A side-load garage accesses the home through a thoughtful arrangement of practical, family-friendly spaces. For example, immediately inside from the garage, a catch-all area helps contain clutter. The mud room features a bench and pet cabinet, and an adjacent powder bath lies next to the much-appreciated Mom's Room. Upstairs, the master suite occupies one side of the design. Its bath area includes his and her vanities, shower, compartmented toilet and access to a walk-in closet with built-in dressers and shoe storage. All secondary bedrooms lie on the opposite side of the second floor and enjoy walk-in closets. Bedroom 2 has a private bath, while bedrooms 3 and 4 share a Jack-n-Jill bath area. An upstairs laundry serves all of the bedrooms and offers plenty of sensible counter space.