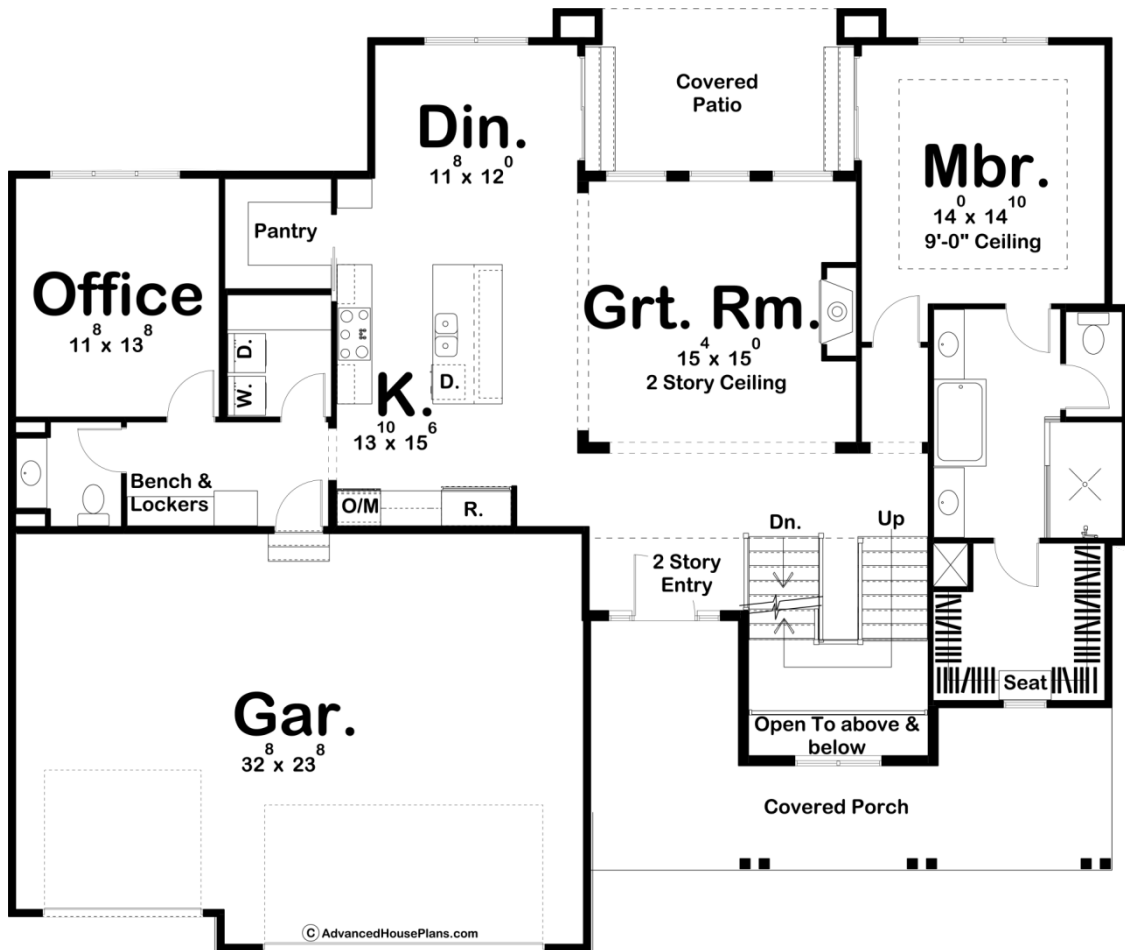


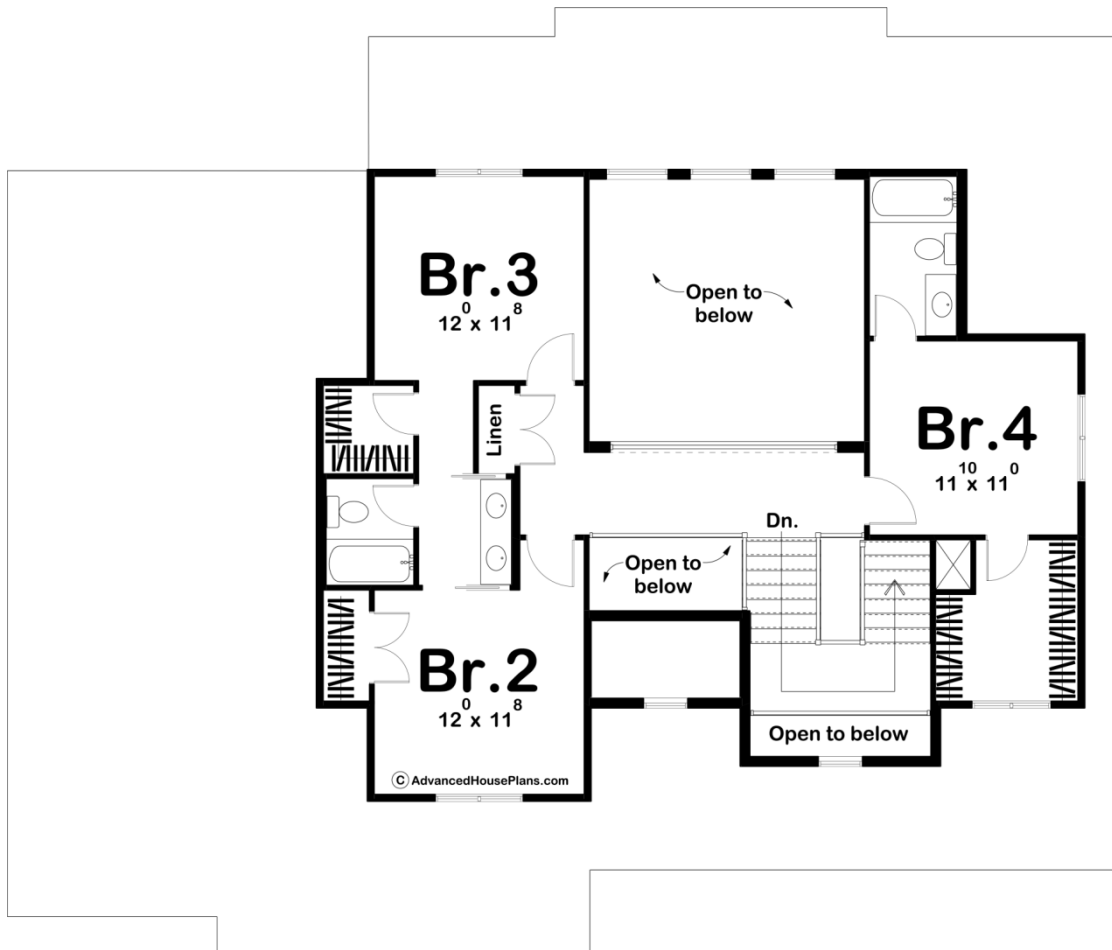


© WWW.ADVANCEDHOUSEPLANS.COM

29683 - Meadow Valley Data Sheet

2687 SQ FT	4 BEDS	4 BATHS	3 BAYS	65' 0" WIDE	54' 0" DEEP
---------------	-----------	------------	-----------	----------------	----------------





Construction Specs

Layout

Bedrooms	4
Bathrooms	4
Garage Bays	3

Square Footage

Main Level	1786 Sq. Ft.
Second Level	901 Sq. Ft.
Garage	775 Sq. Ft.
Total Finished Area	2687 Sq. Ft.

Exterior Dimensions

Width	65' 0"
Depth	54' 0"

Default Construction Stats

Stats are unique to the individual plan.

Foundation Type	Basement
-----------------	----------

Exterior Wall Construction	2x4
Roof Pitches	6/12 Primary
Foundation Wall Height	9'
Main Wall Height	9'
Second Wall Height	8'

Plan Description

Wood beams and board and batten siding give this family-friendly 1.5-story house plan a beautiful modern farmhouse look. Grand impressions are made on the inside, beneath the entry and great room's 2-story-high ceiling. The great room, with views to the rear through a covered deck, is warmed by a beautiful fireplace. The kitchen, open to the dining area, boasts generous counter space, a work island, and walk-in pantry. The home's 3-car garage is accessed from the kitchen through a mudroom/utility area, complete with laundry, powder bath, and bench/lockers. The master suite rests quietly away from the hustle and bustle of the main-floor living areas. Its bath is well appointed with his and her vanities, compartmented toilet, spacious shower and roomy walk-in closet with built-in dressing seat. Upstairs, the three secondary bedrooms enjoy their own privacy. Bedrooms 3 and 4 each include a walk-in closet. Bedrooms 2 and 3 share a Jack-n- Jill bath with compartmented toilet and tub. Bedroom 4 benefits from access to its own bath. Additional intriguing points of this house plan include views from second-story balconies to the great room and entry area below, as well as open views above and below from the U-shaped stairway. As always any Advanced House Plans home plan can be customized to fit your needs with our alteration department. Whether you need to add another garage stall, change the front elevation, stretch the home larger or just make the home plan more affordable for your budget we can do that and more for you at Ahp.