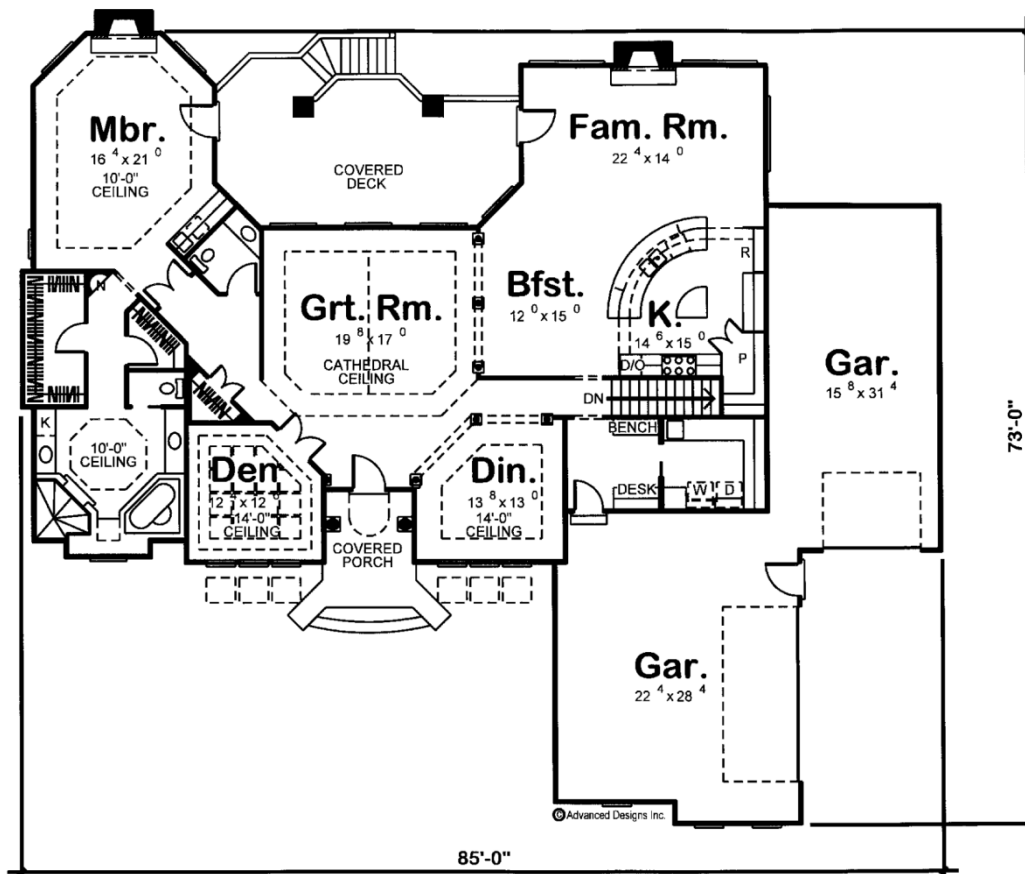




29136 - Marleigh Data Sheet

2613 SQ FT	1 BEDS	2 BATHS	3 BAYS	85' 0" WIDE	73' 0" DEEP
---------------	-----------	------------	-----------	----------------	----------------



Construction Specs

Layout

Bedrooms

Bathrooms	2
Garage Bays	3
Square Footage	
Main Level	2613 Sq. Ft.
Garage	1138 Sq. Ft.
Total Finished Area	2613 Sq. Ft.
Exterior Dimensions	
Width	85' 0"
Depth	73' 0"
Ridge Height	21'
<i>Calculated from main floor line</i>	
Default Construction Stats	
<i>Stats are unique to the individual plan.</i>	
Foundation Type	Basement
Exterior Wall Construction	2x4
Roof Pitches	6/12
Foundation Wall Height	9'
Main Wall Height	9'

Plan Description

A tasteful blend of classic design elements and textures beautify this Mediterranean-style, 1-story house plan. Inside, immediate views reveal the elegant cathedral ceiling great room and the fabulous covered rear deck beyond. Flanking the entry hall are the formal dining room and den, both with 14-foot-tall ceilings. To one side of the great room, the family room, breakfast area, and kitchen openly interact for easy entertaining. The corner kitchen features a gracefully arced island workspace and walk-in pantry. Just steps away, a utility area includes a laundry room with ample counter space and a soaking sink, in addition to a mud room with built-in bench and desk. The mud room serves as a buffer between the home's living areas and its two garages -- one 2-car, side-load garage and one 1-car, front-load garage. The sprawling luxury master suite is well-secluded for privacy. The master bedroom features its own fireplace and access to the rear covered porch. The master bath area showcases special ceiling details along with a corner tub, walk-in shower, his-and-her vanities, compartmented toilet and his-and-her walk-in closets.