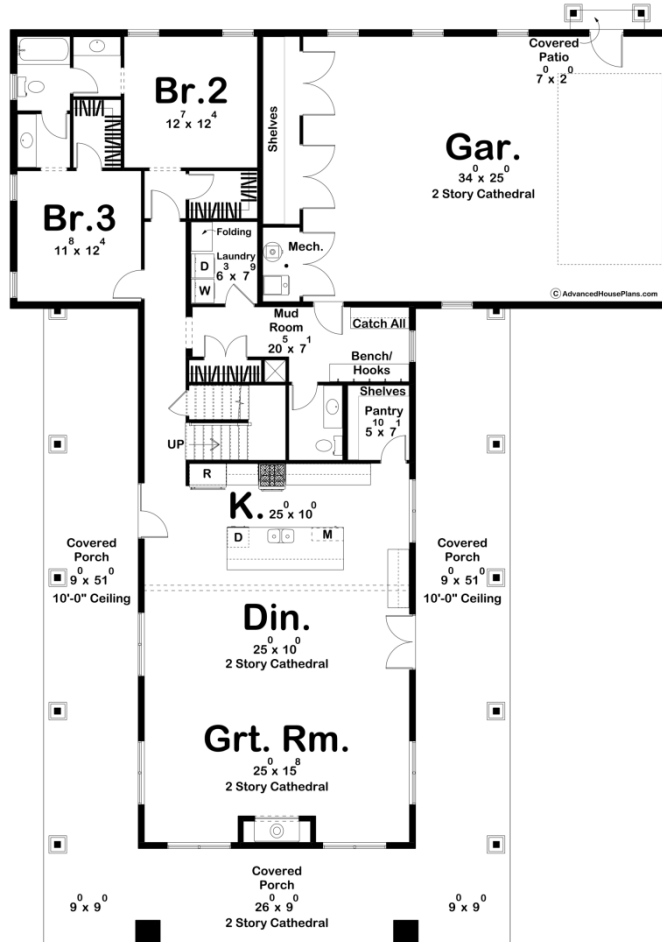
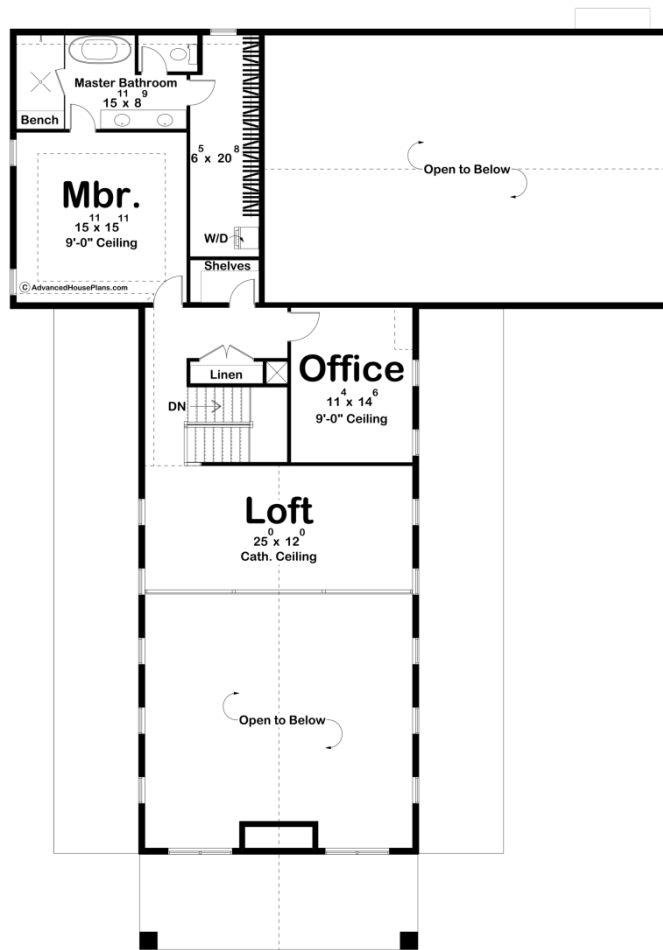




30332 - Marion Data Sheet

| | | | | | |
|---------------|-----------|------------|-----------|----------------|----------------|
| 3192 SQ FT | 3 BEDS | 3 BATHS | 2 BAYS | 62' 0" WIDE | 88' 0" DEEP |
|---------------|-----------|------------|-----------|----------------|----------------|





Construction Specs

Layout

| | |
|-------------|---|
| Bedrooms | 3 |
| Bathrooms | 3 |
| Garage Bays | 2 |

Square Footage

| | |
|---------------------|--------------|
| Main Level | 1949 Sq. Ft. |
| Second Level | 1243 Sq. Ft. |
| Covered Area | 1064 Sq. Ft. |
| Garage | 990 Sq. Ft. |
| Total Finished Area | 3192 Sq. Ft. |

Exterior Dimensions

| | |
|-------|--------|
| Width | 62' 0" |
| Depth | 88' 0" |

Default Construction Stats

Stats are unique to the individual plan.

| | |
|----------------------------|-------------------------------------|
| Foundation Type | Slab |
| Exterior Wall Construction | 2x6 |
| Roof Pitches | Primary 12/12, Secondary 4/12, 8/12 |
| Main Wall Height | 9' |
| Second Wall Height | 8' |

Plan Description

Introducing the Marion. A home filled with rustic elegance and modern convenience. This architectural marvel combines the charm of a barn-inspired exterior with a thoughtfully designed interior that embraces contemporary living. The house welcomes you with a grand and spacious covered porch on the front, adorned with a striking gable truss that evokes a sense of timeless charm. This front porch is perfect for relaxing evenings and enjoying the beauty of the surrounding landscape. But the porch doesn't stop there - it wraps around 3 sides of the house, offering multiple outdoor living spaces that invite you to enjoy the fresh air, entertain, or simply unwind. An oversized 2-car garage provides ample space for your vehicles and extra storage, keeping them protected from the elements. As you step through the front door, you enter into a dining space that seamlessly flows into the open kitchen and great room. The two-story cathedral ceiling in the great room and dining area adds a sense of grandeur and spaciousness, creating a captivating focal point for the main living area. The kitchen is a chef's dream, featuring a large island with a convenient snack bar and a walk-in pantry. This space is not just for cooking; it's a place for culinary creativity and social gatherings. The main floor also hosts two generously sized guest rooms, which share a Jack and Jill bathroom. This unique feature allows for comfortable and private accommodations for family and guests. A mudroom, laundry room, and powder bath on the main floor provide practicality and efficiency to your daily routines. As you ascend to the second floor, you'll find the master bedroom, a private retreat designed with your comfort in mind. The master bedroom includes a full ensuite bathroom and a large walk-in closet with the added convenience of a washer and dryer stack. The second floor also offers a dedicated office space, perfect for working from home or managing personal affairs. Additionally, a loft area on this level provides a versatile space for relaxation, reading, or recreational activities. Our Barndominium-style house plan combines the best of both worlds - a visually captivating exterior with a well-thought-out interior that prioritizes comfort, convenience, and modern living. With its spacious covered porches, an oversized garage, open living spaces, and a unique guest room and master suite layout, this home is the perfect blend of rustic charm and contemporary luxury. It's a place where you can create lasting memories and enjoy the beauty of the outdoors from the comfort of your own sanctuary.