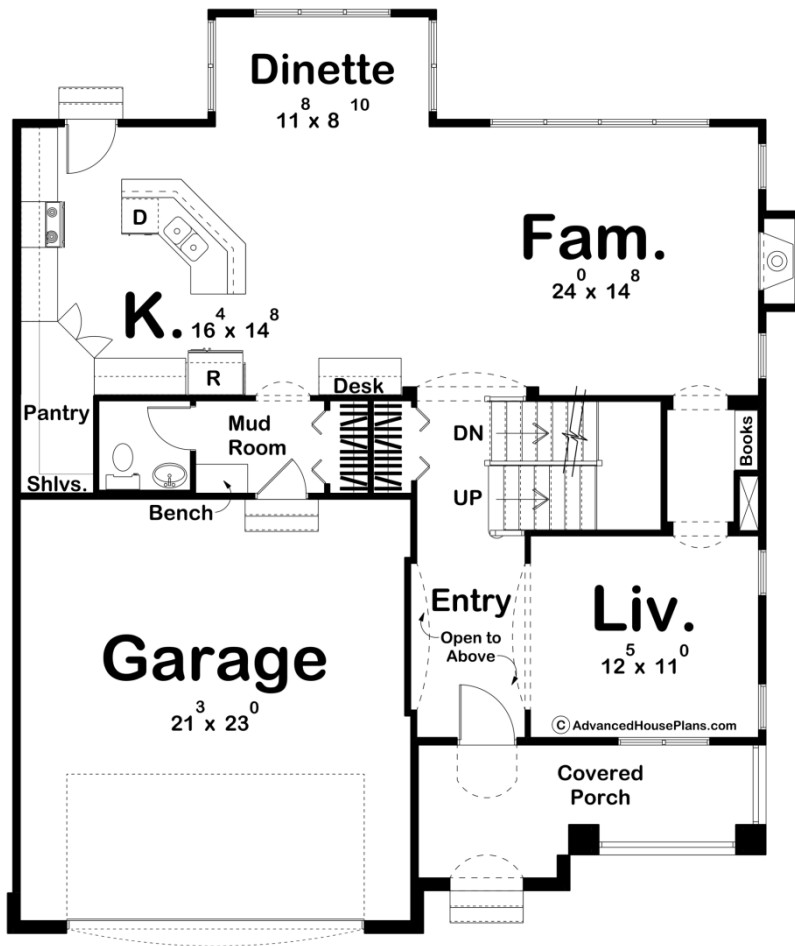
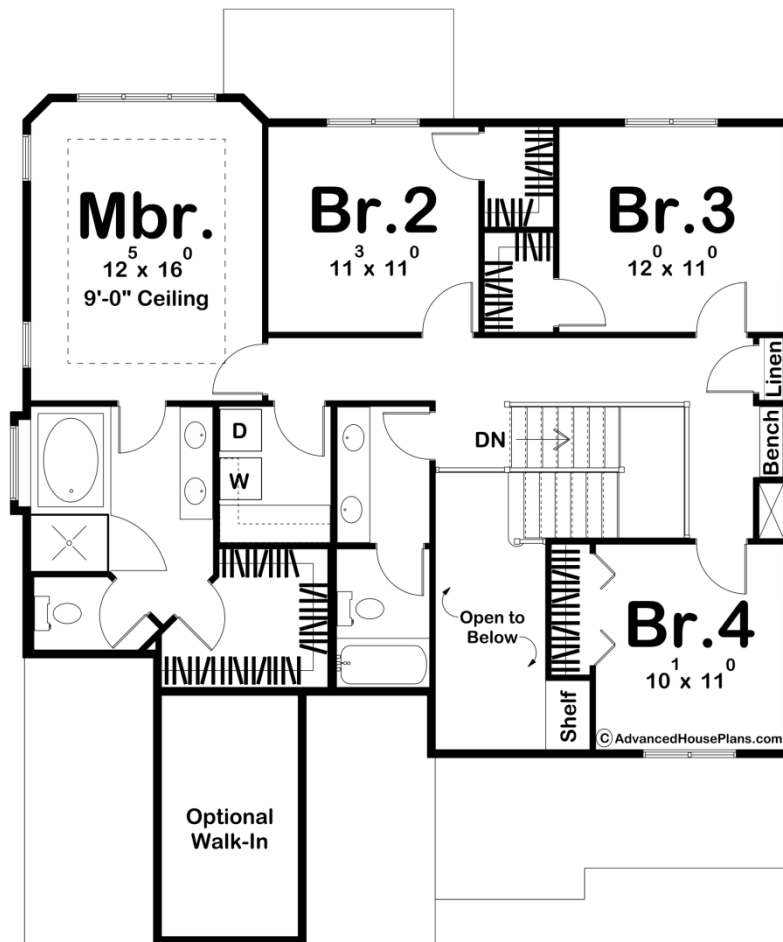




**29151 - Maguire Data Sheet**

2333 SQ FT	4 BEDS	3 BATHS	2 BAYS	43' 0" WIDE	50' 0" DEEP
---------------	-----------	------------	-----------	----------------	----------------





## Construction Specs

### Layout

Bedrooms	4
Bathrooms	3
Garage Bays	2

### Square Footage

Main Level	1175 Sq. Ft.
Second Level	1158 Sq. Ft.
Garage	513 Sq. Ft.
Total Finished Area	2333 Sq. Ft.

### Exterior Dimensions

Width	43' 0"
Depth	50' 0"
Ridge Height	28'
<i>Calculated from main floor line</i>	

## Default Construction Stats

*Stats are unique to the individual plan.*

Foundation Type	Basement
Exterior Wall Construction	2x4
Roof Pitches	7/12 Primary, 12/12 Secondary
Foundation Wall Height	9'
Main Wall Height	9'
Second Wall Height	8'

## Plan Description

With this design we wanted a home that was narrow, yet still had curb appeal. Inside the home we emphasize family living. A 2 story entry is what you see when you enter the home, while a open kitchen helps maintain a comfortable feel with views into the family room and breakfast nook. As you continue upstairs the second level offers 4 bedrooms and a 2nd level laundry. The master suite has a boxed ceiling and a luxury master bath with a large walk in closet.