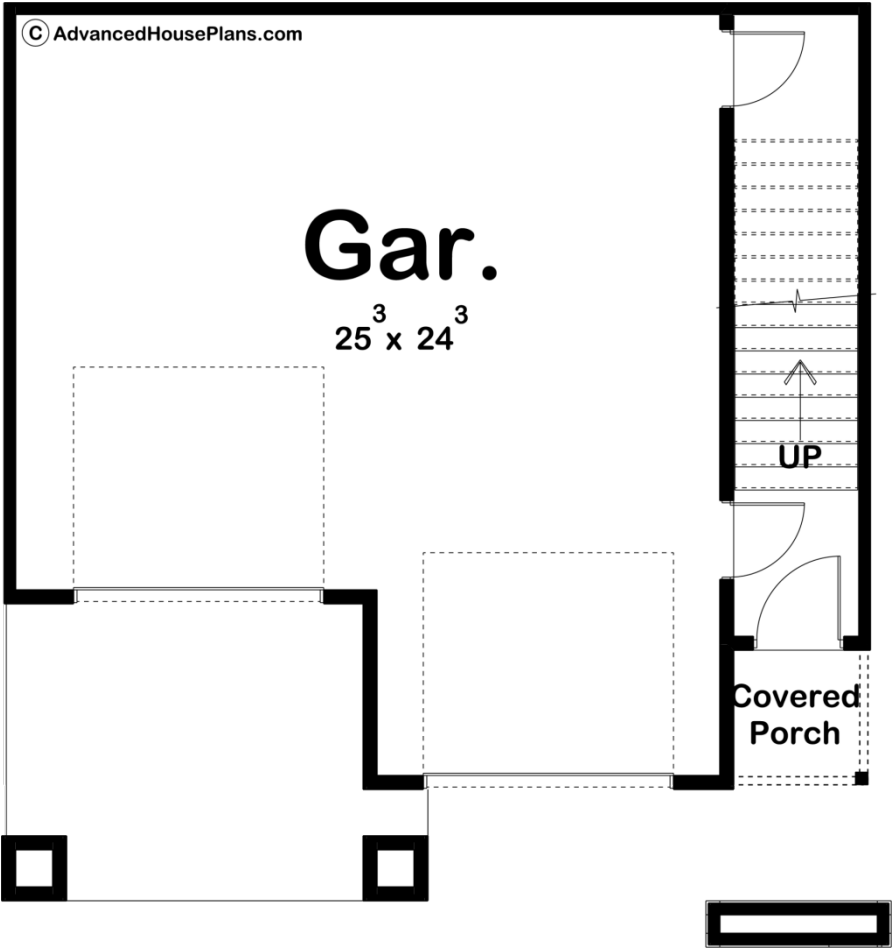
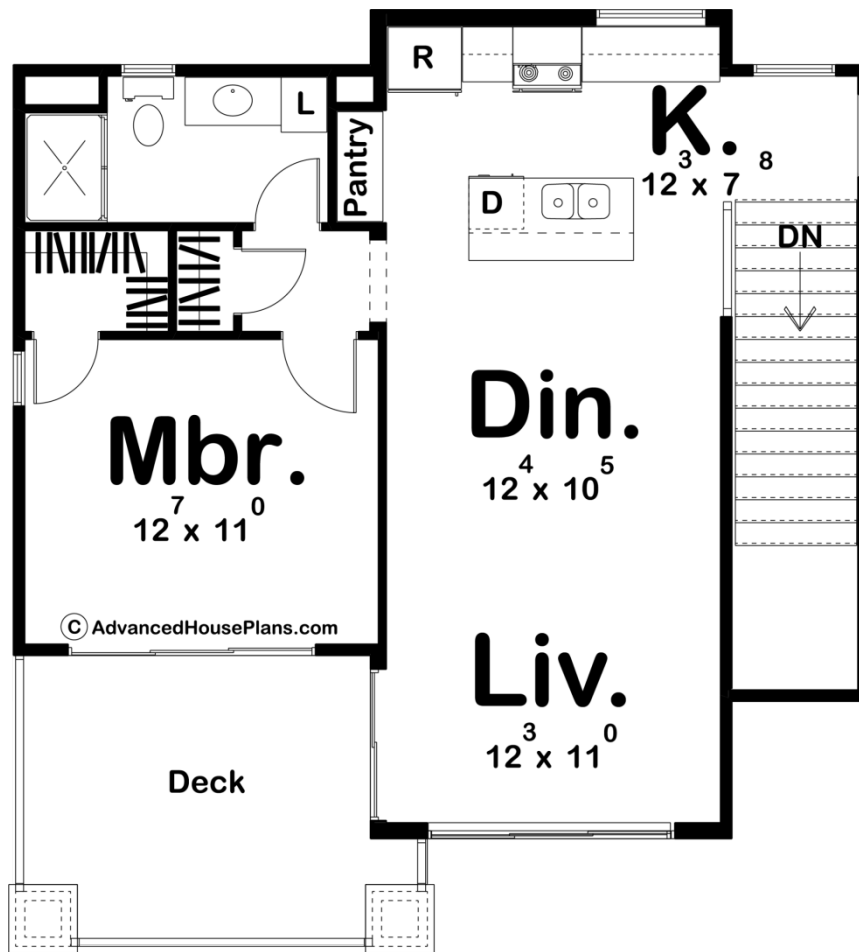




29592 - Lone Tree Data Sheet

758 SQ FT	1 BEDS	1 BATHS	2 BAYS	31' 0" WIDE	32' 0" DEEP
--------------	-----------	------------	-----------	----------------	----------------





## Construction Specs

### Layout

Bedrooms	1
Bathrooms	1
Garage Bays	2

### Square Footage

Main Level	758 Sq. Ft.
Garage	757 Sq. Ft.
Total Finished Area	758 Sq. Ft.

### Exterior Dimensions

Width	31' 0"
Depth	32' 0"
Ridge Height	26'
<i>Calculated from main floor line</i>	

### Default Construction Stats

*Stats are unique to the individual plan.*

Foundation Type	Slab
Exterior Wall Construction	2x4
Roof Pitches	4/12 Primary, 6/12 Secondary
Foundation Wall Height	9'
Main Wall Height	9'

## Plan Description

Modern styling, metal roof, thinset stone veneer, and cedar siding help set this 2 car apartment garage apart from its competition. When pulling into your 2 car garage you will be greeted with 9' wide glass garage doors and ample room for your daily driver. A formal entry with staircase sits behind the cedar planter box which leads you upstairs to your 1 bedroom apartment. A kitchen with all the amenities which are found in a much larger home sits at the top of the stairs. The kitchen hosts an island for entertaining guest as well as a walk-up pantry. Tall sloped ceilings and great views to both the dining and family room from the kitchen are what to expect in this unique modern apartment garage. The master bedroom lies just off of the kitchen and it hosts its own walk-in closet, 3/4 bath and a walkout deck that sits above the 2 car garage.