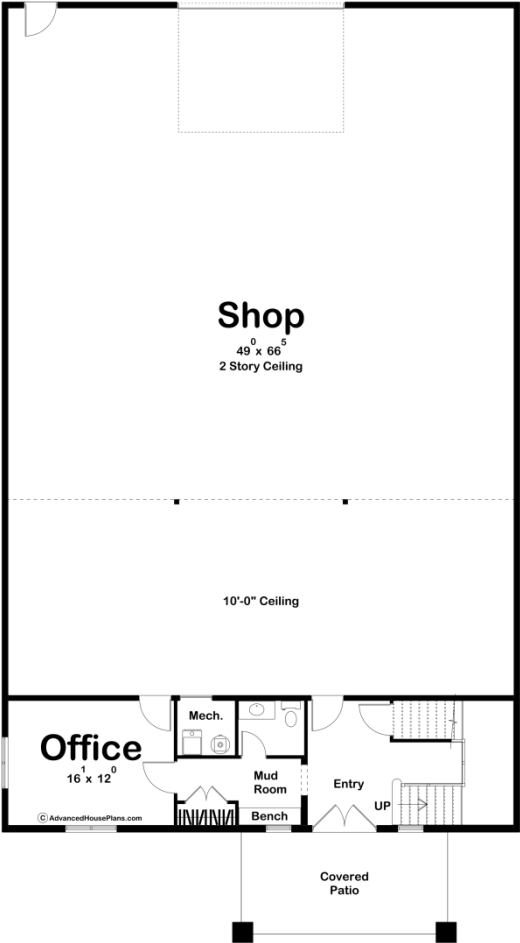
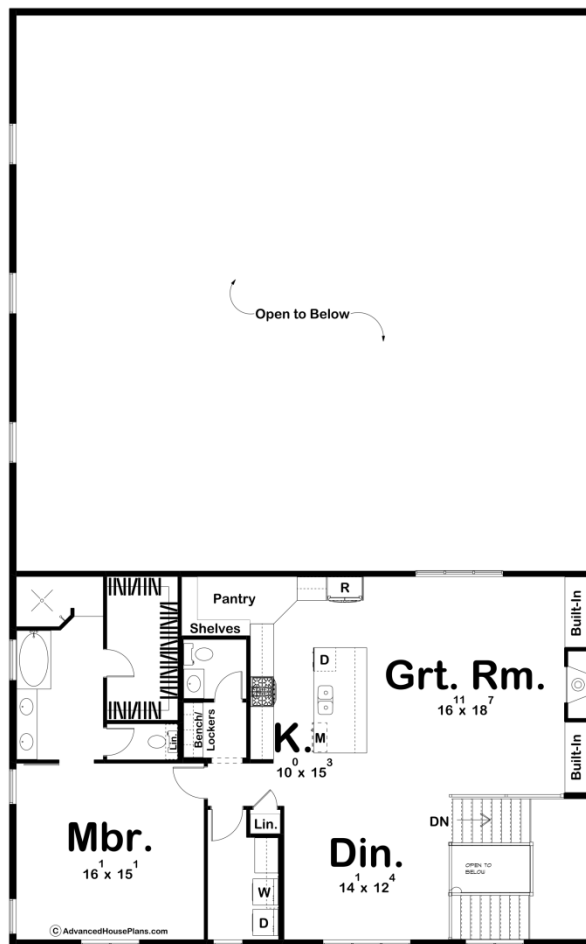




30088 - Lockwood Data Sheet

2057 SQ FT	1 BEDS	3 BATHS	6 BAYS	50' 0" WIDE	90' 0" DEEP
---------------	-----------	------------	-----------	----------------	----------------





## Construction Specs

### Layout

Bedrooms	1
Bathrooms	3
Garage Bays	6

### Square Footage

Main Level	620 Sq. Ft.
Second Level	1437 Sq. Ft.
Garage	3385 Sq. Ft.
Total Finished Area	2057 Sq. Ft.

### Exterior Dimensions

Width	50' 0"
Depth	90' 0"

### Default Construction Stats

*Stats are unique to the individual plan.*

Foundation Type	Slab
-----------------	------

Exterior Wall Construction	2x6
Roof Pitches	6/12 Primary
Main Wall Height	10'
Second Wall Height	9'

## Plan Description

If you've ever wondered what a "Shouse" is....it's this plan. A Shouse is a shop and a house under one roof. The Lockwood plan is a massive shop with fully functional living quarters on the second floor. The shop area comes in at over 3000 sq. ft. and is a great place for any hobbyist or anyone who works in their garage daily. An office is just off the Barndominium shop area and provides a great space to run your business from. On the Barndominium's second floor, you'll find an absolutely amazing 1 bedroom apartment. The great room is warmed by a fireplace that is flanked by built-in bookshelves. The full kitchen includes a large island and a deep walk-in pantry. The master bedroom includes a walk-in shower, dual vanity, a soaking tub, and a large walk-in closet.