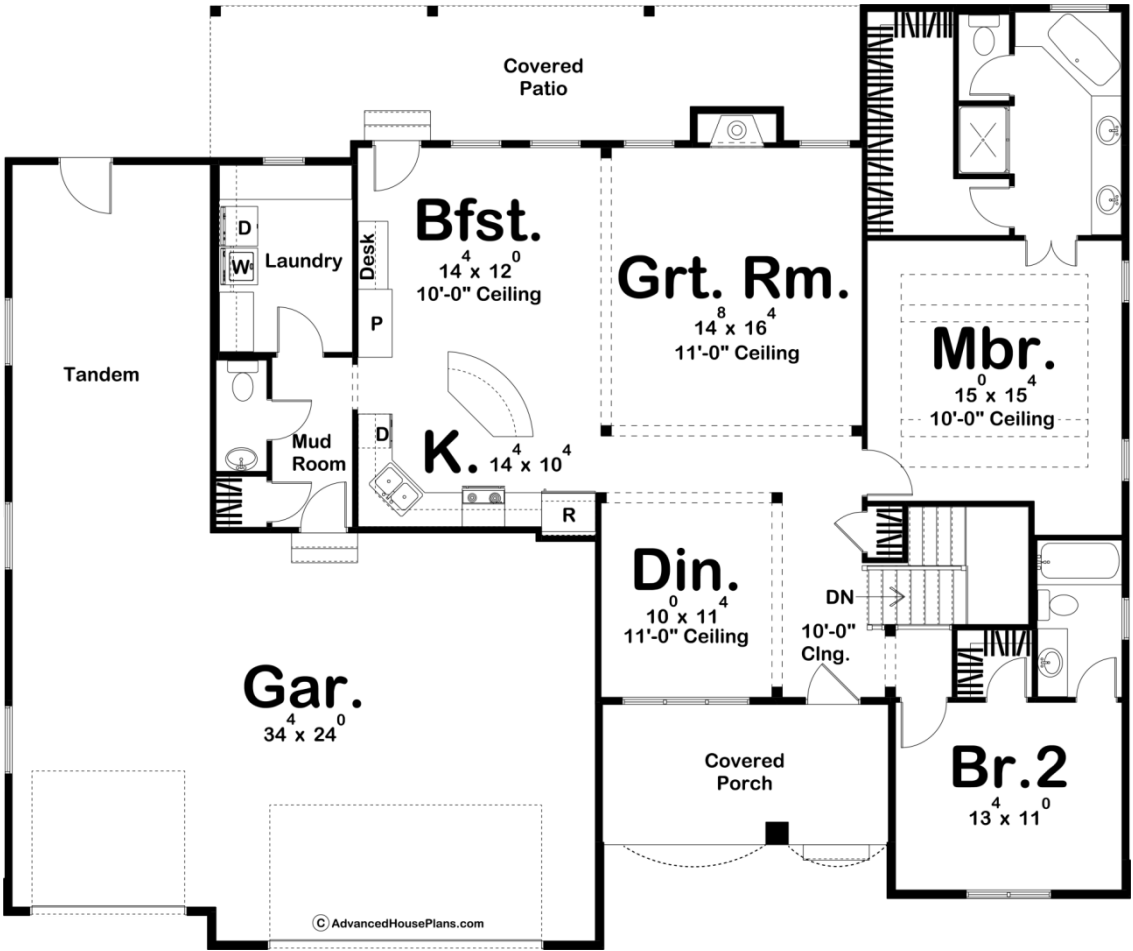




29183 - Larkin Data Sheet

1830 SQ FT	2 BEDS	3 BATHS	3 BAYS	66' 0" WIDE	56' 0" DEEP
---------------	-----------	------------	-----------	----------------	----------------



Construction Specs

Layout
--------

Bedrooms	2
----------	---

Bathrooms	3
Garage Bays	3
<b>Square Footage</b>	
Main Level	1830 Sq. Ft.
Garage	1088 Sq. Ft.
Total Finished Area	1830 Sq. Ft.
<b>Exterior Dimensions</b>	
Width	66' 0"
Depth	56' 0"
Ridge Height	24'
<i>Calculated from main floor line</i>	
<b>Default Construction Stats</b>	
<i>Stats are unique to the individual plan.</i>	
Foundation Type	Basement
Exterior Wall Construction	2x4
Roof Pitches	6/12 F-B, 8/12 S-S
Foundation Wall Height	9'
Main Wall Height	9'

## Plan Description

With high ceilings and open room arrangements, this 1,830 sq. ft., 1-story house plan feels like a much larger home on the inside. Expansive views from the entry include the dining room and great room -- both defined by ceiling heights and elegant corner columns. The kitchen and breakfast area enjoy open interaction with the great room for easy mingling. The kitchen itself has plenty of counter space in addition to a tastefully arced breakfast island workspace. The breakfast area opens to a covered patio that spans much of the home's back side. Just off the kitchen, a laundry room, powder bath, and a secondary entry area stand ready to intercept traffic from the home's 3-car garage. The garage can actually accommodate up to four cars, as one of the bays is a tandem. Otherwise, that extra space could be used for storage or a workshop. On the other side of the home, the master suite and one secondary bedroom reside. The master bedroom is adorned with a 10-foot-high ceiling. Its bath area includes a dual sink vanity, shower, corner tub, compartmented toilet, and walk-in closet. Bedroom 2 is separated for privacy and has its own bath and a walk-in closet.