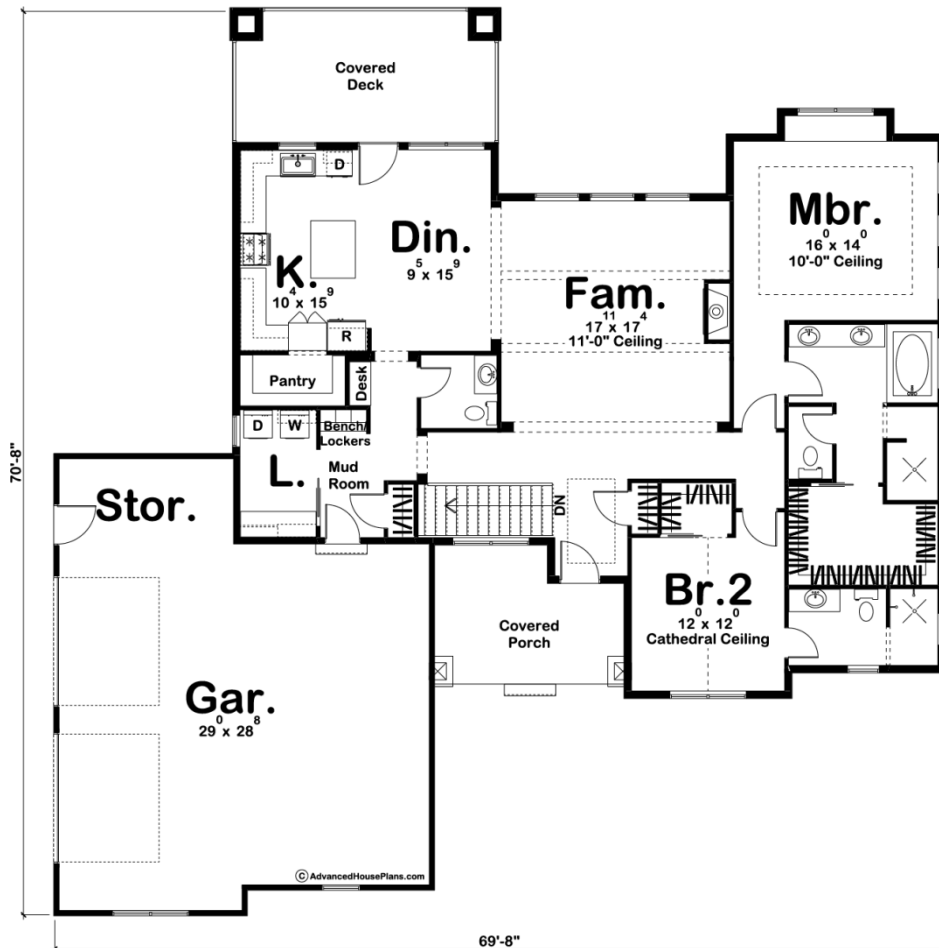




© WWW.ADVANCEDHOUSEPLANS.COM

29511 - Langley Data Sheet

1996 SQ FT	2 BEDS	3 BATHS	2 BAYS	70' 0" WIDE	71' 0" DEEP
---------------	-----------	------------	-----------	----------------	----------------



Construction Specs

Layout

Bedrooms

Bathrooms	3
-----------	---

Garage Bays	2
-------------	---

Square Footage

Main Level	1996 Sq. Ft.
------------	--------------

Garage	929 Sq. Ft.
--------	-------------

Total Finished Area	1996 Sq. Ft.
---------------------	--------------

Exterior Dimensions

Width	70' 0"
-------	--------

Depth	71' 0"
-------	--------

Ridge Height	25'
--------------	-----

Calculated from main floor line

Default Construction Stats

Stats are unique to the individual plan.

Foundation Type	Basement
-----------------	----------

Exterior Wall Construction	2x4
----------------------------	-----

Roof Pitches	8/12 F-B, 10/12 S-S
--------------	---------------------

Foundation Wall Height	9'
------------------------	----

Main Wall Height	9'
------------------	----

Plan Description

This 1 story house plan's covered porch opens to an inviting entry. Tall ceilings with wood beams complement the family room. The dining area and U-shaped kitchen, resting off to one side, extends this gathering area, with a sizeable island, walk-in pantry and an ever-practical mud room, complete with bench and lockers. Behind the kitchen and dining, a covered porch enhances the home's immediate sense of warmth and hospitality. This comfortable outdoor space is perfect for entertaining guests, rain or shine. Sleeping rooms maintain their privacy from the living areas. All possess generously sized walk-in closets and are brightened by plenty of outdoor light. The master suite's bath includes a compartmented toilet, walk-in shower, and a relaxing whirlpool tub.