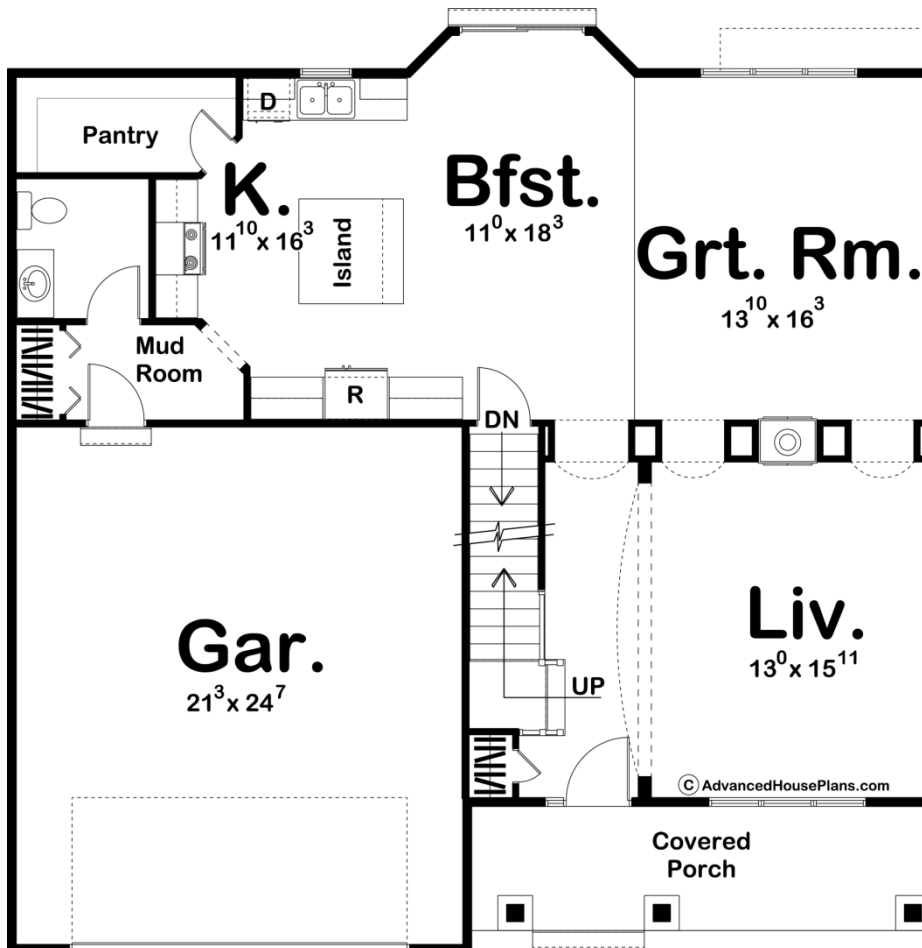
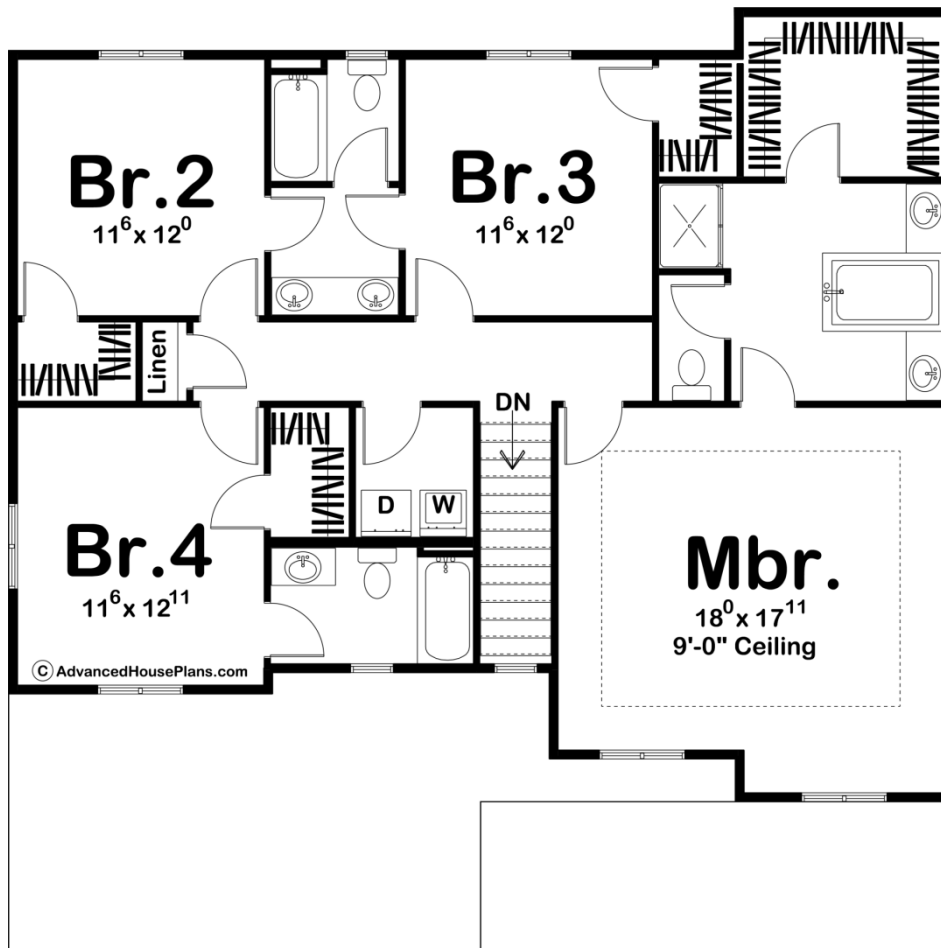




**29072 - Kincaid Data Sheet**

2554 SQ FT	4 BEDS	4 BATHS	2 BAYS	44' 0" WIDE	42' 0" DEEP
---------------	-----------	------------	-----------	----------------	----------------





## Construction Specs

### Layout

Bedrooms	4
Bathrooms	4
Garage Bays	2

### Square Footage

Main Level	1179 Sq. Ft.
Second Level	1375 Sq. Ft.
Garage	555 Sq. Ft.
Total Finished Area	2554 Sq. Ft.

### Exterior Dimensions

Width	44' 0"
Depth	42' 0"
Ridge Height	26'
<i>Calculated from main floor line</i>	

### Default Construction Stats

*Stats are unique to the individual plan.*

Foundation Type	Basement
Exterior Wall Construction	2x4
Roof Pitches	6/12
Foundation Wall Height	9'
Main Wall Height	9'
Second Wall Height	8'

## Plan Description

The Kincaid is a 2 story house plan. The Craftsman front elevation features an impressive front porch with wood columns and stone bases. Upon entry you will see the living room surrounded by an abundance of arches and a see through fireplace. The U shaped kitchen is great for the cook in the house and it has ample storage with the large walk in pantry. Upstairs in this 2 story house plan you have 4 bedrooms, each with their own walk in closet. Bedroom 2 and bedroom 3 share a Jack and Jill bath and bedroom 4 has its own private bath. The master bedroom suite has an over sized bedroom for this size of home, and a beautiful bathroom that features split vanities, whirlpool tub and a private stool room. This 2 story house plan is great for your growing family!