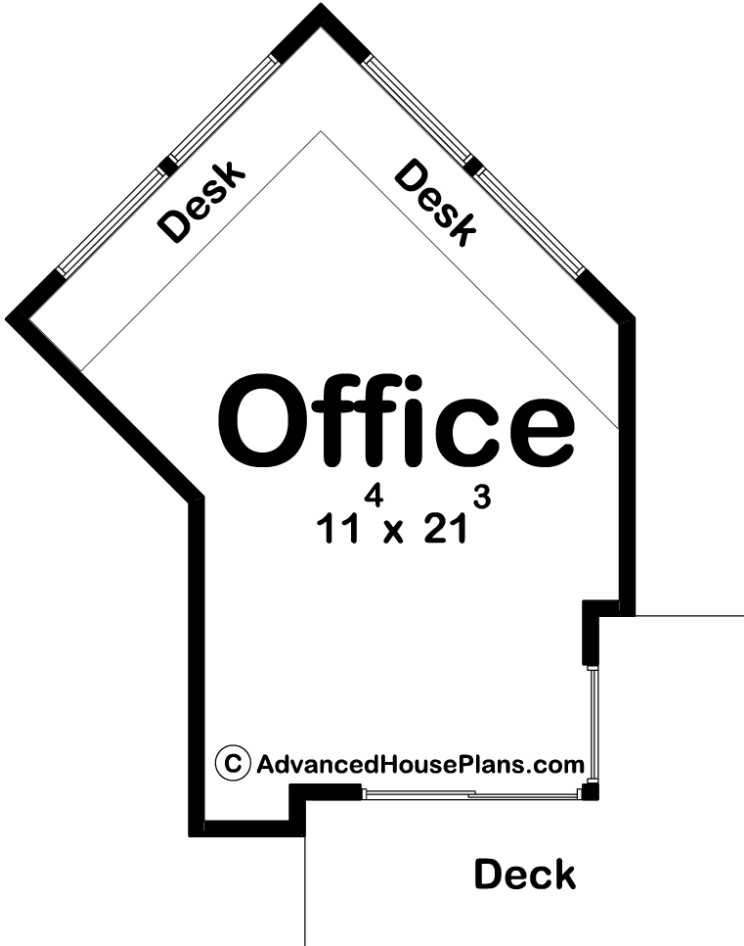




29872 - Kasson Data Sheet

238 SQ FT	0 BEDS	0 BATHS	0 BAYS	17' 0" WIDE	26' 0" DEEP
--------------	-----------	------------	-----------	----------------	----------------



Construction Specs

Layout
Square Footage

Main Level	238 Sq. Ft.
Total Finished Area	238 Sq. Ft.
Exterior Dimensions	
Width	17' 0"
Depth	26' 0"
Default Construction Stats <i>Stats are unique to the individual plan.</i>	
Foundation Type	Slab
Exterior Wall Construction	2x4
Roof Pitches	Flat
Main Wall Height	9'

Plan Description

The Kasson plan is a beautiful Modern style Backyard Office plan. The shape of this office makes this plan unique from our other backyard offices. Cedar siding and a flat roof pitch give this office a modern look. On the inside, you'll find an amazing built-in corner desk.