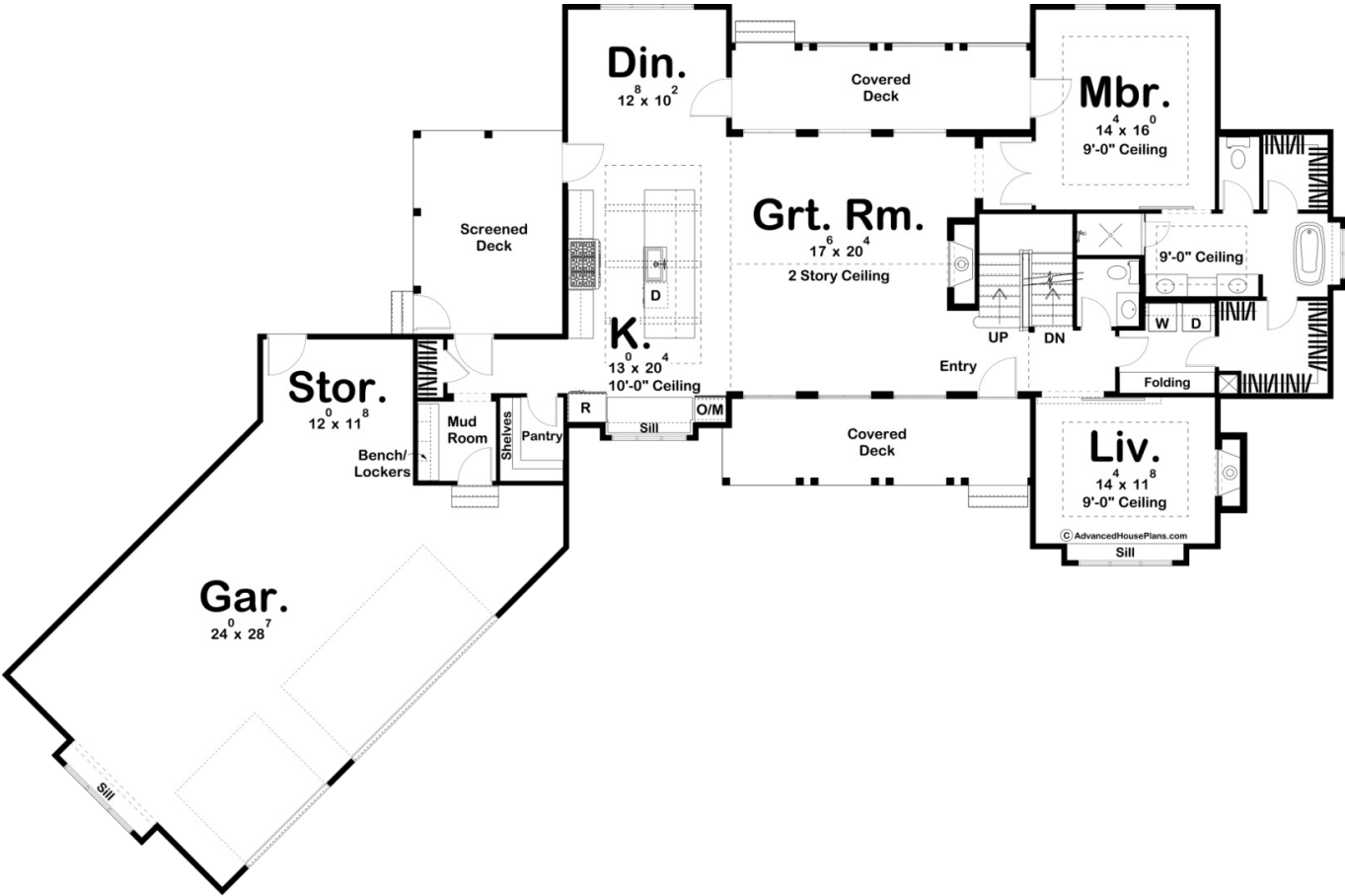
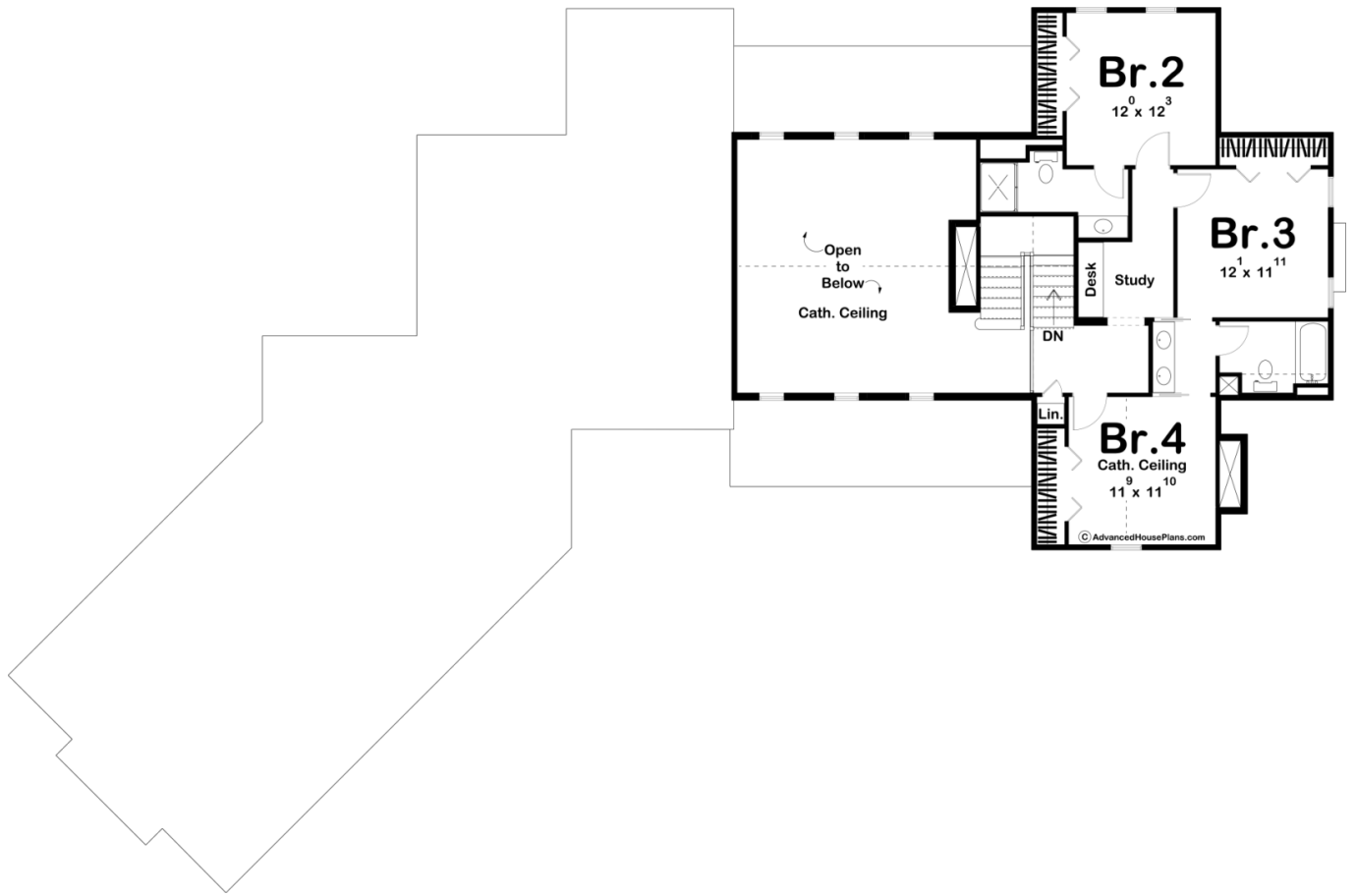




29899 - Julesberg Data Sheet

2764 SQ FT	4 BEDS	4 BATHS	3 BAYS	107' 0" WIDE	71' 0" DEEP
---------------	-----------	------------	-----------	-----------------	----------------





## Construction Specs

### Layout

Bedrooms	4
Bathrooms	4
Garage Bays	3

### Square Footage

Main Level	1935 Sq. Ft.
Second Level	829 Sq. Ft.
Covered Area	535 Sq. Ft.
Garage	982 Sq. Ft.
Total Finished Area	2764 Sq. Ft.

### Exterior Dimensions

Width	107' 0"
Depth	71' 0"

### Default Construction Stats

*Stats are unique to the individual plan.*

Foundation Type	Basement
Exterior Wall Construction	2x4
Roof Pitches	12/12 Primary
Foundation Wall Height	9'
Main Wall Height	9'
Second Wall Height	8'

## Plan Description

The great expanses of this 1.5-story, Modern Farmhouse plan are highlighted by three separate outdoor living areas -- a covered front deck, a rear covered deck, and a screened-in porch. Inside, immediate impressions are made by a soaring 2-story-high, cathedral ceiling in the great room. A trio of tall windows complements both the front and rear walls of the great room, offering views through the front porch and rear patio. The kitchen, with expansive work island, lies beneath its own beamed ceiling and is open to the dining area. Away from the living areas, the main floor's master suite features his and her walk-in closets, and his and her vanities in the bath. The suite can be entered either through an alcove off the great room or through a more circuitous route from the laundry area. Upstairs, bedroom 2 enjoys its own bath, while bedroom 3 and 4 share a Jack-n-Jill bath. Bedroom 4 receives an added sense of space from a tall cathedral ceiling. Back on the main level, the generously proportioned angled 3-car garage includes ample space for a workshop. It accesses the home through a mudroom, complete with bench, lockers, and a coat closet.