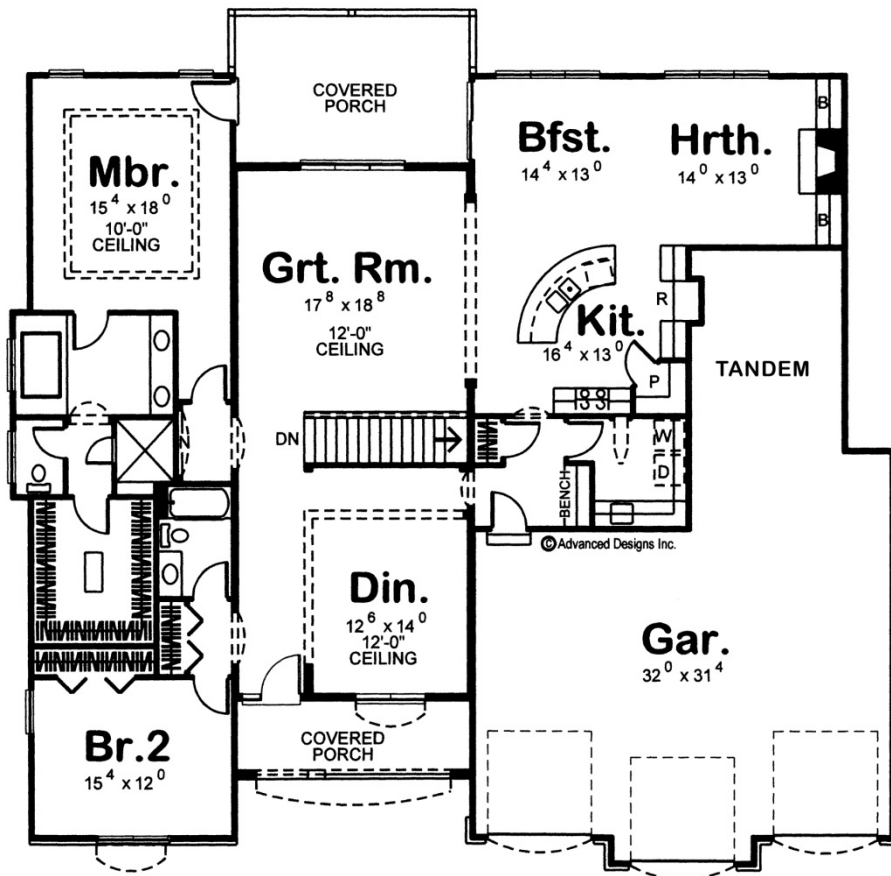




**29148 - Jameson Data Sheet**

2478 SQ FT	2 BEDS	2 BATHS	3 BAYS	68' 0" WIDE	66' 0" DEEP
---------------	-----------	------------	-----------	----------------	----------------



**Construction Specs**

Layout

Bedrooms

Bathrooms	2
Garage Bays	3

### Square Footage

Main Level	2478 Sq. Ft.
Garage	1020 Sq. Ft.
Total Finished Area	2478 Sq. Ft.

### Exterior Dimensions

Width	68' 0"
Depth	66' 0"
Ridge Height <i>Calculated from main floor line</i>	24'

### Default Construction Stats

*Stats are unique to the individual plan.*

Foundation Type	Basement
Exterior Wall Construction	2x4
Roof Pitches	6/12
Foundation Wall Height	9'
Main Wall Height	9'

## Plan Description

Jameson is a beautiful Mediterranean 1 story house plan, finely detailed living spaces, and plenty of room even for entertaining. Featuring an impressive open floor plan, large sit around island in the kitchen and a cozy hearth room nestled away behind the breakfast area. The impressive master suite is another great feature of this 1 story house plan with its tile shower, whirlpool tub and large walk-in closet. The garage is every man's man cave with the 3 car garage and plenty of room for storage or an extra car or man cave in the rear.