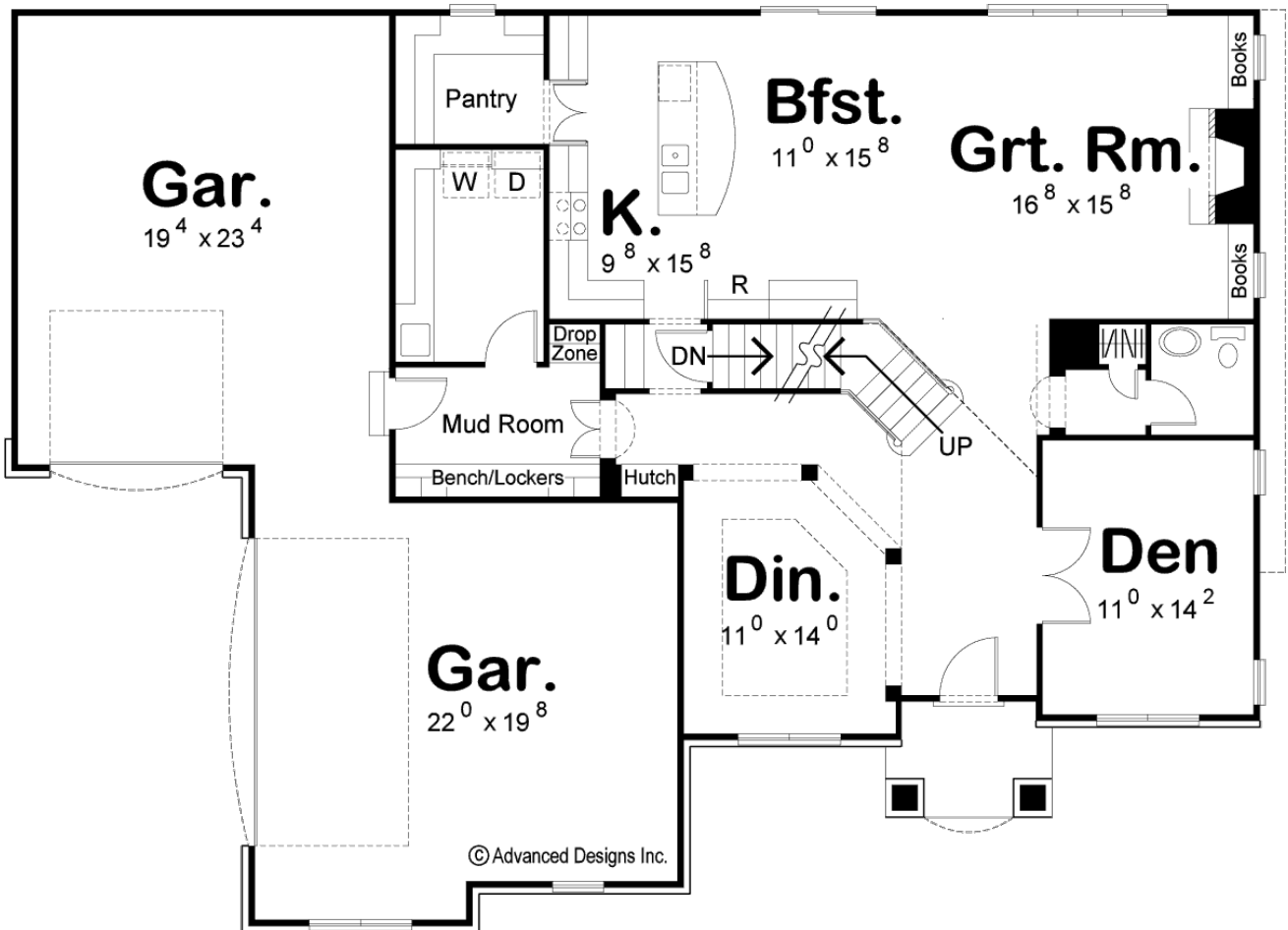
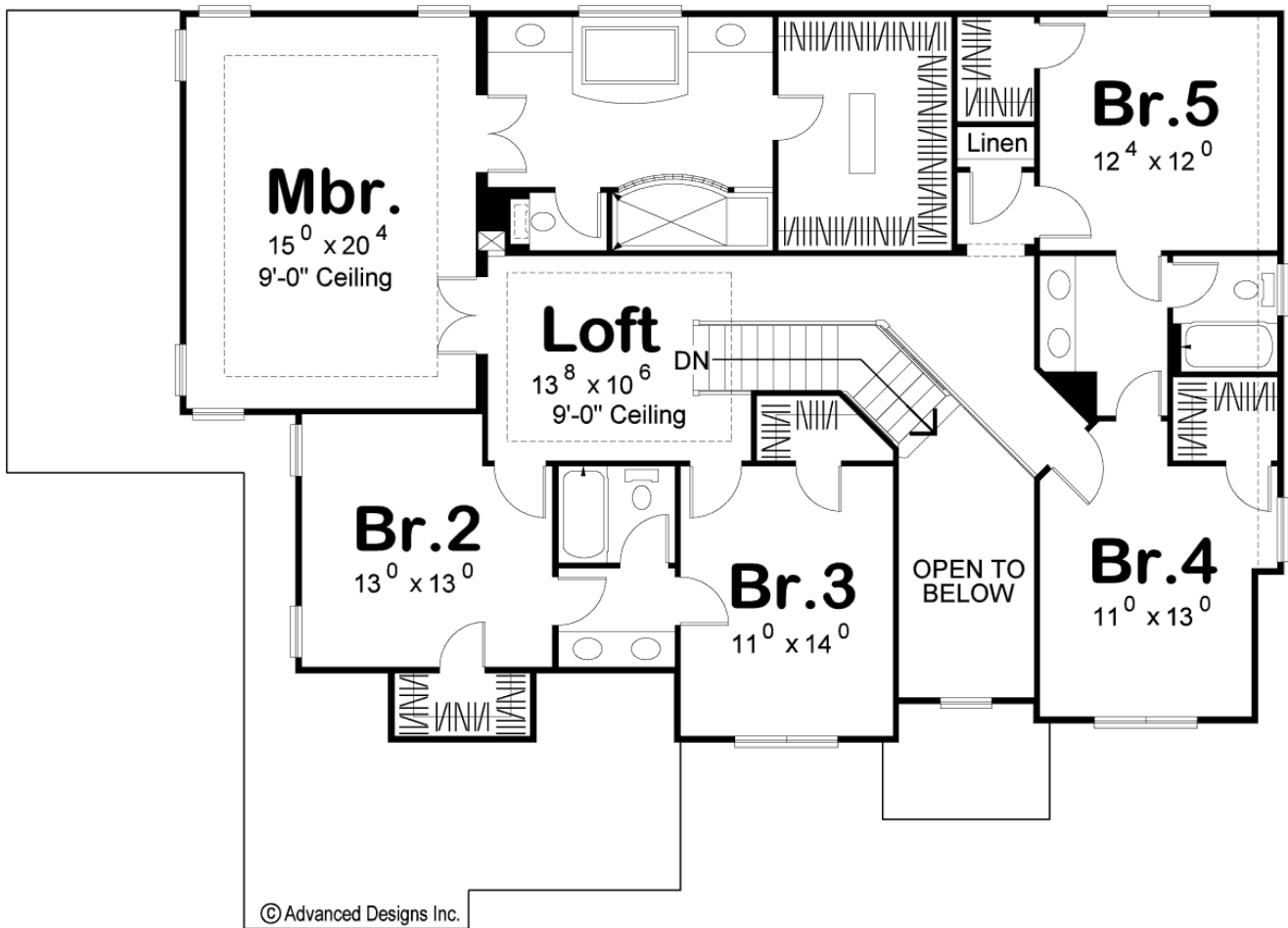




**29038 - Holbrook Data Sheet**

3493 SQ FT	5 BEDS	4 BATHS	3 BAYS	65' 0" WIDE	48' 0" DEEP
---------------	-----------	------------	-----------	----------------	----------------





## Construction Specs

### Layout

Bedrooms	5
Bathrooms	4
Garage Bays	3

### Square Footage

Main Level	1497 Sq. Ft.
Second Level	1996 Sq. Ft.
Garage	919 Sq. Ft.
Total Finished Area	3493 Sq. Ft.

### Exterior Dimensions

Width	65' 0"
Depth	48' 0"
Ridge Height	33'
<i>Calculated from main floor line</i>	

## Default Construction Stats

*Stats are unique to the individual plan.*

Foundation Type	Basement
Exterior Wall Construction	2x4
Roof Pitches	12/12 Primary, 8/12 Secondary
Foundation Wall Height	9'
Main Wall Height	9'
Second Wall Height	9'

## Plan Description

Brick and lap siding are beautifully balanced beneath a quartet of gables on this 3,493 sq. ft., Traditional-style, 2-story house plan. A covered stoop invites guests inside, where the 2-story-high entry hall grants immediate views into the open formal dining room, whose boundaries are defined by ceiling details and elegant columns. Across from the dining room, double doors open into the den, with views to the front and side. Farther inside, guests are received in the great room, with its warming fireplace, flanked by built-in bookshelves, as well as generous views to the rear. The great room flows seamlessly into the breakfast area and kitchen, which boasts ample counter space, an island workstation, and a large walk-in pantry. Just off the kitchen, a mud room featuring the convenience of a built-in drop zone along with bench and lockers intercepts traffic from the home's 3-car garage. The 919 sq. ft. garage includes a front-load 1-car garage and a side-load 2-car garage. Just off the mud room, a laundry room stands ready to serve with a soaking sink and generous counter space. A trip up the home's staircase ends at a loft area with a 9-foot-high ceiling. From the loft, double doors open into the master suite. The master bath includes his and her vanities that flank a soaking tub, a walk-in glass block shower, compartmented toilet and large walk-in closet. Each of the four secondary bedrooms have walk-in closets. Bedrooms 2 and 3 share a Jack-n-Jill bath, as do bedrooms 4 and 5.