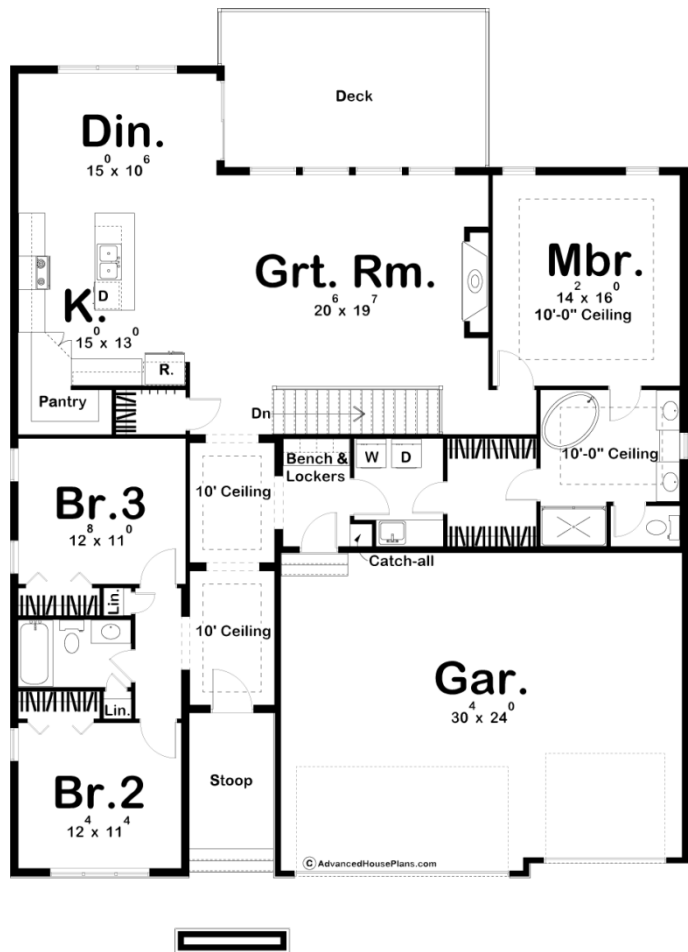




29388 - Hinshaw Data Sheet

| | | | | | |
|---------------|-----------|------------|-----------|----------------|----------------|
| 2011 SQ FT | 3 BEDS | 2 BATHS | 3 BAYS | 51' 0" WIDE | 71' 0" DEEP |
|---------------|-----------|------------|-----------|----------------|----------------|



Construction Specs

Layout

Bedrooms

| | |
|--|------------------------------|
| Bathrooms | 2 |
| Garage Bays | 3 |
| Square Footage | |
| Main Level | 2011 Sq. Ft. |
| Garage | 739 Sq. Ft. |
| Total Finished Area | 2011 Sq. Ft. |
| Exterior Dimensions | |
| Width | 51' 0" |
| Depth | 71' 0" |
| Ridge Height <i>Calculated from main floor line</i> | 20' |
| Default Construction Stats <i>Stats are unique to the individual plan.</i> | |
| Foundation Type | Basement |
| Exterior Wall Construction | 2x4 |
| Roof Pitches | 5/12 primary, 4/12 secondary |
| Foundation Wall Height | 9' |
| Main Wall Height | 9' |

Plan Description

A duet of slopes at the roofline enhances the retro-contemporary styling of this Modern Mountain 3-bedroom, one-story house plan. The deeply recessed entry hall enjoys high, sculptured ceilings, and leads to an open arrangement of the kitchen, dining area, and great room, with expansive views to the outside. The master suite is separated from the main living areas for privacy but can be accessed from two separate entry points for practicality. Bedrooms 2 and 3 also enjoy privacy from the rest of the home, as they are accessed just off the entry hall. The 3-car garage is accessed through a sensible mud room with bench, lockers and handy catch-all cove.