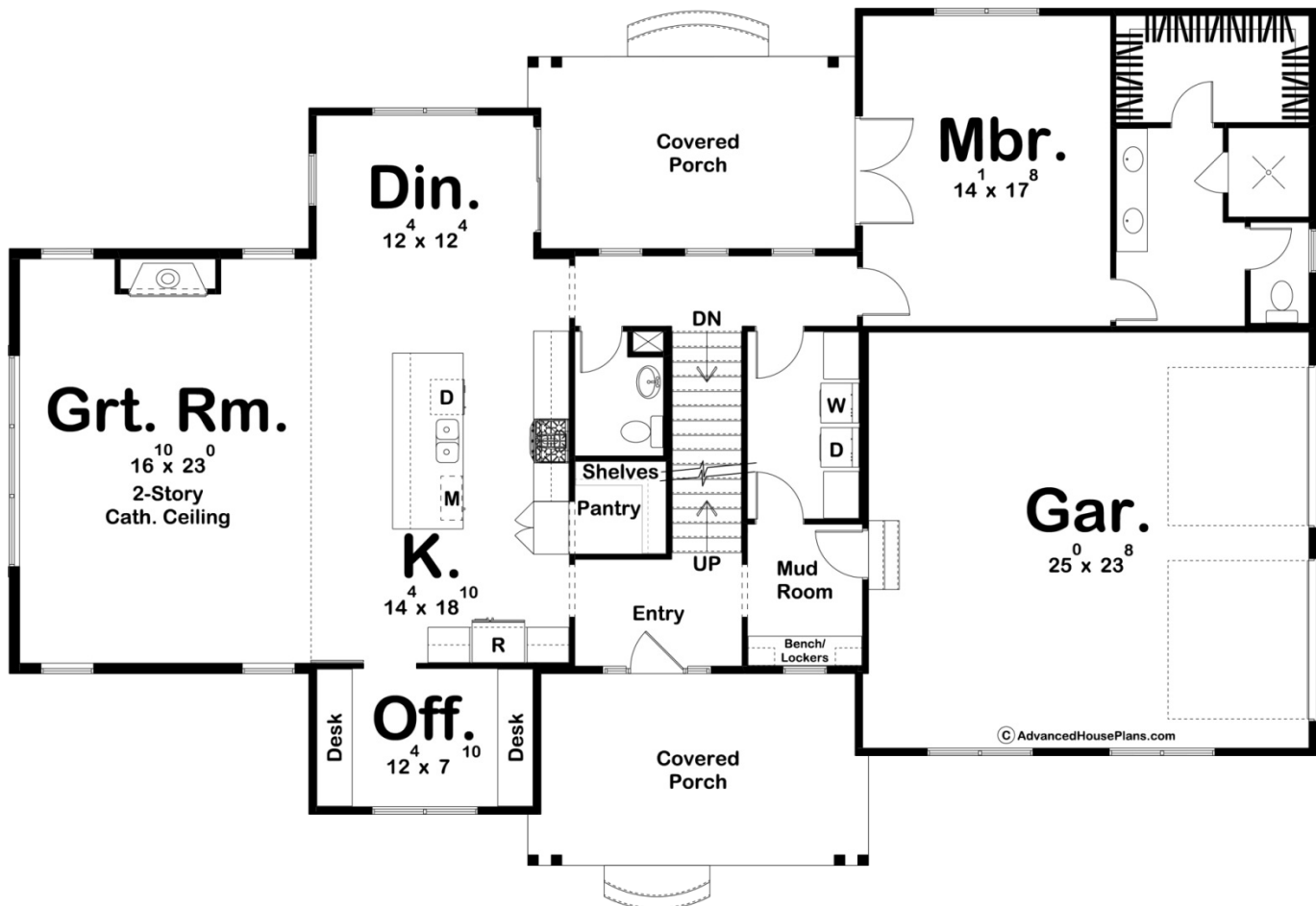
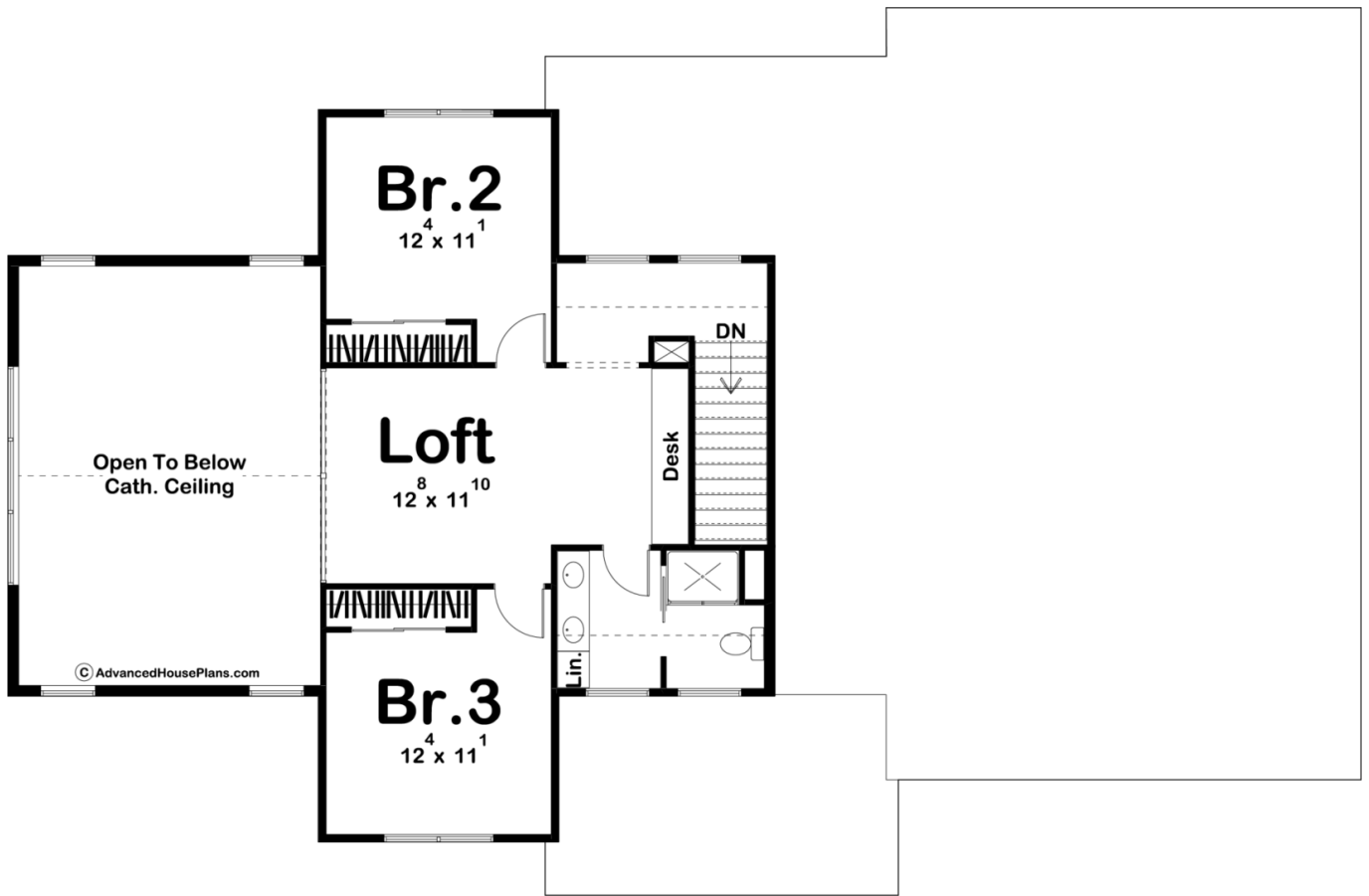




30118 - Hay Springs Data Sheet

2637 SQ FT	3 BEDS	3 BATHS	2 BAYS	74' 0" WIDE	48' 8" DEEP
---------------	-----------	------------	-----------	----------------	----------------





Construction Specs

Layout

Bedrooms	3
Bathrooms	3
Garage Bays	2

Square Footage

Main Level	1850 Sq. Ft.
Second Level	787 Sq. Ft.
Covered Area	404 Sq. Ft.
Garage	611 Sq. Ft.
Total Finished Area	2637 Sq. Ft.

Exterior Dimensions

Width	74' 0"
Depth	48' 8"
Ridge Height	28' 0"
<i>Calculated from main floor line</i>	

Default Construction Stats

Stats are unique to the individual plan.

Foundation Type	Basement
Exterior Wall Construction	2x4
Roof Pitches	10/12 Primary
Foundation Wall Height	9'
Main Wall Height	9'
Second Wall Height	8'

Plan Description

The Hay Springs plan is a beautiful Modern Farmhouse that is loaded with amazing features. The exterior will blow everyone away with its contrasting siding, large windows, metal roof, and large front covered porch. The exterior is amazing... but the interior is even better. Just inside the home, guests are greeted by a wide open floor plan. The kitchen includes a large working island and a walk-in pantry with built in shelves. The great room lies under a soaring 2 story cathedral ceiling and is warmed by a stunning fireplace. The dining room leads to a large rear covered porch through a sliding glass door. Just off the kitchen a practical home office can be found with built-in desks. Tucked away on the rear of the home for maximum privacy is the master suite. The master bathroom includes his/her vanities, a walk-in shower, an enclosed toilet area, and a large walk-in closet. A set of French doors lead from the master bedroom to the rear covered porch. The second floor features 2 additional bedrooms. A loft area with a built-in desk shares a centrally located bathroom with the upstairs bedrooms. Back on the main floor, the homes 2 car side load garage accesses the home through a convenient mudroom that features a bench and lockers.