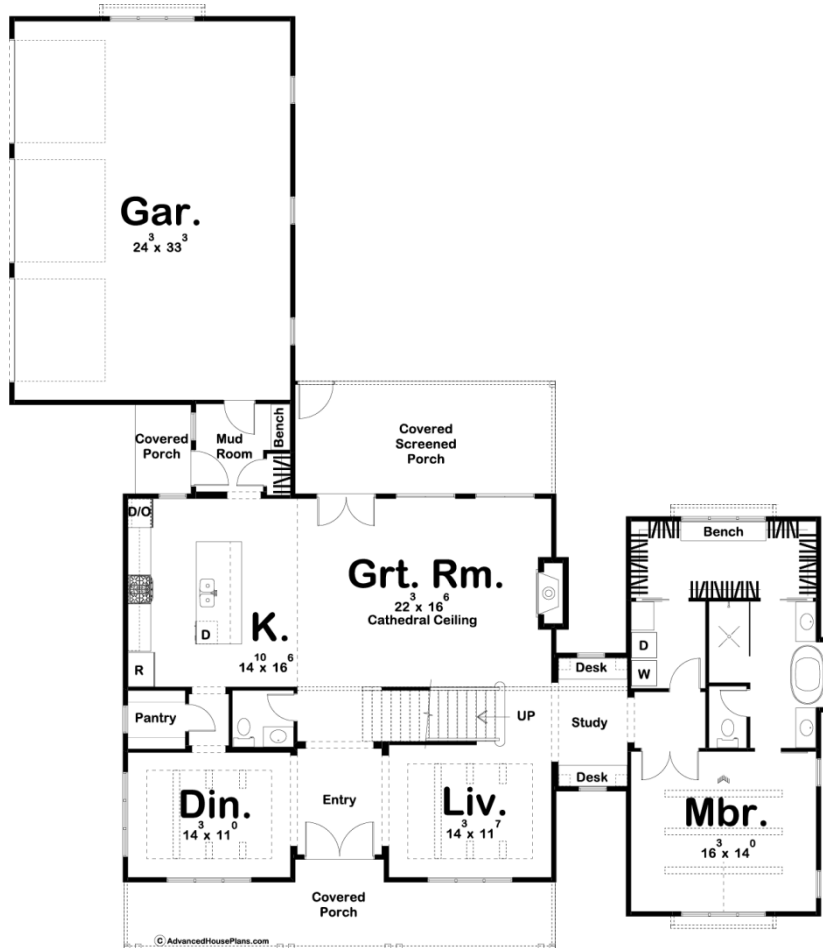
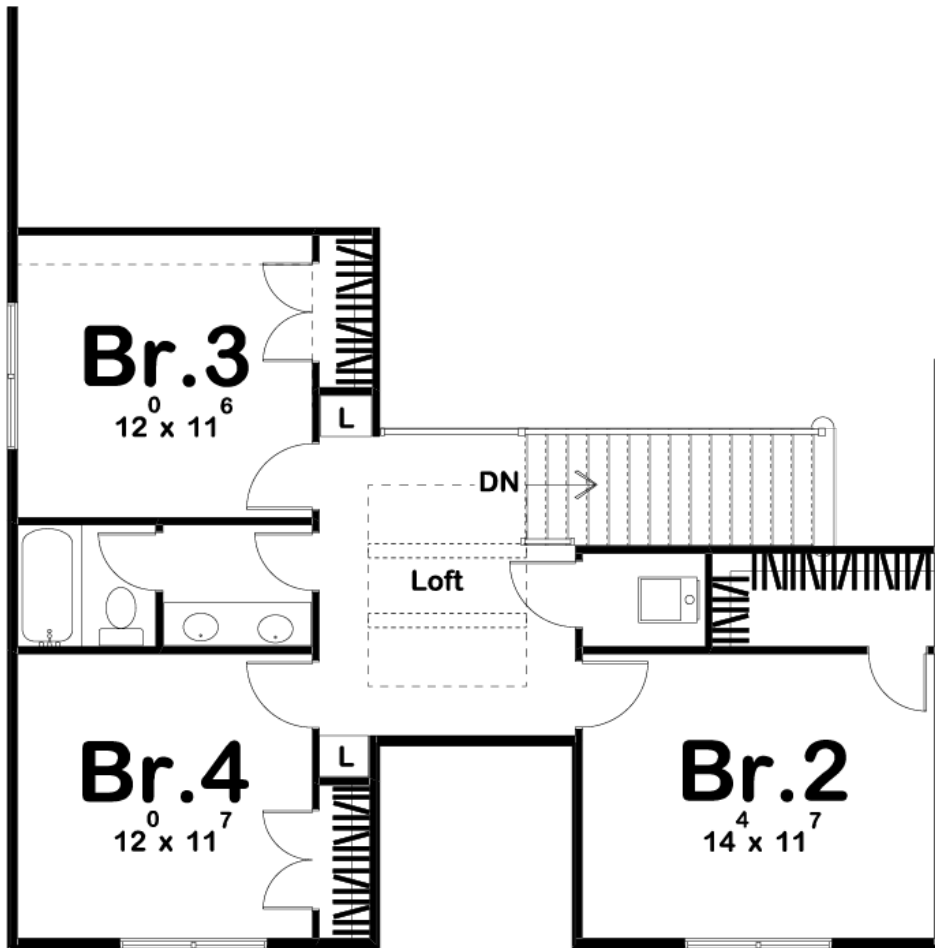




**29604 - Harmdierks Data Sheet**

2793 SQ FT	4 BEDS	3 BATHS	3 BAYS	72' 0" WIDE	82' 0" DEEP
---------------	-----------	------------	-----------	----------------	----------------





## Construction Specs

Layout	
Bedrooms	4
Bathrooms	3
Garage Bays	3
Square Footage	
Main Level	2035 Sq. Ft.
Second Level	758 Sq. Ft.
Garage	847 Sq. Ft.
Total Finished Area	2793 Sq. Ft.
Exterior Dimensions	
Width	72' 0"
Depth	82' 0"
Default Construction Stats	
<i>Stats are unique to the individual plan.</i>	
Foundation Type	Basement

Exterior Wall Construction	2x4
Roof Pitches	10/12 Primary, 4/12 Secondary
Foundation Wall Height	9'
Main Wall Height	9'
Second Wall Height	8'

## Plan Description

This 1.5 story, modern farmhouse plan boasts a unique layout. Inside, the entry way leads to both the dining room and living room both with wood-beamed ceilings. An open kitchen and great room with cathedral ceilings provide a great space for entertaining guests. The entertainment options continue outside with a large covered screened porch off of the rear. A study separates the 1st floors master suite from the rest of the living areas. The master suite features a massive walk-in closet with a built in bench and window, his and her vanities in the bath, and direct access to the laundry room. The suite features a cathedral ceiling with beautiful wood beams. Upstairs, bedroom 2, 3 and 4 share a centrally located bathroom. Back on the main level, the generously proportioned 3-car garage includes ample space for a workshop. It accesses the home through a mudroom, complete with bench, lockers and a coat closet.