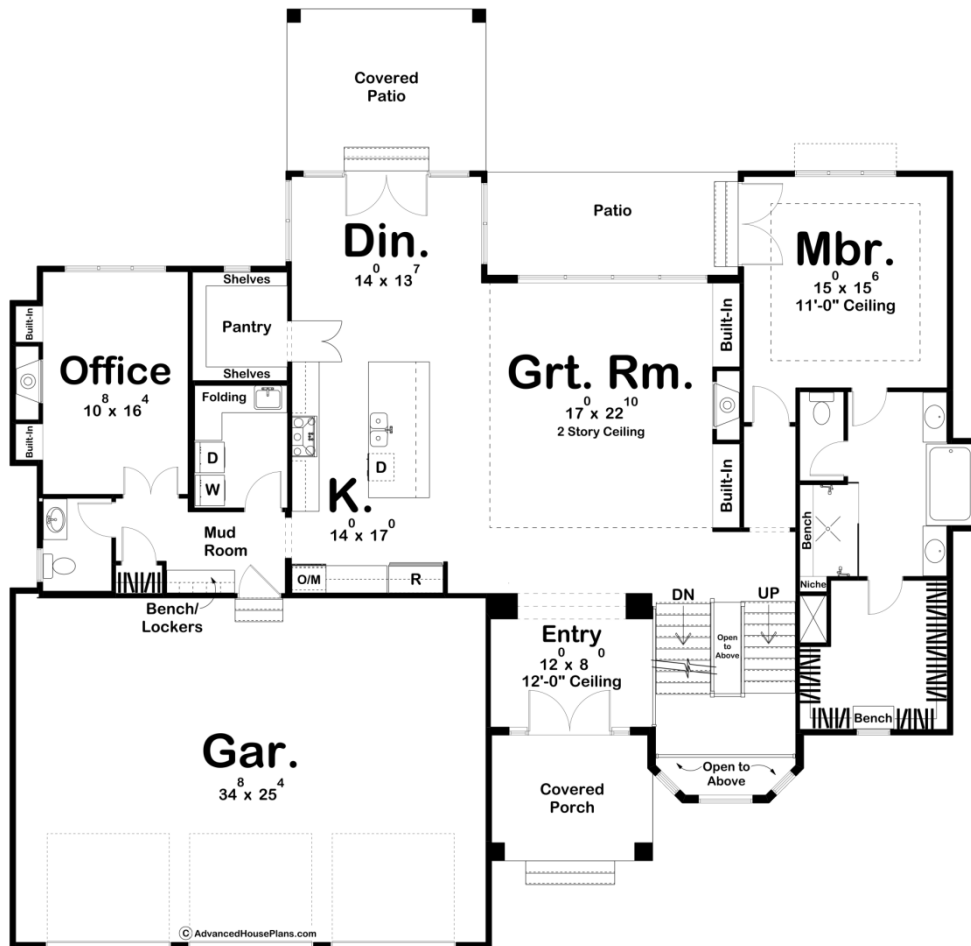
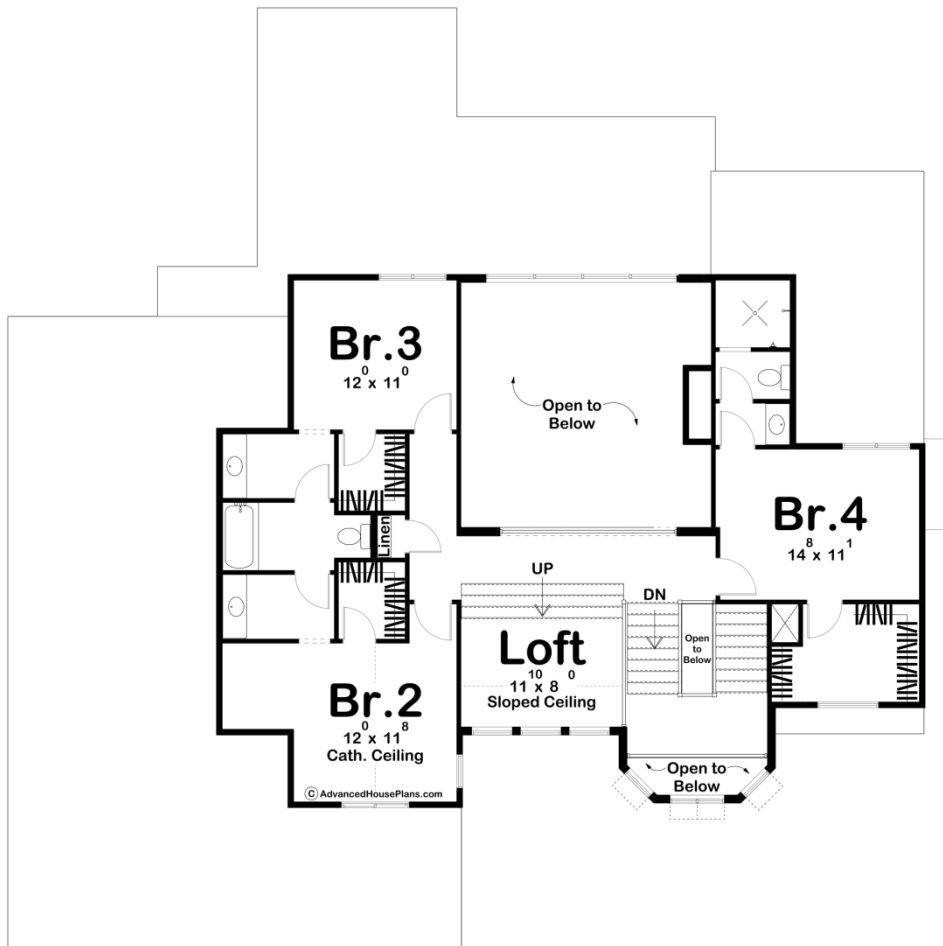




**30100 - Griffith Creek Data Sheet**

|               |           |            |           |                |                |
|---------------|-----------|------------|-----------|----------------|----------------|
| 3370<br>SQ FT | 4<br>BEDS | 4<br>BATHS | 3<br>BAYS | 71' 4"<br>WIDE | 69' 0"<br>DEEP |
|---------------|-----------|------------|-----------|----------------|----------------|





Construction Specs

## Layout

|             |   |
|-------------|---|
| Bedrooms    | 4 |
| Bathrooms   | 4 |
| Garage Bays | 3 |

## Square Footage

|                     |              |
|---------------------|--------------|
| Main Level          | 2230 Sq. Ft. |
| Second Level        | 1140 Sq. Ft. |
| Garage              | 908 Sq. Ft.  |
| Total Finished Area | 3370 Sq. Ft. |

## Exterior Dimensions

|       |        |
|-------|--------|
| Width | 71' 4" |
| Depth | 69' 0" |

## Default Construction Stats

*Stats are unique to the individual plan.*

|                            |                              |
|----------------------------|------------------------------|
| Foundation Type            | Basement                     |
| Exterior Wall Construction | 2x4                          |
| Roof Pitches               | 8/12 Primary, 4/12 Secondary |
| Foundation Wall Height     | 9'                           |
| Main Wall Height           | 10'                          |
| Second Wall Height         | 8'                           |

## Plan Description

Shake siding with European accents give this family-friendly 1.5-story house plan a beautiful modern cottage look. Grand impressions are made on the inside, beneath the great room's 2-story-high ceiling. The great room, with views to the rear through a covered patio, is warmed by a beautiful fireplace that is flanked by built-in bookshelves. The kitchen, open to the dining area, boasts generous counter space, a work island, and walk-in pantry. The home's 3-car garage is accessed from the kitchen through a mudroom/utility area, complete with laundry, powder bath, and bench/lockers. A home office is tucked away on the left side of the home. The master suite rests quietly away from the hustle and bustle of the main-floor living areas. Its bath is well appointed with his and her vanities, compartmented toilet, spacious shower and roomy walk-in closet with built-in dressing seat. Upstairs, the three secondary bedrooms enjoy their own privacy. Bedrooms 3 and 4 each include a walk-in closet. Bedrooms 2 and 3 share a Jack-n- Jill bath with compartmented toilet and tub. Bedroom 4 benefits from access to its own bath. Additional intriguing points of this house plan include views from the second-story loft to the great room, as well as open views above and below from the U-shaped stairway. An optional finished basement adds 1526 sq ft to the house and includes 2 additional bedrooms, a wet bar, a game room, a living room, and ample storage.