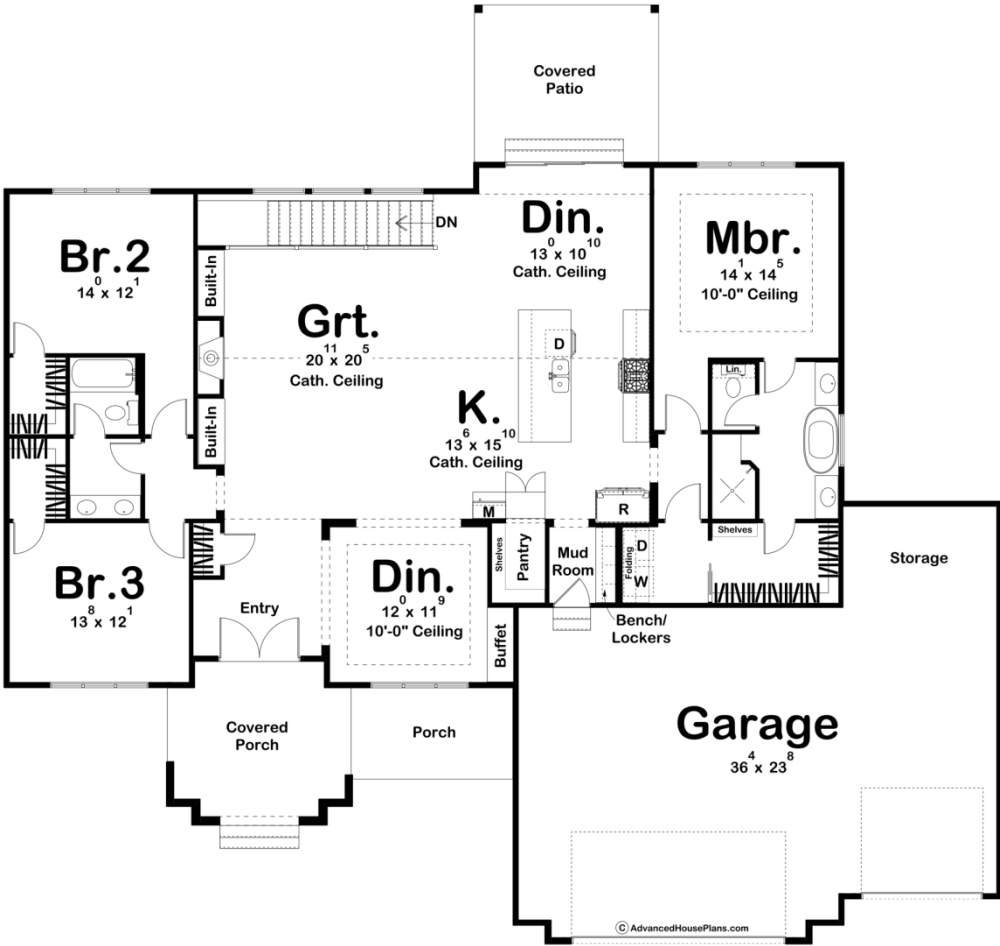




30252 - Green River Data Sheet

2286 SQ FT	3 BEDS	2 BATHS	3 BAYS	75' 8" WIDE	71' 0" DEEP
---------------	-----------	------------	-----------	----------------	----------------



Construction Specs

Layout

Bedrooms

Bathrooms	2
Garage Bays	3
Square Footage	
Main Level	2286 Sq. Ft.
Covered Area	414 Sq. Ft.
Garage	985 Sq. Ft.
Total Finished Area	2286 Sq. Ft.
Exterior Dimensions	
Width	75' 8"
Depth	71' 0"
Default Construction Stats <i>Stats are unique to the individual plan.</i>	
Foundation Type	Basement
Exterior Wall Construction	2x4
Roof Pitches	Primary 8/12, Secondary 10/12, 4/12
Main Wall Height	9'

Plan Description

The Green River plan is a simple Modern Farmhouse with board & batten siding and a pop of thinset brick. Entering from the garage, there is a mudroom with bench & lockers. Stepping in further, you will find the large kitchen with an oversized island. This plan includes a formal dining space and a dinette. The great room has a cathedral ceiling and a built in fireplace with cabinets beside it. There are three bedrooms on the main floor. Two of them share a hall bath. The master bedroom has it's own bath that connects the walk-in closet to the laundry room. The optional finished basement provides an extra 1549 square feet of finished space and 559 square feet of storage. The basement opens up into a large family room with a fireplace. There is an exercise room along with a wet bar. The finished basement also provides two additional bedrooms and a bath. This plan could easily be turned into a slab or crawlspace foundation by removing the stairs and having a larger great room.