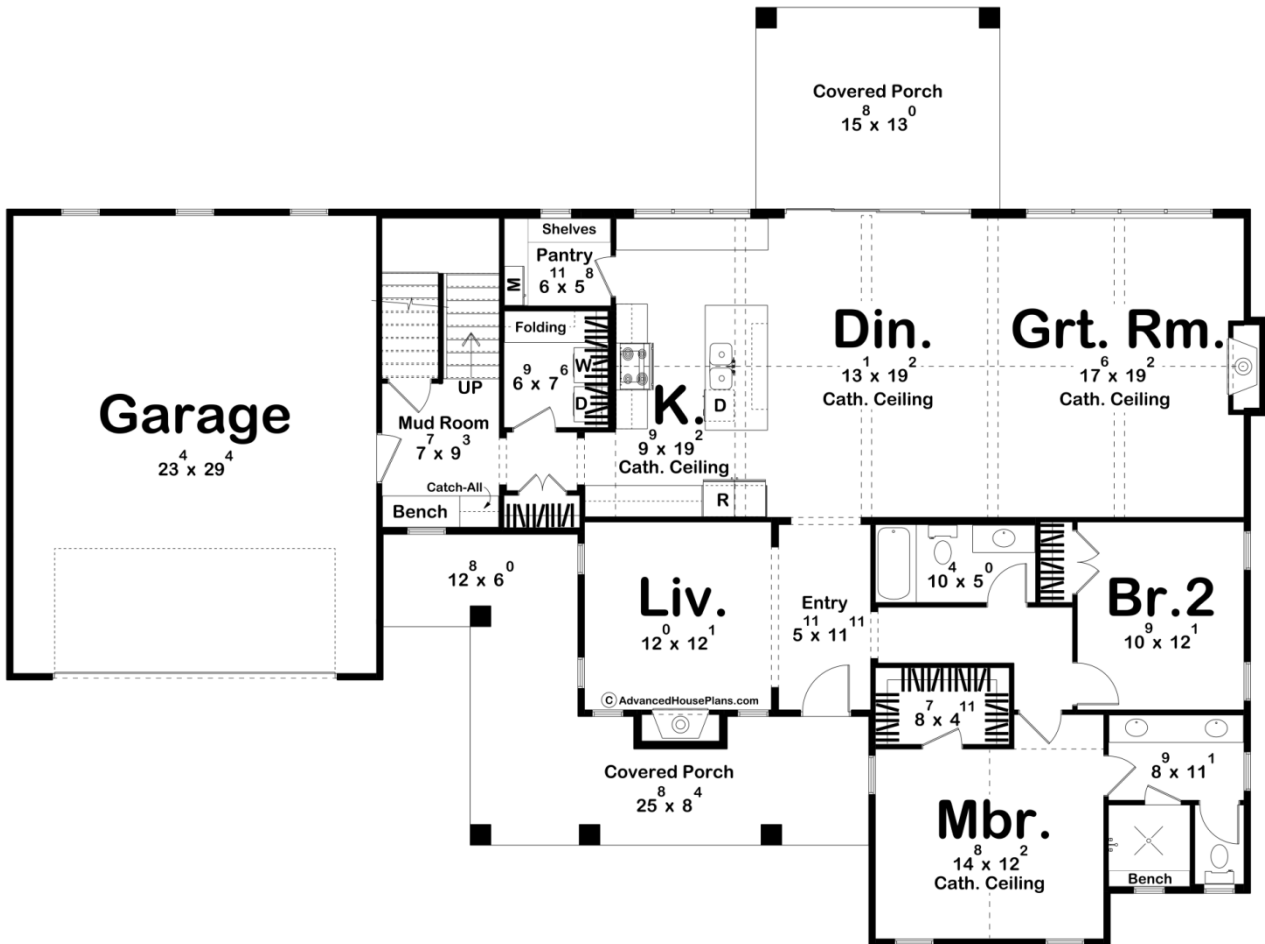
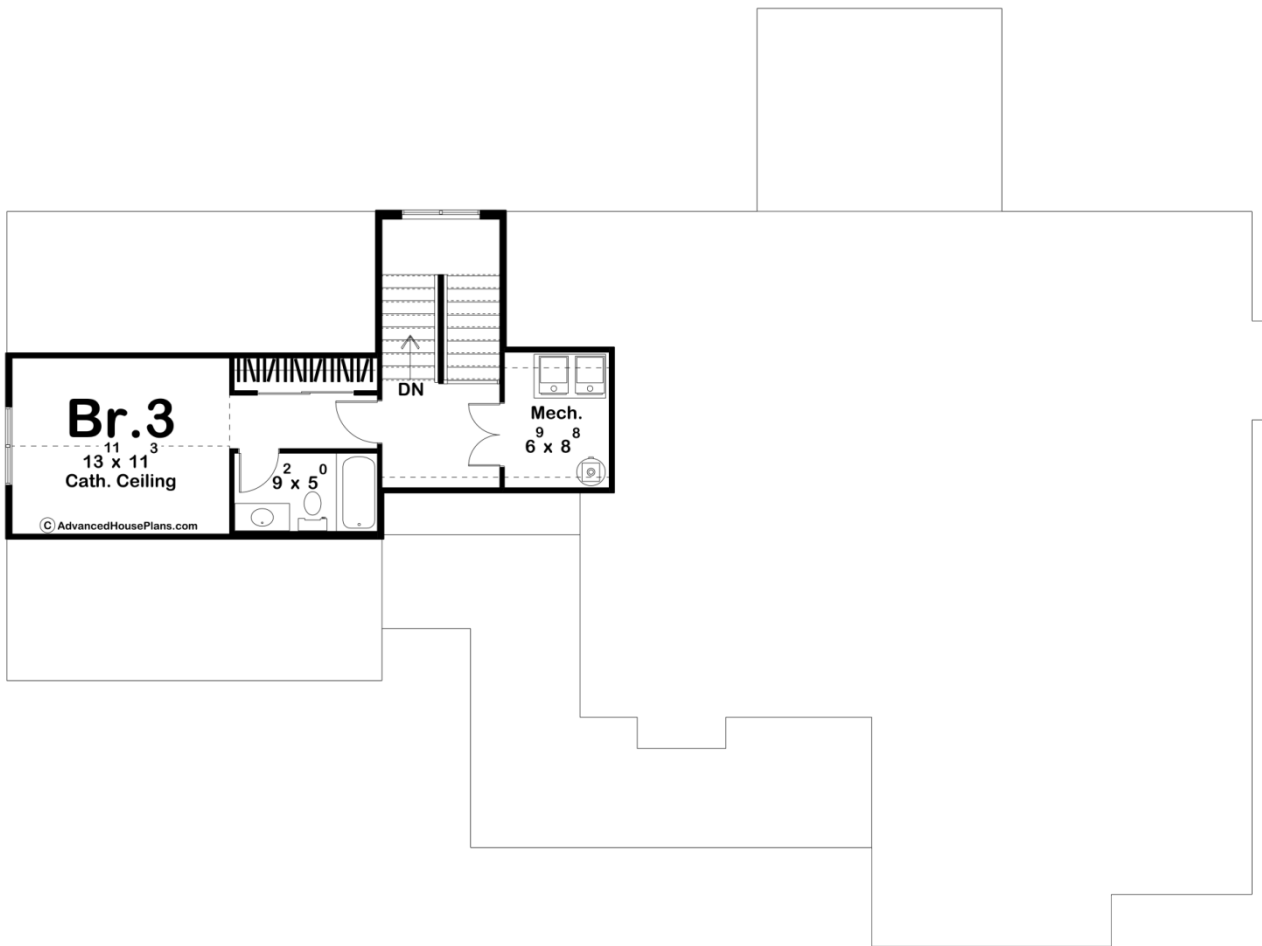




**30541 - Gerald Creek Data Sheet**

2354 SQ FT	3 BEDS	3 BATHS	2 BAYS	80' 8" WIDE	60' 0" DEEP
---------------	-----------	------------	-----------	----------------	----------------





## Construction Specs

### Layout

Bedrooms	3
Bathrooms	3
Garage Bays	2

### Square Footage

Main Level	1993 Sq. Ft.
Second Level	361 Sq. Ft.
Covered Area	533 Sq. Ft.
Garage	712 Sq. Ft.
Total Finished Area	2354 Sq. Ft.

### Exterior Dimensions

Width	80' 8"
Depth	60' 0"

### Default Construction Stats

*Stats are unique to the individual plan.*

Foundation Type	Slab
Exterior Wall Construction	2x4
Roof Pitches	Primary 12/12, Secondary 4/12, 3/12
Main Wall Height	10'
Second Wall Height	8'

## Plan Description

This elegant 1.5-story home features a classic traditional exterior, characterized by its timeless stone and siding combination. The facade is complemented by a spacious two-car garage at the front and a large covered front porch perfect for relaxing or entertaining. Inside, the open floor plan seamlessly integrates the kitchen, dining area, and great room, all beneath soaring cathedral ceilings adorned with rustic wood beams. This expansive space is ideal for both family gatherings and quiet evenings by the fireplace. In addition to the main living area, there is a cozy additional living room, providing extra space for relaxation or entertainment. The main floor features two comfortable bedrooms, offering convenience and accessibility. The second floor hosts an additional bedroom, providing a private retreat or guest accommodation. This house combines traditional style with modern comfort, making it an ideal choice for families seeking a harmonious blend of elegance and practicality.