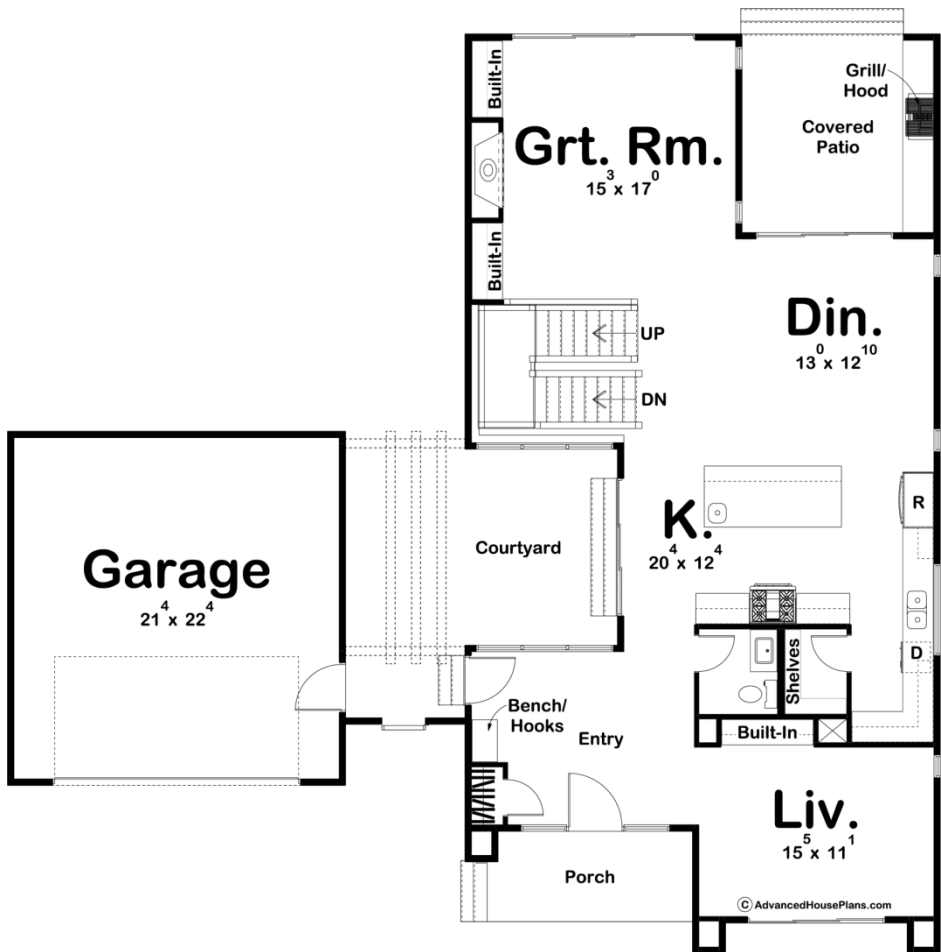
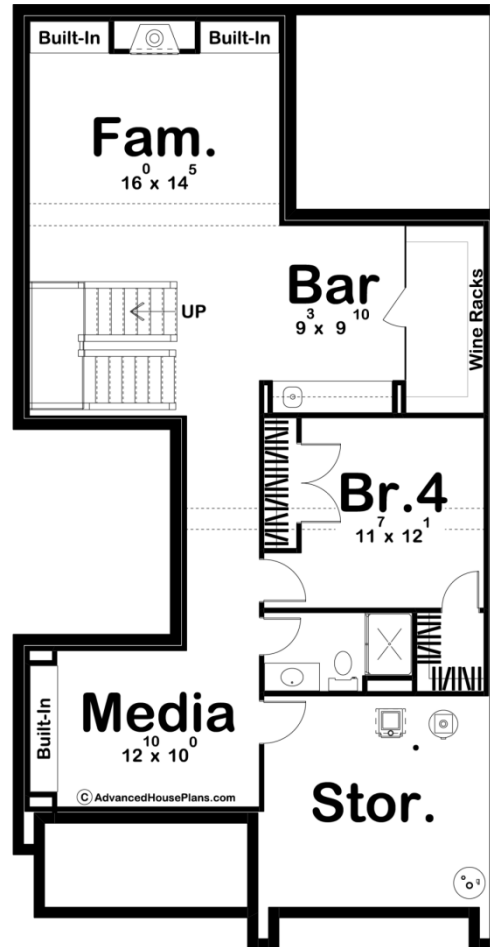
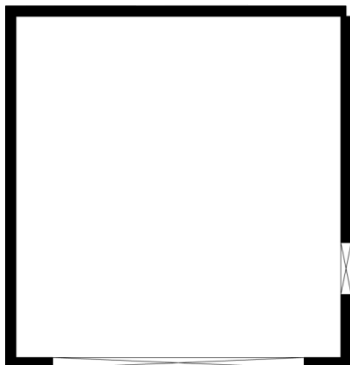
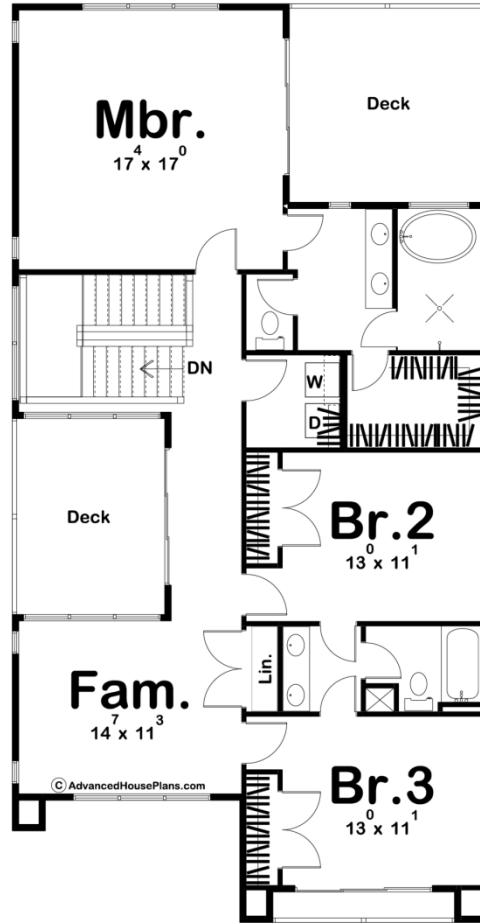
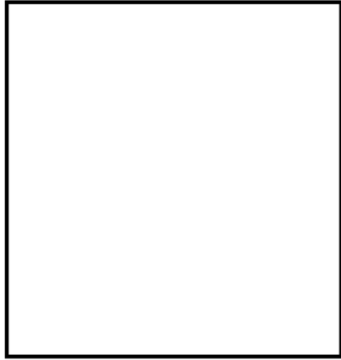




29848 - Fresno Data Sheet

| | | | | | |
|---------------|-----------|------------|-----------|----------------|----------------|
| 2723 SQ FT | 3 BEDS | 3 BATHS | 2 BAYS | 61' 0" WIDE | 60' 0" DEEP |
|---------------|-----------|------------|-----------|----------------|----------------|





Layout

| | |
|-------------|---|
| Bedrooms | 3 |
| Bathrooms | 3 |
| Garage Bays | 2 |

Square Footage

| | |
|---------------------|--------------|
| Main Level | 1409 Sq. Ft. |
| Second Level | 1314 Sq. Ft. |
| Garage | 506 Sq. Ft. |
| Total Finished Area | 2723 Sq. Ft. |

Exterior Dimensions

| | |
|-------|--------|
| Width | 61' 0" |
| Depth | 60' 0" |

Default Construction Stats

Stats are unique to the individual plan.

| | |
|----------------------------|----------|
| Foundation Type | Basement |
| Exterior Wall Construction | 2x4 |
| Roof Pitches | Flat |
| Foundation Wall Height | 9' |
| Main Wall Height | 9' |
| Second Wall Height | 8' |

Plan Description

The Fresno plan is a gorgeous modern style 2 story home. The exterior blends white stucco with metal and wood accents to give this home excellent curb appeal. Just inside the entry is a living room with a built-in entertainment center that accesses the front of the home through a large sliding glass door. The home's large kitchen includes an island with a snack bar and a walk-in pantry. An amazing courtyard can be accessed from the kitchen through sliding glass doors. The home's great room is warmed by a fireplace that is flanked by built-in bookshelves. The large dining room accesses the covered patio through sliding glass doors. The covered patio elevates your outdoor entertainment with an outdoor grill. The second floor is where you'll find the home's bedrooms. The master suite includes his/her vanities, a large walk-in closet, and access to a private deck. Bedrooms 2 and 3 share a jack and jill bathroom. Back on the main level, the home's 2 car garage accesses the home through a breezeway. An optional finished basement adds 981 sq ft to the plan and includes an additional family room with a fireplace, a bar, a wine room, an additional bedroom, and a media room.